


Product datasheet

Anti-Lipoamide Dehydrogenase antibody ab152105

4 Images

Overview

Product name	Anti-Lipoamide Dehydrogenase antibody
Description	Rabbit polyclonal to Lipoamide Dehydrogenase
Host species	Rabbit
Tested applications	Suitable for: WB, IHC-P, ICC/IF
Species reactivity	Reacts with: Mouse, Human Predicted to work with: Rat, Chicken, Cow, Dog, Pig, Xenopus laevis 
Immunogen	Recombinant fragment corresponding to a region within amino acids 264-469 of Human DLD (Uniprot: P09622).
Positive control	293T and Mmouse brain whole cell lysate, Hep3B cells, Human Gastric CA tissue
General notes	<p>Reproducibility is key to advancing scientific discovery and accelerating scientists' next breakthrough.</p> <p>Abcam is leading the way with our range of recombinant antibodies, knockout-validated antibodies and knockout cell lines, all of which support improved reproducibility.</p> <p>We are also planning to innovate the way in which we present recommended applications and species on our product datasheets, so that only applications & species that have been tested in our own labs, our suppliers or by selected trusted collaborators are covered by our Abpromise™ guarantee.</p> <p>In preparation for this, we have started to update the applications & species that this product is Abpromise guaranteed for.</p> <p>We are also updating the applications & species that this product has been “predicted to work with,” however this information is not covered by our Abpromise guarantee.</p> <p>Applications & species from publications and Abreviews that have not been tested in our own labs or in those of our suppliers are not covered by the Abpromise guarantee.</p> <p>Please check that this product meets your needs before purchasing. If you have any questions, special requirements or concerns, please send us an inquiry and/or contact our Support team ahead of purchase. Recommended alternatives for this product can be found below, as well as customer reviews and Q&As.</p>

Properties

Form	Liquid
-------------	--------

Storage instructions	Shipped at 4°C. Upon delivery aliquot. Store at -20°C or -80°C. Avoid freeze / thaw cycle.
Storage buffer	pH: 7.00 Preservative: 0.01% Thimerosal (merthiolate) Constituents: 79.99% PBS, 20% Glycerol (glycerin, glycerine)
Purity	Protein A purified
Clonality	Polyclonal
Isotype	IgG

Applications

Our [Abpromise guarantee](#) covers the use of **ab152105** in the following tested applications.

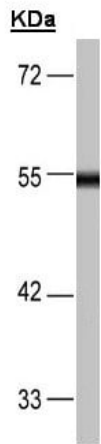
The application notes include recommended starting dilutions; optimal dilutions/concentrations should be determined by the end user.

Application	Abreviews	Notes
WB		1/500 - 1/3000. Predicted molecular weight: 54 kDa.
IHC-P		1/100 - 1/1000. Perform heat mediated antigen retrieval with citrate buffer pH 6 before commencing with IHC staining protocol. Or perform heat mediated antigen retrieval with Tris-EDTA buffer pH 8.
ICC/IF		1/100 - 1/1000.

Target

Function	Lipoamide dehydrogenase is a component of the glycine cleavage system as well as of the alpha-ketoacid dehydrogenase complexes. Involved in the hyperactivation of spermatazoa during capacitation and in the spermatazoal acrosome reaction.
Involvement in disease	Note=Defects in DLD are involved in the development of congenital infantile lactic acidosis. Defects in DLD are a cause of maple syrup urine disease (MSUD) [MIM:248600]. MSUD is characterized by mental and physical retardation, feeding problems and a maple syrup odor to the urine. The keto acids of the branched-chain amino acids are present in the urine, resulting from a block in oxidative decarboxylation.
Sequence similarities	Belongs to the class-I pyridine nucleotide-disulfide oxidoreductase family.
Post-translational modifications	Tyrosine phosphorylated.
Cellular localization	Mitochondrion matrix.

Images

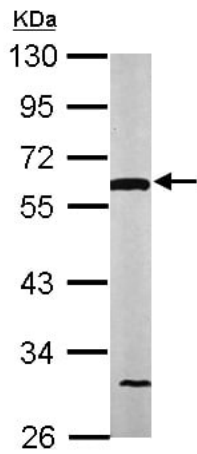


Western blot - Anti-Lipoamide Dehydrogenase antibody (ab152105)

Anti-Lipoamide Dehydrogenase antibody (ab152105) at 1/1000 dilution + 293T whole cell lysate at 30 µg

Predicted band size: 54 kDa

10% SDS PAGE

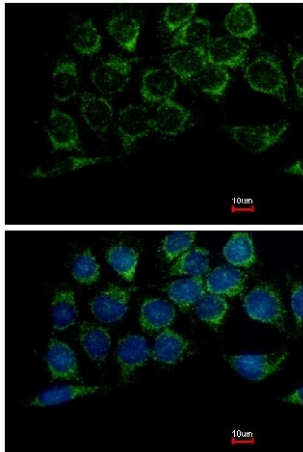


Western blot - Anti-Lipoamide Dehydrogenase antibody (ab152105)

Anti-Lipoamide Dehydrogenase antibody (ab152105) at 1/1000 dilution + Mouse brain whole cell lysate at 50 µg

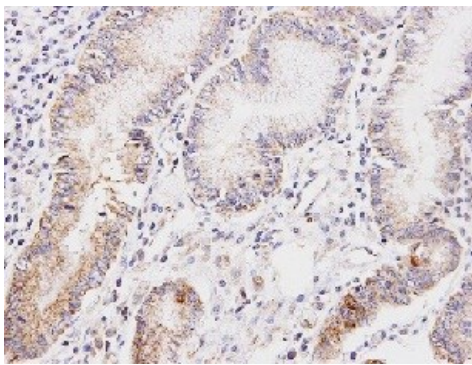
Predicted band size: 54 kDa

10% SDS PAGE



Immunofluorescence analysis of methanol-fixed Hep3B cells labeling Lipoamide Dehydrogenase using ab152105 at a 1/100 dilution. Bottom image is costained with hoechst 33342.

Immunocytochemistry/ Immunofluorescence - Anti-Lipoamide Dehydrogenase antibody (ab152105)



Immunohistochemical analysis of paraffin-embedded Human gastric CA tissue labeling Lipoamide Dehydrogenase using ab152105 at a 1/100 dilution.

Immunohistochemistry (Formalin/PFA-fixed paraffin-embedded sections) - Anti-Lipoamide Dehydrogenase antibody (ab152105)

Please note: All products are "FOR RESEARCH USE ONLY. NOT FOR USE IN DIAGNOSTIC PROCEDURES"

Our Abpromise to you: Quality guaranteed and expert technical support

- Replacement or refund for products not performing as stated on the datasheet
- Valid for 12 months from date of delivery

- Response to your inquiry within 24 hours
- We provide support in Chinese, English, French, German, Japanese and Spanish
- Extensive multi-media technical resources to help you
- We investigate all quality concerns to ensure our products perform to the highest standards

If the product does not perform as described on this datasheet, we will offer a refund or replacement. For full details of the Abpromise, please visit <https://www.abcam.com/abpromise> or contact our technical team.

Terms and conditions

- Guarantee only valid for products bought direct from Abcam or one of our authorized distributors