




Product datasheet

Anti-Lipoate-protein ligase A antibody ab225683

1 Image

Overview

<b>Product name</b>	Anti-Lipoate-protein ligase A antibody
<b>Description</b>	Rabbit polyclonal to Lipoate-protein ligase A
<b>Host species</b>	Rabbit
<b>Tested applications</b>	<b>Suitable for:</b> WB
<b>Species reactivity</b>	<b>Predicted to work with:</b> Escherichia coli 
<b>Immunogen</b>	<p>Recombinant full length protein corresponding to Escherichia coli Lipoate-protein ligase A aa 1-338.</p> <p>Sequence:</p> <pre>MSTLRLLISDSYDPWFNLAVEECIFRQMPATQRVLFLLW RNADTVVIGRAQ NPWKECNTRMEEDNVRLARRSSGGGAVFHDLGNT CFTFMAGKPEYDKTI STSM/LNALNALGVSAEASGRNDLVVKTVEGDRKVS G SAYRETKDRGFHH GTLNADLSRLANYLNPDKKKLAAKGITSVRSRVTNLT ELLPGITHEQV CEAITEAFFAHYGERVEAEIISPKNKTPDLPNFAETFARQ SSWEWNFGQAP AFSHLLDERFTWGGVELHFDVEKGHITRAQVFTDSL N PAPLEALAGRLQG CLYRADMLQQECEALLVDFPEQEKEKELRELSAWMAG A VR</pre> <p>Database link: <a href="#">C4ZT68</a></p> <p style="text-align: right;"> <a href="#">Run BLAST with</a>       <a href="#">Run BLAST with</a></p>
<b>Positive control</b>	WB: Recombinant Escherichia coli Lipoate-protein ligase A protein.

Properties

<b>Form</b>	Liquid
<b>Storage instructions</b>	Shipped at 4°C. Store at +4°C short term (1-2 weeks). Upon delivery aliquot. Store at -20°C long term. Avoid freeze / thaw cycle.

<b>Storage buffer</b>	pH: 7.40 Preservative: 0.03% Proclin Constituents: 50% Glycerol, PBS
<b>Purity</b>	Protein G purified
<b>Purification notes</b>	Purity >95%.
<b>Clonality</b>	Polyclonal
<b>Isotype</b>	IgG

## Applications

Our [Abpromise guarantee](#) covers the use of **ab225683** in the following tested applications.

The application notes include recommended starting dilutions; optimal dilutions/concentrations should be determined by the end user.

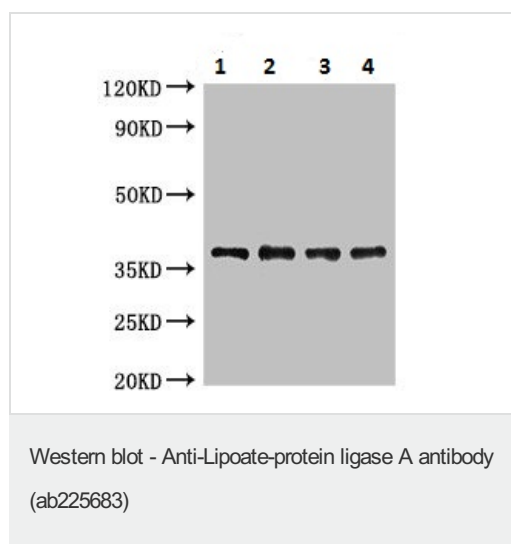
Application	Abreviews	Notes
WB		1/500 - 1/5000. Detects a band of approximately 38 kDa (predicted molecular weight: 38 kDa).

## Target

### Relevance

Function: Catalyzes both the ATP-dependent activation of exogenously supplied lipoate to lipoyl-AMP and the transfer of the activated lipoyl onto the lipoyl domains of lipoate-dependent enzymes.

## Images



**All lanes** : Anti-Lipoate-protein ligase A antibody (ab225683) at 1/500 dilution

**Lane 1** : Recombinant Escherichia coli Lipoate-protein ligase A protein at 0.08 µg

**Lane 2** : Recombinant Escherichia coli Lipoate-protein ligase A protein at 0.04 µg

**Lane 3** : Recombinant Escherichia coli Lipoate-protein ligase A protein at 0.02 µg

**Lane 4** : Recombinant Escherichia coli Lipoate-protein ligase A protein at 0.01 µg

### Secondary

**All lanes** : Goat polyclonal to rabbit IgG at 1/50000 dilution

**Predicted band size:** 38 kDa

**Observed band size:** 38 kDa

**Please note:** All products are "FOR RESEARCH USE ONLY. NOT FOR USE IN DIAGNOSTIC PROCEDURES"

### **Our Abpromise to you: Quality guaranteed and expert technical support**

---

- Replacement or refund for products not performing as stated on the datasheet
- Valid for 12 months from date of delivery
- Response to your inquiry within 24 hours
  
- We provide support in Chinese, English, French, German, Japanese and Spanish
- Extensive multi-media technical resources to help you
- We investigate all quality concerns to ensure our products perform to the highest standards

If the product does not perform as described on this datasheet, we will offer a refund or replacement. For full details of the Abpromise, please visit <https://www.abcam.com/abpromise> or contact our technical team.

### **Terms and conditions**

---

- Guarantee only valid for products bought direct from Abcam or one of our authorized distributors