




Product datasheet

Anti-Liver Carboxylesterase 1/CES1 antibody ab115280

2 Images

Overview

Product name	Anti-Liver Carboxylesterase 1/CES1 antibody
Description	Goat polyclonal to Liver Carboxylesterase 1/CES1
Host species	Goat
Tested applications	Suitable for: WB, IHC-P
Species reactivity	Reacts with: Human Predicted to work with: Chimpanzee, Macaque monkey, Orangutan 
Immunogen	Synthetic peptide corresponding to Human Liver Carboxylesterase 1/CES1 aa 533-544 (internal sequence). Sequence: C-NTQAAQKLKDKE Database link: P23141  Run BLAST with  Run BLAST with
Positive control	Recombinant Human Liver Carboxylesterase 1/CES1 protein (ab114347) can be used as a positive control in WB. Human lung tissue. Human liver lysate.
General notes	This product was previously labelled as Liver Carboxylesterase 1

Reproducibility is key to advancing scientific discovery and accelerating scientists' next breakthrough.

Abcam is leading the way with our range of recombinant antibodies, knockout-validated antibodies and knockout cell lines, all of which support improved reproducibility.

We are also planning to innovate the way in which we present recommended applications and species on our product datasheets, so that only applications & species that have been tested in our own labs, our suppliers or by selected trusted collaborators are covered by our Abpromise™ guarantee.

In preparation for this, we have started to update the applications & species that this product is Abpromise guaranteed for.

We are also updating the applications & species that this product has been "predicted to work with," however this information is not covered by our Abpromise guarantee.

Applications & species from publications and Abreviews that have not been tested in our own labs or in those of our suppliers are not covered by the Abpromise guarantee.

Please check that this product meets your needs before purchasing. If you have any questions, special requirements or concerns, please send us an inquiry and/or contact our Support team ahead of purchase. Recommended alternatives for this product can be found below, as well as customer reviews and Q&As.

Properties

Form	Liquid
Storage instructions	Shipped at 4°C. Upon delivery aliquot and store at -20°C. Avoid repeated freeze / thaw cycles.
Storage buffer	pH: 7.30 Constituents: 99% Tris buffered saline, 0.02% Sodium chloride, 0.5% BSA
Purity	Immunogen affinity purified
Clonality	Polyclonal
Isotype	IgG

Applications

Our [Abpromise guarantee](#) covers the use of **ab115280** in the following tested applications.

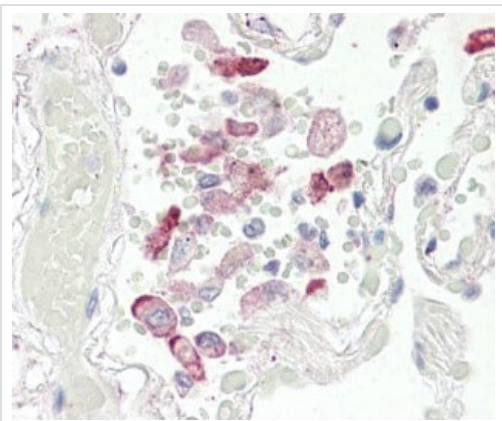
The application notes include recommended starting dilutions; optimal dilutions/concentrations should be determined by the end user.

Application	Abreviews	Notes
WB		Use a concentration of 0.03 - 0.1 µg/ml. Predicted molecular weight: 63 kDa.
IHC-P		Use a concentration of 2.5 µg/ml. Perform heat mediated antigen retrieval with citrate buffer pH 6 before commencing with IHC staining protocol.

Target

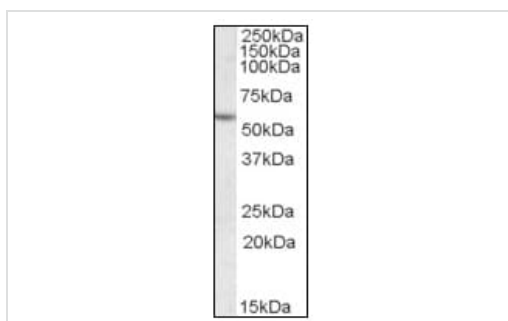
Function	Involved in the detoxification of xenobiotics and in the activation of ester and amide prodrugs. Hydrolyzes aromatic and aliphatic esters, but has no catalytic activity toward amides or a fatty acyl-CoA ester. Hydrolyzes the methyl ester group of cocaine to form benzoylecgonine. Catalyzes the transesterification of cocaine to form cocaethylene. Displays fatty acid ethyl ester synthase activity, catalyzing the ethyl esterification of oleic acid to ethyloleate.
Tissue specificity	Expressed predominantly in liver with lower levels in heart and lung.
Sequence similarities	Belongs to the type-B carboxylesterase/lipase family.
Post-translational modifications	Contains sialic acid. Cleavage of the signal sequence can occur at 2 positions, either between Trp-17 and Gly-18 or between Gly-18 and His-19.
Cellular localization	Endoplasmic reticulum lumen.

Images



Immunohistochemistry (Formalin/PFA-fixed paraffin-embedded sections) - Anti-Liver Carboxylesterase 1/CES1 antibody (ab115280)

Human Lung formalin-fixed, paraffin-embedded tissue stained with ab115280 at 2.5 ug/ml followed by biotinylated anti-goat IgG secondary antibody, alkaline phosphatase-streptavidin and chromogen.



Western blot - Anti-Liver Carboxylesterase 1/CES1 antibody (ab115280)

Anti-Liver Carboxylesterase 1/CES1 antibody (ab115280) at 0.03 µg/ml + Human Liver lysate in RIPA buffer (incubation time: 1 hour) at 35 µg

Developed using the ECL technique.

Predicted band size: 63 kDa

Please note: All products are "FOR RESEARCH USE ONLY. NOT FOR USE IN DIAGNOSTIC PROCEDURES"

Our Abpromise to you: Quality guaranteed and expert technical support

- Replacement or refund for products not performing as stated on the datasheet
- Valid for 12 months from date of delivery
- Response to your inquiry within 24 hours
- We provide support in Chinese, English, French, German, Japanese and Spanish
- Extensive multi-media technical resources to help you
- We investigate all quality concerns to ensure our products perform to the highest standards

If the product does not perform as described on this datasheet, we will offer a refund or replacement. For full details of the Abpromise, please visit <https://www.abcam.com/abpromise> or contact our technical team.

Terms and conditions

- Guarantee only valid for products bought direct from Abcam or one of our authorized distributors