

## Product datasheet

# Anti-LMCD1 antibody [EPR11444] ab179454

Recombinant **RabMAb**

[2 References](#) [4 Images](#)

### Overview

<b>Product name</b>	Anti-LMCD1 antibody [EPR11444]
<b>Description</b>	Rabbit monoclonal [EPR11444] to LMCD1
<b>Host species</b>	Rabbit
<b>Tested applications</b>	<b>Suitable for:</b> WB, ICC/IF, IP <b>Unsuitable for:</b> IHC-P
<b>Species reactivity</b>	<b>Reacts with:</b> Human
<b>Immunogen</b>	Synthetic peptide within Human LMCD1 aa 200-300 (Cysteine residue). The exact sequence is proprietary. Database link: <a href="#">Q9NZU5</a>
<b>Positive control</b>	WB: Human skeletal muscle lysate. ICC/IF: MCF7 cells. IP: LMCD1 IP in human skeletal muscle lysate.
<b>General notes</b>	Mouse, Rat: We have preliminary internal testing data to indicate this antibody may not react with these species. Please contact us for more information.

This product is a recombinant monoclonal antibody, which offers several advantages including:

- High batch-to-batch consistency and reproducibility
- Improved sensitivity and specificity
- Long-term security of supply
- Animal-free production

For more information [see here](#).

Our RabMAb<sup>®</sup> technology is a patented hybridoma-based technology for making rabbit monoclonal antibodies. For details on our patents, please refer to [RabMAb<sup>®</sup> patents](#).

**We are constantly working hard to ensure we provide our customers with best in class antibodies. As a result of this work we are pleased to now offer this antibody in purified format. We are in the process of updating our datasheets. The purified format is designated 'PUR' on our product labels. If you have any questions regarding this update, please contact our Scientific Support team.**

Reproducibility is key to advancing scientific discovery and accelerating scientists' next breakthrough.

Abcam is leading the way with our range of recombinant antibodies, knockout-validated antibodies and knockout cell lines, all of which support improved reproducibility.

We are also planning to innovate the way in which we present recommended applications and species on our product datasheets, so that only applications & species that have been tested in our own labs, our suppliers or by selected trusted collaborators are covered by our Abpromise™ guarantee.

In preparation for this, we have started to update the applications & species that this product is Abpromise guaranteed for.

We are also updating the applications & species that this product has been “predicted to work with,” however this information is not covered by our Abpromise guarantee.

Applications & species from publications and Abreviews that have not been tested in our own labs or in those of our suppliers are not covered by the Abpromise guarantee.

Please check that this product meets your needs before purchasing. If you have any questions, special requirements or concerns, please send us an inquiry and/or contact our Support team ahead of purchase. Recommended alternatives for this product can be found below, as well as customer reviews and Q&As.

## Properties

---

<b>Form</b>	Liquid
<b>Storage instructions</b>	Shipped at 4°C. Store at +4°C short term (1-2 weeks). Upon delivery aliquot. Store at -20°C long term. Avoid freeze / thaw cycle.
<b>Storage buffer</b>	pH: 7.20 Constituents: 0.35% Sodium citrate, 0.17% Sodium chloride, 0.03% EDTA, 59% PBS, 40% Glycerol (glycerin, glycerine), 0.05% BSA
<b>Purity</b>	Protein A purified
<b>Clonality</b>	Monoclonal
<b>Clone number</b>	EPR11444
<b>Isotype</b>	IgG

## Applications

---

Our [Abpromise guarantee](#) covers the use of **ab179454** in the following tested applications.

The application notes include recommended starting dilutions; optimal dilutions/concentrations should be determined by the end user.

Application	Abreviews	Notes
WB		1/1000 - 1/5000. Predicted molecular weight: 41 kDa.
ICC/IF		1/100 - 1/250.
IP		1/10 - 1/100.

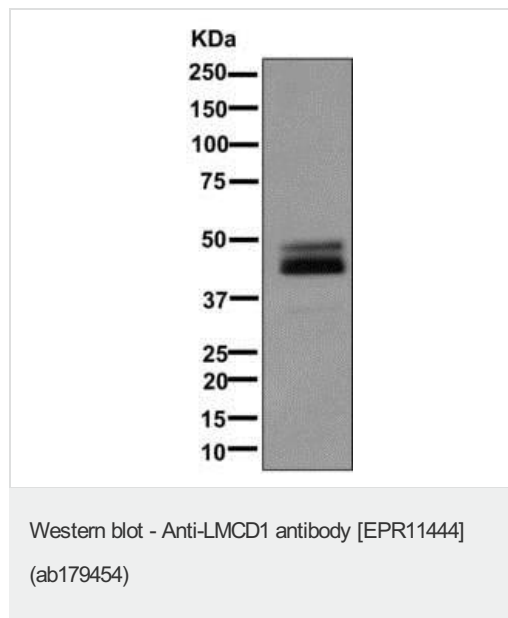
**Application notes**                      Is unsuitable for IHC-P.

## Target

---

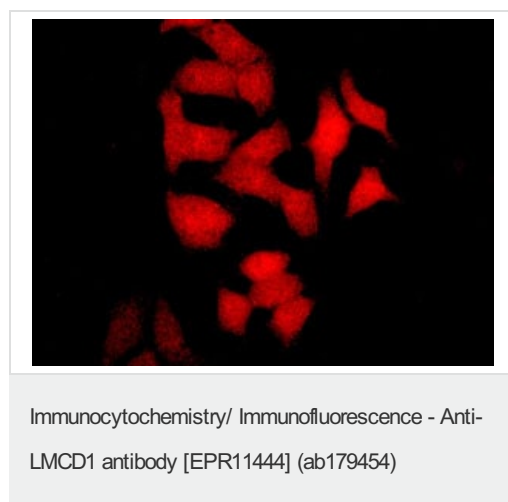
<b>Function</b>	Transcriptional cofactor that restricts GATA6 function by inhibiting DNA-binding, resulting in repression of GATA6 transcriptional activation of downstream target genes. Represses GATA6-mediated trans activation of lung- and cardiac tissue-specific promoters. Inhibits DNA-binding by GATA4 and GATA1 to the cTNC promoter (By similarity). Plays a critical role in the development of cardiac hypertrophy via activation of calcineurin/nuclear factor of activated T cells signaling pathway.
<b>Tissue specificity</b>	Expressed in the heart (at protein level). Expressed in many tissues with highest abundance in skeletal muscle.
<b>Sequence similarities</b>	Contains 2 LIM zinc-binding domains. Contains 1 PET domain.
<b>Domain</b>	The LIM zinc-binding domains and the Cys-rich region mediate interaction with GATA6.
<b>Cellular localization</b>	Cytoplasm. Nucleus. May shuttle between the cytoplasm and the nucleus.

## Images

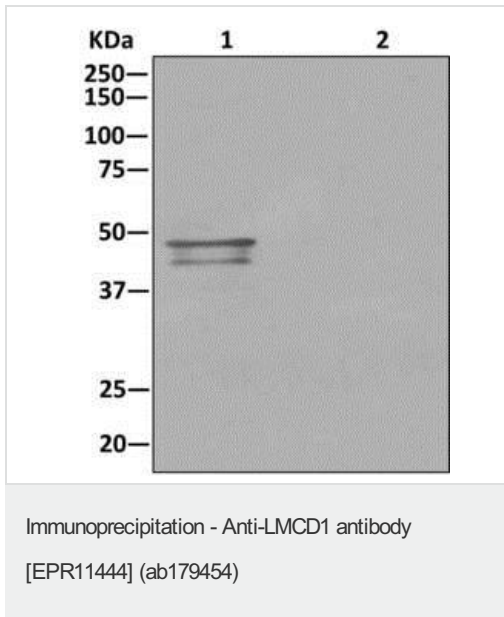


Anti-LMCD1 antibody [EPR11444] (ab179454) at 1/1000 dilution + Human skeletal muscle lysate at 10 µg

**Predicted band size:** 41 kDa







Immunofluorescent analysis of MCF7 (Human breast adenocarcinoma cell line) cells labeling LMCD1 with ab179454 at 1/100 dilution.



Western blot analysis on immunoprecipitation pellet from (Lane 1) Human skeletal muscle lysate or (Lane 2) 1X PBS (negative control) using ab179454, and HRP-conjugated anti-rabbit IgG preferentially detecting the non-reduced form of rabbit IgG.

Why choose a recombinant antibody?

 <p><b>Research with confidence</b> Consistent and reproducible results</p>	 <p><b>Long-term and scalable supply</b> Recombinant technology</p>
 <p><b>Success from the first experiment</b> Confirmed specificity</p>	 <p><b>Ethical standards compliant</b> Animal-free production</p>

Anti-LMCD1 antibody [EPR11444] (ab179454)

**Please note:** All products are "FOR RESEARCH USE ONLY. NOT FOR USE IN DIAGNOSTIC PROCEDURES"

### Our Abpromise to you: Quality guaranteed and expert technical support

- Replacement or refund for products not performing as stated on the datasheet
- Valid for 12 months from date of delivery
- Response to your inquiry within 24 hours
- We provide support in Chinese, English, French, German, Japanese and Spanish
- Extensive multi-media technical resources to help you
- We investigate all quality concerns to ensure our products perform to the highest standards

If the product does not perform as described on this datasheet, we will offer a refund or replacement. For full details of the Abpromise, please visit <https://www.abcam.com/abpromise> or contact our technical team.

## Terms and conditions

---

- Guarantee only valid for products bought direct from Abcam or one of our authorized distributors