

Product datasheet

Anti-LMTK2 antibody [EPR7836(2)] ab172622

Recombinant RabMAb

3 Images

Overview

Product name	Anti-LMTK2 antibody [EPR7836(2)]
Description	Rabbit monoclonal [EPR7836(2)] to LMTK2
Host species	Rabbit
Tested applications	Suitable for: IHC-P, WB Unsuitable for: IP
Species reactivity	Reacts with: Human Does not react with: Mouse, Rat
Immunogen	Synthetic peptide within Human LMTK2 aa 1300-1400. The exact sequence is proprietary. Database link: Q8WU2
Positive control	Human skeletal muscle lysate; Human skeletal muscle tissue.
General notes	<p>This product is a recombinant monoclonal antibody, which offers several advantages including:</p> <ul style="list-style-type: none"> - High batch-to-batch consistency and reproducibility - Improved sensitivity and specificity - Long-term security of supply - Animal-free production <p>For more information see here.</p> <p>Our RabMAb[®] technology is a patented hybridoma-based technology for making rabbit monoclonal antibodies. For details on our patents, please refer to RabMAb[®] patents.</p> <p>Reproducibility is key to advancing scientific discovery and accelerating scientists' next breakthrough.</p> <p>Abcam is leading the way with our range of recombinant antibodies, knockout-validated antibodies and knockout cell lines, all of which support improved reproducibility.</p> <p>We are also planning to innovate the way in which we present recommended applications and species on our product datasheets, so that only applications & species that have been tested in our own labs, our suppliers or by selected trusted collaborators are covered by our Abpromise™ guarantee.</p> <p>In preparation for this, we have started to update the applications & species that this product is Abpromise guaranteed for.</p> <p>We are also updating the applications & species that this product has been “predicted to work with,” however this information is not covered by our Abpromise guarantee.</p>

Applications & species from publications and Abreviews that have not been tested in our own labs or in those of our suppliers are not covered by the Abpromise guarantee.

Please check that this product meets your needs before purchasing. If you have any questions, special requirements or concerns, please send us an inquiry and/or contact our Support team ahead of purchase. Recommended alternatives for this product can be found below, as well as customer reviews and Q&As.

Properties

Form	Liquid
Storage instructions	Shipped at 4°C. Store at +4°C short term (1-2 weeks). Upon delivery aliquot. Store at -20°C long term. Avoid freeze / thaw cycle.
Storage buffer	pH: 7.20 Preservative: 0.01% Sodium azide Constituents: 9% PBS, 40% Glycerol (glycerin, glycerine), 0.05% BSA, 50% Tissue culture supernatant
Purity	Tissue culture supernatant
Clonality	Monoclonal
Clone number	EPR7836(2)
Isotype	IgG

Applications

Our [Abpromise guarantee](#) covers the use of **ab172622** in the following tested applications.

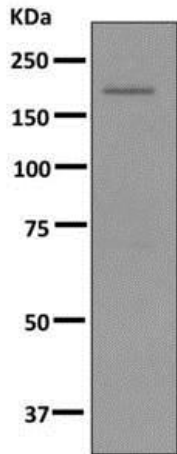
The application notes include recommended starting dilutions; optimal dilutions/concentrations should be determined by the end user.

Application	Abreviews	Notes
IHC-P		1/100 - 1/250. Perform heat mediated antigen retrieval before commencing with IHC staining protocol.
WB		1/1000 - 1/5000. Predicted molecular weight: 164 kDa.

Application notes Is unsuitable for IP.

Target

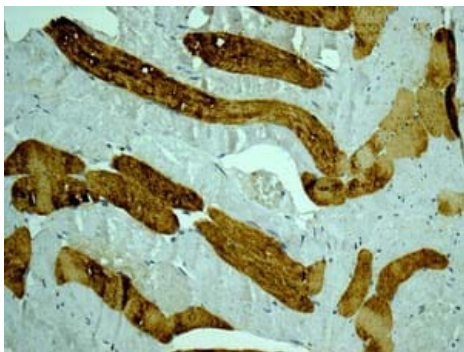
Function	Phosphorylates PPP1C, phosphorylase b and CFTR.
Tissue specificity	Mainly expressed in skeletal muscle, and weakly in brain and pancreas.
Sequence similarities	Belongs to the protein kinase superfamily. Tyr protein kinase family. Contains 1 protein kinase domain.
Post-translational modifications	Autophosphorylated. Phosphorylated.
Cellular localization	Membrane.



Western blot - Anti-LMTK2 antibody [EPR7836(2)] (ab172622)

Anti-LMTK2 antibody [EPR7836(2)] (ab172622) at 1/1000 dilution + Human skeletal muscle lysate at 10 µg

Predicted band size: 164 kDa



Immunohistochemistry (Formalin/PFA-fixed paraffin-embedded sections) - Anti-LMTK2 antibody [EPR7836(2)] (ab172622)

Immunohistochemical analysis of paraffin-embedded Human skeletal muscle tissue labeling LMTK2 with ab172622 at 1/100 dilution.

Perform heat mediated antigen retrieval before commencing with IHC staining protocol.

Why choose a recombinant antibody?



Research with confidence
Consistent and reproducible results



Long-term and scalable supply
Recombinant technology



Success from the first experiment
Confirmed specificity



Ethical standards compliant
Animal-free production

Anti-LMTK2 antibody [EPR7836(2)] (ab172622)

Please note: All products are "FOR RESEARCH USE ONLY. NOT FOR USE IN DIAGNOSTIC PROCEDURES"

Our Abpromise to you: Quality guaranteed and expert technical support

- Replacement or refund for products not performing as stated on the datasheet
- Valid for 12 months from date of delivery
- Response to your inquiry within 24 hours

- We provide support in Chinese, English, French, German, Japanese and Spanish
- Extensive multi-media technical resources to help you
- We investigate all quality concerns to ensure our products perform to the highest standards

If the product does not perform as described on this datasheet, we will offer a refund or replacement. For full details of the Abpromise, please visit <https://www.abcam.com/abpromise> or contact our technical team.

Terms and conditions

- Guarantee only valid for products bought direct from Abcam or one of our authorized distributors