

Product datasheet

Anti-LMX1A antibody - C-terminal ab139726

★★★★★ 1 Abreviews 4 References 5 Images

Overview

Product name	Anti-LMX1A antibody - C-terminal
Description	Rabbit polyclonal to LMX1A - C-terminal
Host species	Rabbit
Specificity	At least two isoforms are known to exist. ab139726 is predicted to not cross-react with LMX1B.
Tested applications	Suitable for: WB, ICC/IF, IHC-P
Species reactivity	Reacts with: Mouse, Rat, Human
Immunogen	Synthetic peptide within Human LMX1A aa 300-350 (C terminal). The exact sequence is proprietary. 16 amino acids. NP_796372 Database link: NP_796372
Positive control	WB: Rat brain tissue lysate. IHC-P: Mouse and human brain tissue. ICC/IF: Mouse neural stem cells.

Properties

Form	Liquid
Storage instructions	Shipped at 4°C. Store at +4°C short term (1-2 weeks). Upon delivery aliquot. Store at -20°C long term. Avoid freeze / thaw cycle.
Storage buffer	Preservative: 0.02% Sodium azide Constituent: PBS
Purity	Immunogen affinity purified
Clonality	Polyclonal
Isotype	IgG

Applications

Our [Abpromise guarantee](#) covers the use of **ab139726** in the following tested applications.

The application notes include recommended starting dilutions; optimal dilutions/concentrations should be determined by the end user.

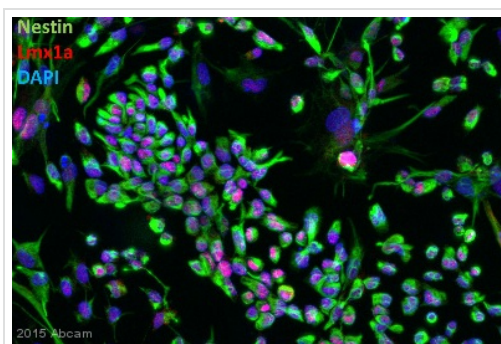
Application	Abreviews	Notes
WB		Use a concentration of 1 - 2 µg/ml. Predicted molecular weight: 42 kDa.

Application	Abreviews	Notes
ICC/IF	★★★★★	Use a concentration of 20 µg/ml.
IHC-P		Use a concentration of 2.5 µg/ml.

Target

Function	Acts as a transcriptional activator by binding to an A/T-rich sequence, the FLAT element, in the insulin gene promoter. Required for development of the roof plate and, in turn, for specification of dorsal cell fates in the CNS and developing vertebrae.
Tissue specificity	Isoform 1 is expressed in many tissues. Not found in heart, liver, spleen and testis. Relatively highly expressed in fetal brain. Isoform LMX1A-4B is expressed in testis.
Sequence similarities	Contains 1 homeobox DNA-binding domain. Contains 2 LIM zinc-binding domains.
Cellular localization	Nucleus.

Images



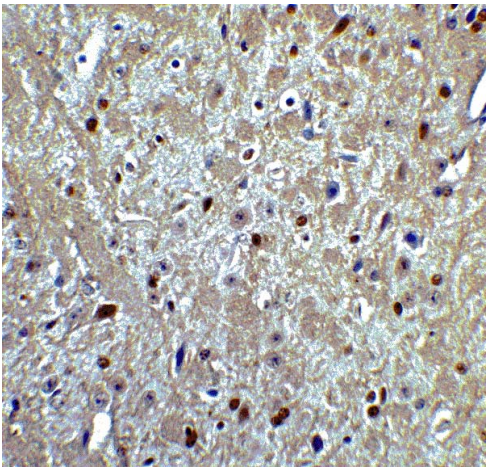
Immunocytochemistry/ Immunofluorescence - Anti-LMX1A antibody - C-terminal (ab139726)

This image is courtesy of an Abreview submitted by Sébastien Brot

ab139726 staining LMX1A (red) in mouse neural stem cells by ICC/IF (Immunocytochemistry/immunofluorescence).

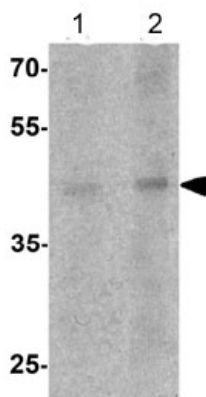
Cells were fixed with formaldehyde, permeabilized with 0.3% Triton X-100 and blocked with 3% BSA for 1 hour at 20°C. Samples were incubated with primary antibody (1/500 in PBS + 3% BSA + 0.3% Triton X-100) for 16 hours at 4°C. An Alexa-Fluor® 568-conjugated donkey anti-rabbit IgG (H+L) monoclonal was used as the secondary antibody.

Blue - DAPI, Green - Nestin.



Immunohistochemistry (Formalin/PFA-fixed paraffin-embedded sections) - Anti-LMX1A antibody - C-terminal (ab139726)

Immunohistochemistry (Formalin-fixed paraffin embedded sections) of mouse brain tissue labeling LMX1A with ab139726 at 5 $\mu\text{g/ml}$.



Western blot - Anti-LMX1A antibody - C-terminal (ab139726)

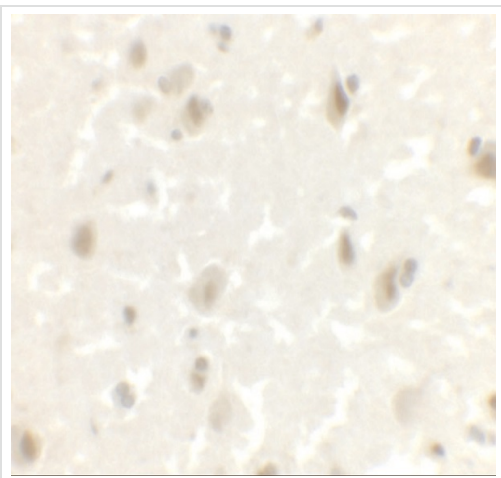
Lane 1 : Anti-LMX1A antibody - C-terminal (ab139726) at 1 μg

Lane 2 : Anti-LMX1A antibody - C-terminal (ab139726) at 2 μg

All lanes : Rat brain tissue lysate

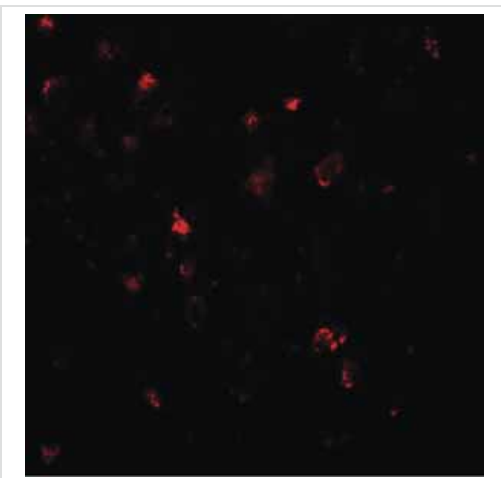
Lysates/proteins at 15 μg per lane.

Predicted band size: 42 kDa



Immunohistochemistry (Formalin-fixed paraffin embedded sections) of human brain tissue labeling LMX1A with antibody ab139726 at 2.5 µg/ml.

Immunohistochemistry (Formalin/PFA-fixed paraffin-embedded sections) - Anti-LMX1A antibody - C-terminal (ab139726)



Immunofluorescence of human brain tissue labeling LMX1A with ab139726 at 20 µg/ml.

Immunocytochemistry/ Immunofluorescence - Anti-LMX1A antibody - C-terminal (ab139726)

Please note: All products are "FOR RESEARCH USE ONLY. NOT FOR USE IN DIAGNOSTIC PROCEDURES"

Our Abpromise to you: Quality guaranteed and expert technical support

- Replacement or refund for products not performing as stated on the datasheet
- Valid for 12 months from date of delivery
- Response to your inquiry within 24 hours

- We provide support in Chinese, English, French, German, Japanese and Spanish
- Extensive multi-media technical resources to help you
- We investigate all quality concerns to ensure our products perform to the highest standards

If the product does not perform as described on this datasheet, we will offer a refund or replacement. For full details of the Abpromise, please visit <https://www.abcam.com/abpromise> or contact our technical team.

Terms and conditions

- Guarantee only valid for products bought direct from Abcam or one of our authorized distributors