

## Product datasheet

# Anti-LNK antibody [EPR7342] ab154848

Recombinant RabMAb

★★★★☆ 1 Abreviews 2 Images

### Overview

<b>Product name</b>	Anti-LNK antibody [EPR7342]
<b>Description</b>	Rabbit monoclonal [EPR7342] to LNK
<b>Host species</b>	Rabbit
<b>Tested applications</b>	<b>Suitable for:</b> WB <b>Unsuitable for:</b> Flow Cyt, ICC/IF, IHC-P or IP
<b>Species reactivity</b>	<b>Reacts with:</b> Human
<b>Immunogen</b>	Synthetic peptide corresponding to residues in Human LNK (Uniprot: Q9UQQ2)
<b>Positive control</b>	Ramos, MOLT4 and Raji cell lysates.
<b>General notes</b>	Mouse, Rat: We have preliminary internal testing data to indicate this antibody may not react with these species. Please contact us for more information.

This product is a recombinant monoclonal antibody, which offers several advantages including:

- High batch-to-batch consistency and reproducibility
- Improved sensitivity and specificity
- Long-term security of supply
- Animal-free production

For more information [see here](#).

Our RabMAb<sup>®</sup> technology is a patented hybridoma-based technology for making rabbit monoclonal antibodies. For details on our patents, please refer to [RabMAb<sup>®</sup> patents](#).

### Properties

<b>Form</b>	Liquid
<b>Storage instructions</b>	Shipped at 4°C. Store at -20°C.
<b>Storage buffer</b>	pH: 7.2 Preservative: 0.01% Sodium azide Constituents: 9% PBS, 40% Glycerol (glycerin, glycerine), 0.05% BSA, 50% Tissue culture supernatant
<b>Purity</b>	Tissue culture supernatant

<b>Clonality</b>	Monoclonal
<b>Clone number</b>	EPR7342
<b>Isotype</b>	IgG

## Applications

**The Abpromise guarantee** Our [Abpromise guarantee](#) covers the use of ab154848 in the following tested applications. The application notes include recommended starting dilutions; optimal dilutions/concentrations should be determined by the end user.

Application	Abreviews	Notes
WB	★★★★★ (1)	1/1000 - 1/10000. Predicted molecular weight: 63 kDa.

**Application notes** Is unsuitable for Flow Cyt, ICC/IF, IHC-P or IP.

## Target

**Function** Links T-cell receptor activation signal to phospholipase C-gamma-1, GRB2 and phosphatidylinositol 3-kinase.

**Tissue specificity** Preferentially expressed by lymphoid cell lines.

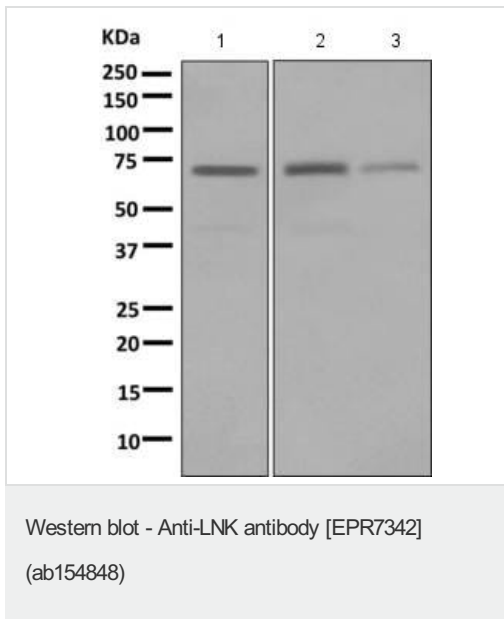
**Involvement in disease** Genetic variations in SH2B3 are associated with susceptibility to celiac disease type 13 (CELIAC13)[MIM:612011]; also known as susceptibility to gluten-sensitive enteropathy type 13. Celiac disease is a multifactorial disorder of the small intestine that is influenced by both environmental and genetic factors. It is characterized by malabsorption resulting from inflammatory injury to the mucosa of the small intestine after the ingestion of wheat gluten or related rye and barley proteins. In its classic form, celiac disease is characterized in children by malabsorption and failure to thrive.

Genetic variations in SH2B3 are associated with susceptibility to insulin-dependent diabetes mellitus (IDDM) [MIM:222100]; also known as diabetes mellitus type 1. IDDM normally starts in childhood or adolescence and is caused by the body's own immune system which destroys the insulin-producing beta cells in the pancreas. Classical features are polydipsia, polyphagia and polyuria, due to hyperglycemia-induced osmotic diuresis.

**Sequence similarities** Belongs to the SH2B adapter family.  
Contains 1 PH domain.  
Contains 1 SH2 domain.

**Post-translational modifications** Tyrosine phosphorylated by LCK.

## Images



**All lanes** : Anti-LNK antibody [EPR7342] (ab154848) at 1/1000 dilution

**Lane 1** : Ramos cell lysate


**Lane 2** : MOLT4 cell lysate


**Lane 3** : Raji cell lysate


Lysates/proteins at 10 µg per lane.


**Predicted band size:** 63 kDa

Why choose a recombinant antibody?

- 

**Research with confidence**  
Consistent and reproducible results
- 

**Long-term and scalable supply**  
Recombinant technology
- 

**Success from the first experiment**  
Confirmed specificity
- 

**Ethical standards compliant**  
Animal-free production

Anti-LNK antibody [EPR7342] (ab154848)

**Please note:** All products are "FOR RESEARCH USE ONLY. NOT FOR USE IN DIAGNOSTIC PROCEDURES"

### Our Abpromise to you: Quality guaranteed and expert technical support

- Replacement or refund for products not performing as stated on the datasheet
- Valid for 12 months from date of delivery
- Response to your inquiry within 24 hours
- We provide support in Chinese, English, French, German, Japanese and Spanish
- Extensive multi-media technical resources to help you

- We investigate all quality concerns to ensure our products perform to the highest standards

If the product does not perform as described on this datasheet, we will offer a refund or replacement. For full details of the Abpromise, please visit <https://www.abcam.com/abpromise> or contact our technical team.

### **Terms and conditions**

---

- Guarantee only valid for products bought direct from Abcam or one of our authorized distributors