


Product datasheet

Anti-LOK antibody - N-terminal ab228802

KO **VALIDATED**

[5 Images](#)

Overview

Product name	Anti-LOK antibody - N-terminal
Description	Rabbit polyclonal to LOK - N-terminal
Host species	Rabbit
Tested applications	Suitable for: IHC-P, WB, ICC/IF
Species reactivity	Reacts with: Human Predicted to work with: Mouse, Rat, Chicken, Cow 
Immunogen	Recombinant fragment within Human LOK (N terminal). The exact sequence is proprietary. Database link: O94804
Positive control	WB: HeLa whole cell extract; A431 whole cell lysate. IHC-P: Human breast cancer tissue. ICC/IF: A431 cells.

Properties

Form	Liquid
Storage instructions	Shipped at 4°C. Store at +4°C short term (1-2 weeks). Upon delivery aliquot. Store at -20°C long term. Avoid freeze / thaw cycle.
Storage buffer	pH: 7.00 Preservative: 0.01% Thimerosal (merthiolate) Constituents: PBS, 1% BSA, 20% Glycerol
Purity	Immunogen affinity purified
Clonality	Polyclonal
Isotype	IgG

Applications

Our [Abpromise guarantee](#) covers the use of **ab228802** in the following tested applications.

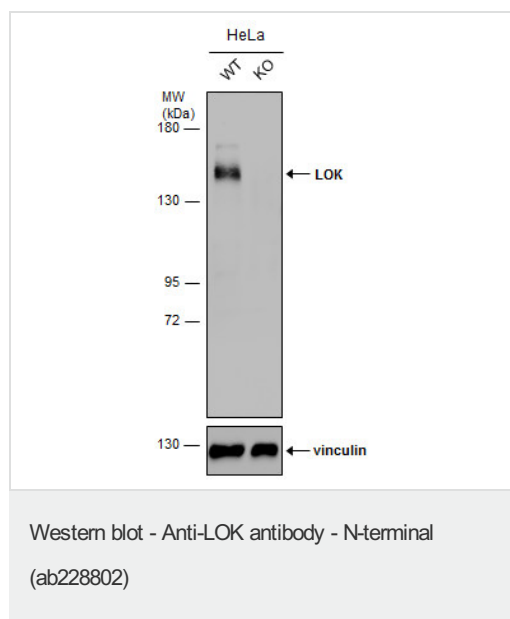
The application notes include recommended starting dilutions; optimal dilutions/concentrations should be determined by the end user.

Application	Abreviews	Notes
IHC-P		1/100 - 1/1000.
WB		1/500 - 1/3000. Predicted molecular weight: 112 kDa.
ICC/IF		1/100 - 1/1000.

Target

Function	Can act on substrates such as myelin basic protein and histone 2A on serine and threonine residues.
Tissue specificity	Expressed predominantly in lymphoid organs.
Sequence similarities	Belongs to the protein kinase superfamily. STE Ser/Thr protein kinase family. STE20 subfamily. Contains 1 protein kinase domain.
Post-translational modifications	Autophosphorylated.

Images



All lanes : Anti-LOK antibody - N-terminal (ab228802) at 1/2000 dilution

Lane 1 : WT HeLa cell extract

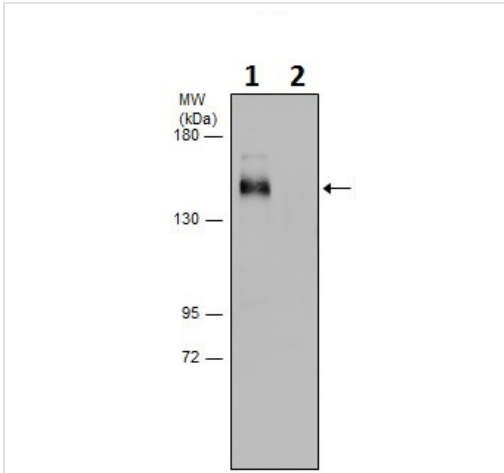
Lane 2 : LOK Knockout HeLa cell extracts

Lysates/proteins at 30 µg per lane.

Secondary

All lanes : HRP-conjugated anti-rabbit IgG

Predicted band size: 112 kDa



Western blot - Anti-LOK antibody - N-terminal (ab228802)

All lanes : Anti-LOK antibody - N-terminal (ab228802) at 1/2000 dilution

Lane 1 : HeLa (human epithelial cell line from cervix adenocarcinoma) whole cell extract

Lane 2 : LOK-knockout HeLa whole cell extract

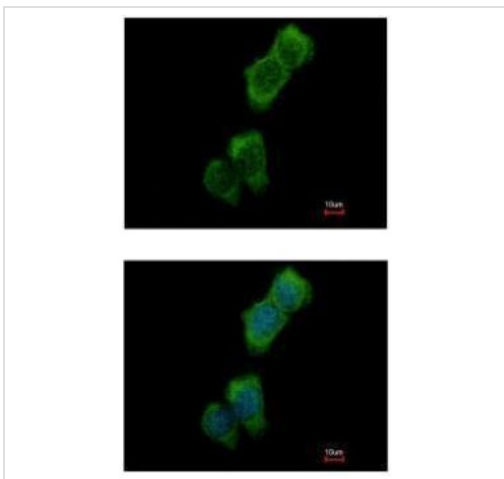
Lysates/proteins at 30 µg per lane.

Secondary

All lanes : HRP-conjugated anti-rabbit IgG

Predicted band size: 112 kDa

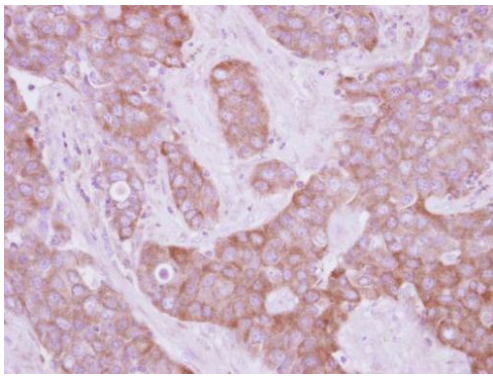
5% SDS-PAGE gel.



Immunocytochemistry/ Immunofluorescence - Anti-LOK antibody - N-terminal (ab228802)

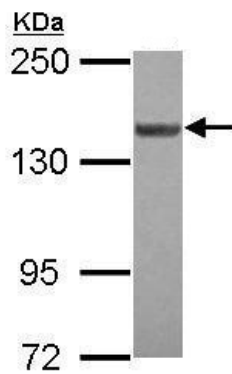
Methanol-fixed A431 (human epidermoid carcinoma cell line) cells stained for LOK (green) using ab228802 at 1/500 dilution in ICC/IF.

Blue: Hoechst 33342 staining.



Immunohistochemistry (Formalin/PFA-fixed paraffin-embedded sections) - Anti-LOK antibody - N-terminal (ab228802)

Paraffin-embedded human breast cancer tissue stained for LOK using ab228802 at 1/250 dilution in immunohistochemical analysis.



Western blot - Anti-LOK antibody - N-terminal (ab228802)

Anti-LOK antibody - N-terminal (ab228802) at 1/2000 dilution + A431 (human epidermoid carcinoma cell line) whole cell lysate at 30 μ g

Predicted band size: 112 kDa

5% SDS-PAGE gel.

Please note: All products are "FOR RESEARCH USE ONLY. NOT FOR USE IN DIAGNOSTIC PROCEDURES"

Our Abpromise to you: Quality guaranteed and expert technical support

- Replacement or refund for products not performing as stated on the datasheet
- Valid for 12 months from date of delivery
- Response to your inquiry within 24 hours
- We provide support in Chinese, English, French, German, Japanese and Spanish
- Extensive multi-media technical resources to help you
- We investigate all quality concerns to ensure our products perform to the highest standards

If the product does not perform as described on this datasheet, we will offer a refund or replacement. For full details of the Abpromise, please visit <https://www.abcam.com/abpromise> or contact our technical team.

Terms and conditions

- Guarantee only valid for products bought direct from Abcam or one of our authorized distributors