



Product datasheet

Anti-LOXL4 antibody ab232866

7 Images

Overview

Product name	Anti-LOXL4 antibody
Description	Rabbit polyclonal to LOXL4
Host species	Rabbit
Tested applications	Suitable for: IHC-P, WB
Species reactivity	Reacts with: Human, Pig
Immunogen	<p>Recombinant fragment (His-tag) corresponding to Human LOXL4 aa 399-552. Expressed in E. coli. N-terminal tag.</p> <p>Sequence:</p> <p>GCQHENDAAVRCNVPNMGFQNQVRLAGGRIPEEGLL EVQVEVNGVPRWGS VCSEWGLTEAMVACRQLGLGFAIHAYKETWFWSGT PRAQEVVMSGVRCs GTELALQQCQRHGPVHCSHGGRFLAGVSCMDSAP DLVMNAQLVQETAYL EDRP</p> <p>Database link: Q96JB6</p> <p style="text-align: right;"> Run BLAST with  Run BLAST with</p>
Positive control	WB: Recombinant human LOXL4 protein. Pig pancreas tissue lysate. IHC-P: Human breast cancer, kidney, colorectal cancer, glioma and liver cancer tissue.

Properties

Form	Liquid
Storage instructions	Shipped at 4°C. Store at +4°C short term (1-2 weeks). Upon delivery aliquot. Store at -20°C long term. Avoid freeze / thaw cycle.
Storage buffer	<p>pH: 7.4</p> <p>Preservative: 0.02% Sodium azide</p> <p>Constituents: PBS, 50% Glycerol</p>
Purity	Protein A purified
Purification notes	Antigen-specific affinity chromatography followed by Protein A affinity chromatography.
Clonality	Polyclonal

Isotype

IgG

Applications

Our [Abpromise guarantee](#) covers the use of **ab232866** in the following tested applications.

The application notes include recommended starting dilutions; optimal dilutions/concentrations should be determined by the end user.

Application	Abreviews	Notes
IHC-P		Use a concentration of 5 - 20 µg/ml.
WB		Use a concentration of 0.2 - 2 µg/ml.

Target

Function

May modulate the formation of a collagenous extracellular matrix.

Tissue specificity

Expressed in many tissues, the highest levels among the tissues studied being in the skeletal muscle, testis and pancreas. Expressed in cartilage.

Sequence similarities

Belongs to the lysyl oxidase family.
Contains 4 SRCR domains.

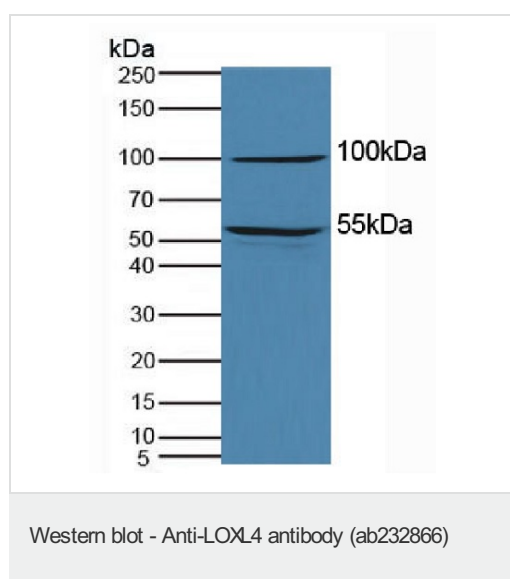
Post-translational modifications

The lysine tyrosylquinone cross-link (LTQ) is generated by condensation of the epsilon-amino group of a lysine with a topaquinone produced by oxidation of tyrosine.

Cellular localization

Secreted > extracellular space.

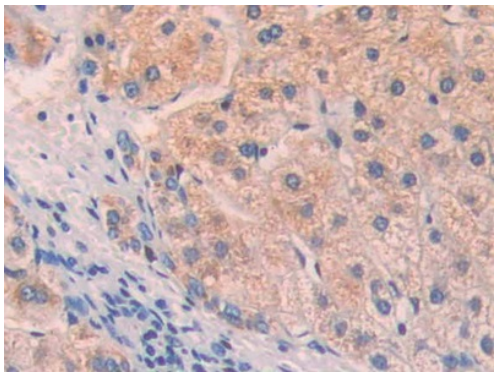
Images



Anti-LOXL4 antibody (ab232866) at 2 µg/ml + Pig pancreas tissue lysate

Secondary

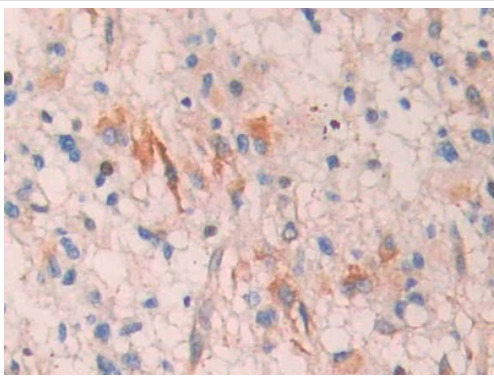
HRP-linked Guinea pig anti-Rabbit at 1/1000 dilution



Immunohistochemistry (Formalin/PFA-fixed paraffin-embedded sections) - Anti-LOXL4 antibody (ab232866)

Formalin-fixed, paraffin-embedded human liver cancer tissue stained for LOXL4 with ab232866 at 30 $\mu\text{g/ml}$ in immunohistochemical analysis.

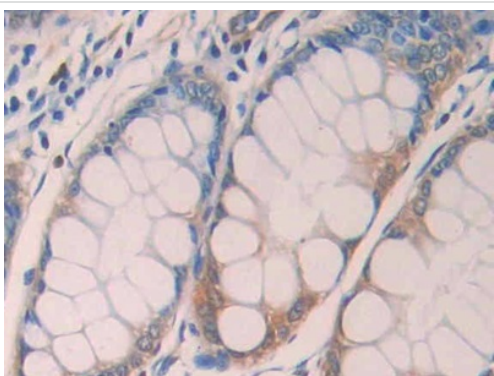
Secondary used: HRP-Linked Goat anti-Rabbit IgG polyclonal at 2 $\mu\text{g/ml}$. DAB staining.



Immunohistochemistry (Formalin/PFA-fixed paraffin-embedded sections) - Anti-LOXL4 antibody (ab232866)

Formalin-fixed, paraffin-embedded human glioma tissue stained for LOXL4 with ab232866 at 30 $\mu\text{g/ml}$ in immunohistochemical analysis.

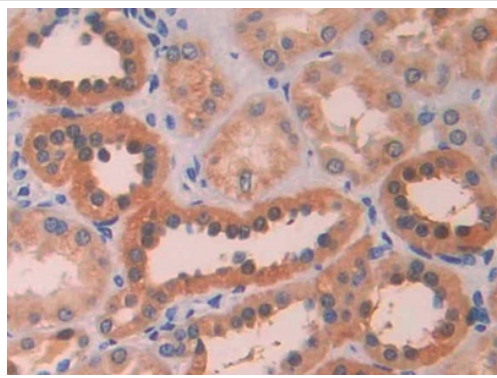
Secondary used: HRP-Linked Goat anti-Rabbit IgG polyclonal at 2 $\mu\text{g/ml}$. DAB staining.



Immunohistochemistry (Formalin/PFA-fixed paraffin-embedded sections) - Anti-LOXL4 antibody (ab232866)

Formalin-fixed, paraffin-embedded human colorectal cancer tissue stained for LOXL4 with ab232866 at 30 $\mu\text{g/ml}$ in immunohistochemical analysis.

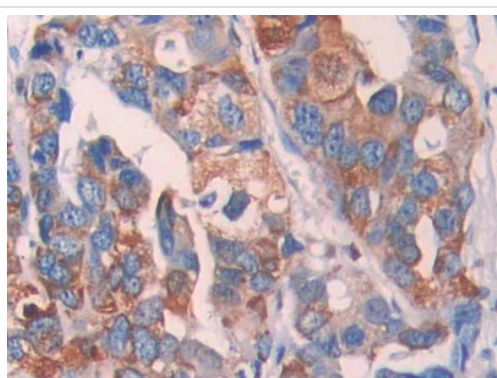
Secondary used: HRP-Linked Goat anti-Rabbit IgG polyclonal at 2 $\mu\text{g/ml}$. DAB staining.



Immunohistochemistry (Formalin/PFA-fixed paraffin-embedded sections) - Anti-LOXL4 antibody (ab232866)

Formalin-fixed, paraffin-embedded human kidney tissue stained for LOXL4 with ab232866 at 30 $\mu\text{g/ml}$ in immunohistochemical analysis.

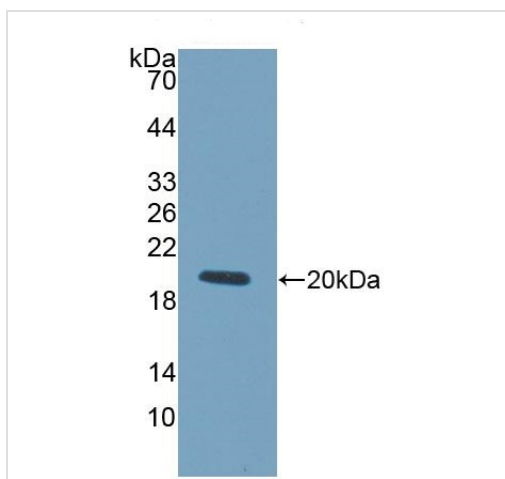
Secondary used: HRP-Linked Goat anti-Rabbit IgG polyclonal at 2 $\mu\text{g/ml}$. DAB staining.



Immunohistochemistry (Formalin/PFA-fixed paraffin-embedded sections) - Anti-LOXL4 antibody (ab232866)

Formalin-fixed, paraffin-embedded human breast cancer tissue stained for LOXL4 with ab232866 at 30 $\mu\text{g/ml}$ in immunohistochemical analysis.

Secondary used: HRP-Linked Goat anti-Rabbit IgG polyclonal at 2 $\mu\text{g/ml}$. DAB staining.



Western blot - Anti-LOXL4 antibody (ab232866)

Anti-LOXL4 antibody (ab232866) at 2 $\mu\text{g/ml}$ + Recombinant human LOXL4 protein

Please note: All products are "FOR RESEARCH USE ONLY. NOT FOR USE IN DIAGNOSTIC PROCEDURES"

Our Abpromise to you: Quality guaranteed and expert technical support

- Replacement or refund for products not performing as stated on the datasheet
- Valid for 12 months from date of delivery
- Response to your inquiry within 24 hours

- We provide support in Chinese, English, French, German, Japanese and Spanish
- Extensive multi-media technical resources to help you
- We investigate all quality concerns to ensure our products perform to the highest standards

If the product does not perform as described on this datasheet, we will offer a refund or replacement. For full details of the Abpromise, please visit <https://www.abcam.com/abpromise> or contact our technical team.

Terms and conditions

- Guarantee only valid for products bought direct from Abcam or one of our authorized distributors