


Product datasheet

Anti-LPA-3 antibody ab93905

2 Images

Overview

Product name	Anti-LPA-3 antibody
Description	Rabbit polyclonal to LPA-3
Host species	Rabbit
Tested applications	Suitable for: IHC-P
Species reactivity	Reacts with: Human Predicted to work with: Mouse, Rat 
Immunogen	Synthetic peptide corresponding to Human LPA-3 (C terminal) conjugated to keyhole limpet haemocyanin.
Positive control	Human heart and liver.
General notes	Protein previously labeled as EDG7.

Properties

Form	Liquid
Storage instructions	Shipped at 4°C. Upon delivery aliquot and store at -80°C. Avoid freeze / thaw cycles.
Storage buffer	Preservative: 0.1% Sodium azide Constituent: PBS
Purity	Immunogen affinity purified
Purification notes	Immunoaffinity Chromatography
Clonality	Polyclonal
Isotype	IgG

Applications

Our [Abpromise guarantee](#) covers the use of **ab93905** in the following tested applications.

The application notes include recommended starting dilutions; optimal dilutions/concentrations should be determined by the end user.

Application	Abreviews	Notes
IHC-P		

Application notes

IHC-P: Use at a concentration of 5 µg/ml. Perform enzymatic antigen retrieval before commencing with IHC staining protocol.

Not yet tested in other applications.

Optimal dilutions/concentrations should be determined by the end user.

Target

Function

Receptor for lysophosphatidic acid (LPA), a mediator of diverse cellular activities. May play a role in the development of ovarian cancer. Seems to be coupled to the G(i)/G(o) and G(q) families of heteromeric G proteins.

Tissue specificity

Most abundantly expressed in prostate, testes, pancreas, and heart, with moderate levels in lung and ovary. No detectable expression in brain, placenta, liver, skeletal muscle, kidney, spleen, thymus, small intestine, colon, or peripheral blood leukocytes.

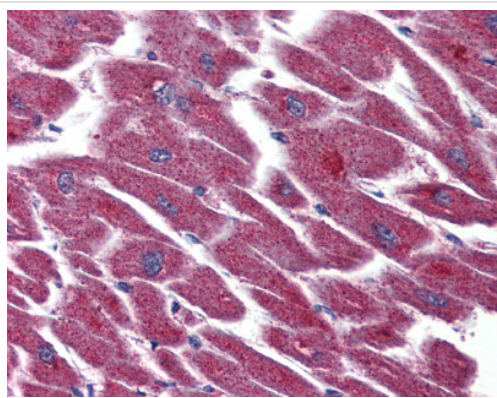
Sequence similarities

Belongs to the G-protein coupled receptor 1 family.

Cellular localization

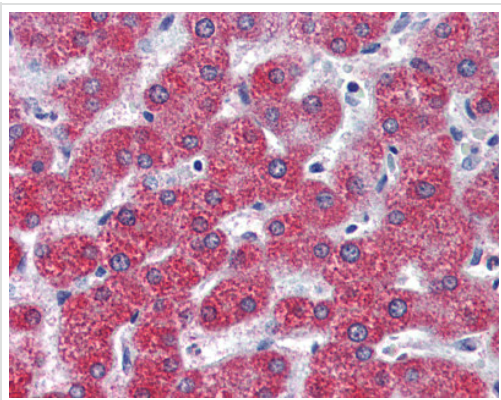
Cell membrane.

Images



ab93905 at 5 µg/ml staining LPA-3 in Formalin-Fixed, Paraffin-Embedded Human heart by immunohistochemistry. Proteinase K digestion was used for antigen retrieval.

Immunohistochemistry (Formalin/PFA-fixed paraffin-embedded sections) - Anti-LPA-3 antibody (ab93905)



Immunohistochemistry (Formalin/PFA-fixed paraffin-embedded sections) - Anti-LPA-3 antibody (ab93905)

ab93905 at 5 µg/ml staining LPA-3 in Formalin-Fixed, Paraffin-Embedded Human liver by immunohistochemistry. Proteinase K digestion was used for antigen retrieval.

Please note: All products are "FOR RESEARCH USE ONLY. NOT FOR USE IN DIAGNOSTIC PROCEDURES"

Our Abpromise to you: Quality guaranteed and expert technical support

- Replacement or refund for products not performing as stated on the datasheet
- Valid for 12 months from date of delivery
- Response to your inquiry within 24 hours

- We provide support in Chinese, English, French, German, Japanese and Spanish
- Extensive multi-media technical resources to help you
- We investigate all quality concerns to ensure our products perform to the highest standards

If the product does not perform as described on this datasheet, we will offer a refund or replacement. For full details of the Abpromise, please visit <https://www.abcam.com/abpromise> or contact our technical team.

Terms and conditions

- Guarantee only valid for products bought direct from Abcam or one of our authorized distributors