

Product datasheet

Anti-LPA-5 antibody ab77680

1 Image

Overview

Product name	Anti-LPA-5 antibody
Description	Rabbit polyclonal to LPA-5
Host species	Rabbit

Tested Applications & Species

Application	Species
WB	Human

See all applications and species data

Immunogen	Synthetic peptide corresponding to Human LPA-5 (internal sequence).
Positive control	HT29 or K562 cells extracts.
General notes	Previously labelled as GPCR GPR92.

The Life Science industry has been in the grips of a reproducibility crisis for a number of years. Abcam is leading the way in addressing the problem with our range of recombinant monoclonal antibodies and knockout edited cell lines for gold-standard validation.

One factor contributing to the crisis is the use of antibodies that are not suitable. This can lead to misleading results and the use of incorrect data informing project assumptions and direction. To help address this challenge, we have introduced an application and species grid on our primary antibody datasheets to make it easy to simplify identification of the right antibody for your needs.

Learn more [here](#).

Properties


Form	Liquid
Storage instructions	Shipped at 4°C. Upon delivery aliquot and store at -20°C. Avoid freeze / thaw cycles.
Storage buffer	pH: 7.40 Preservative: 0.02% Sodium azide Constituents: 50% Glycerol, 0.87% Sodium chloride, PBS Without Mg ²⁺ and Ca ²⁺

Purity	Immunogen affinity purified
Clonality	Polyclonal
Isotype	IgG

Applications

The Abpromise guarantee Our [Abpromise guarantee](#) covers the use of **ab77680** in the following tested applications. The application notes include recommended starting dilutions; optimal dilutions/concentrations should be determined by the end user.

 Guaranteed Tested applications are guaranteed to work and covered by our Abpromise guarantee.	 Predicted Predicted to work for this combination of applications and species but not guaranteed.	 Incompatible Does not work for this combination of applications and species.
--	--	--

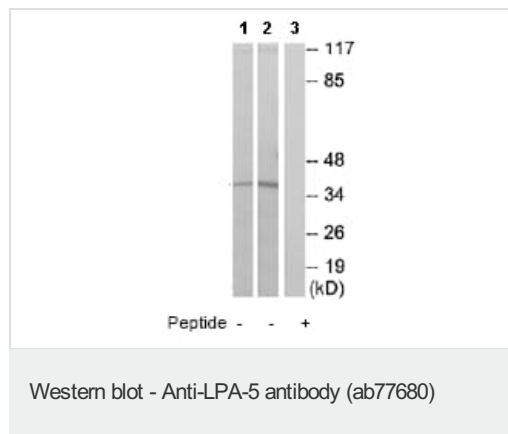
Application	Species
WB	 Human

Application	Abreviews	Notes
WB		1/500 - 1/1000. Predicted molecular weight: 41 kDa.

Target

Function	Receptor for lysophosphatidic acid (LPA), a mediator of diverse cellular activities.
Tissue specificity	Not expressed in frontal cortex, basal forebrain, caudate putamen, thalamus, or hippocampus.
Sequence similarities	Belongs to the G-protein coupled receptor 1 family.
Cellular localization	Cell membrane.

Images



All lanes : Anti-LPA-5 antibody (ab77680) at 1/500 dilution

Lane 1 : extracts from HT29 cells

Lane 2 : extracts from K562 cells

Lane 3 : extracts from K562 cells with immunizing peptide at 10 µg

Lysates/proteins at 20 µg per lane.

Predicted band size: 41 kDa

Observed band size: 41 kDa

Please note: All products are "FOR RESEARCH USE ONLY. NOT FOR USE IN DIAGNOSTIC PROCEDURES"

Our Abpromise to you: Quality guaranteed and expert technical support

- Replacement or refund for products not performing as stated on the datasheet
- Valid for 12 months from date of delivery
- Response to your inquiry within 24 hours

- We provide support in Chinese, English, French, German, Japanese and Spanish
- Extensive multi-media technical resources to help you
- We investigate all quality concerns to ensure our products perform to the highest standards

If the product does not perform as described on this datasheet, we will offer a refund or replacement. For full details of the Abpromise, please visit <https://www.abcam.com/abpromise> or contact our technical team.

Terms and conditions

- Guarantee only valid for products bought direct from Abcam or one of our authorized distributors