


Product datasheet

Anti-LPHN3 antibody - C-terminal ab140843

1 References 2 Images

Overview

<b>Product name</b>	Anti-LPHN3 antibody - C-terminal
<b>Description</b>	Rabbit polyclonal to LPHN3 - C-terminal
<b>Host species</b>	Rabbit
<b>Specificity</b>	BLAST analysis of the peptide immunogen showed no homology with other Human proteins.
<b>Tested applications</b>	<b>Suitable for:</b> IHC-P
<b>Species reactivity</b>	<b>Reacts with:</b> Human <b>Predicted to work with:</b> Mouse, Rat, Horse, Chicken, Hamster, Turkey, Monkey, Zebrafish, Gorilla, Common marmoset, Platypus 
<b>Immunogen</b>	Synthetic peptide, corresponding to 16 amino acids from the C terminal of Human LPHN3 (NP_056051.1).
<b>Positive control</b>	Human tonsil tissue.
<b>General notes</b>	<p>Reproducibility is key to advancing scientific discovery and accelerating scientists' next breakthrough.</p> <p>Abcam is leading the way with our range of recombinant antibodies, knockout-validated antibodies and knockout cell lines, all of which support improved reproducibility.</p> <p>We are also planning to innovate the way in which we present recommended applications and species on our product datasheets, so that only applications &amp; species that have been tested in our own labs, our suppliers or by selected trusted collaborators are covered by our Abpromise™ guarantee.</p> <p>In preparation for this, we have started to update the applications &amp; species that this product is Abpromise guaranteed for.</p> <p>We are also updating the applications &amp; species that this product has been “predicted to work with,” however this information is not covered by our Abpromise guarantee.</p> <p>Applications &amp; species from publications and Abreviews that have not been tested in our own labs or in those of our suppliers are not covered by the Abpromise guarantee.</p> <p>Please check that this product meets your needs before purchasing. If you have any questions, special requirements or concerns, please send us an inquiry and/or contact our Support team ahead of purchase. Recommended alternatives for this product can be found below, as well as customer reviews and Q&amp;As.</p>

Properties

## Properties

---

<b>Form</b>	Liquid
<b>Storage instructions</b>	Shipped at 4°C.
<b>Storage buffer</b>	Preservative: 0.1% Sodium azide Constituent: 99% PBS
<b>Purity</b>	Immunogen affinity purified
<b>Clonality</b>	Polyclonal
<b>Isotype</b>	IgG

## Applications

---

Our [Abpromise guarantee](#) covers the use of **ab140843** in the following tested applications.

The application notes include recommended starting dilutions; optimal dilutions/concentrations should be determined by the end user.

Application	Abreviews	Notes
IHC-P		Use a concentration of 4 - 6 µg/ml. Perform heat mediated antigen retrieval with citrate buffer pH 6 before commencing with IHC staining protocol.

---

## Target

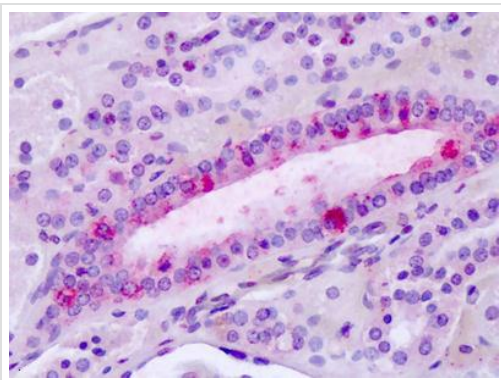
---

<b>Sequence similarities</b>	Belongs to the G-protein coupled receptor 2 family. LN-TM7 subfamily. Contains 1 GPS domain. Contains 1 olfactomedin-like domain. Contains 1 SUEL-type lectin domain.
<b>Post-translational modifications</b>	Proteolytically cleaved into 2 subunits, an extracellular subunit and a seven-transmembrane subunit.
<b>Cellular localization</b>	Cell membrane.

---

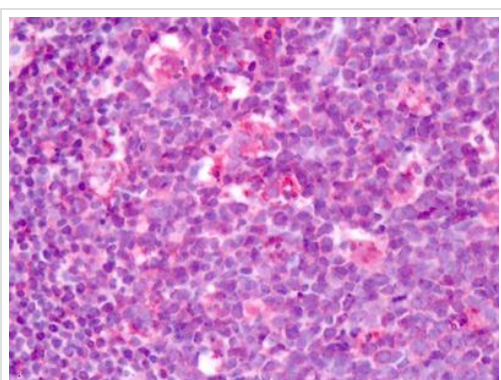
## Images

---



Immunohistochemistry (Formalin/PFA-fixed paraffin-embedded sections) - Anti-LPHN3 antibody - C-terminal (ab140843)

Immunohistochemical analysis of paraffin-embedded Human tonsil tissue labelling LPHN3 with ab140843 at 6 µg/ml.



Immunohistochemistry (Formalin/PFA-fixed paraffin-embedded sections) - Anti-LPHN3 antibody - C-terminal (ab140843)

Immunohistochemical analysis of paraffin-embedded Human tonsil tissue labelling LPHN3 with ab140843 at 6 µg/ml.

**Please note:** All products are "FOR RESEARCH USE ONLY. NOT FOR USE IN DIAGNOSTIC PROCEDURES"

### Our Abpromise to you: Quality guaranteed and expert technical support

---

- Replacement or refund for products not performing as stated on the datasheet
- Valid for 12 months from date of delivery
- Response to your inquiry within 24 hours
- We provide support in Chinese, English, French, German, Japanese and Spanish
- Extensive multi-media technical resources to help you
- We investigate all quality concerns to ensure our products perform to the highest standards

If the product does not perform as described on this datasheet, we will offer a refund or replacement. For full details of the Abpromise, please visit <https://www.abcam.com/abpromise> or contact our technical team.

### Terms and conditions

---

- Guarantee only valid for products bought direct from Abcam or one of our authorized distributors