

## Product datasheet

# Anti-LPO antibody ab231026

7 Images

### Overview

<b>Product name</b>	Anti-LPO antibody
<b>Description</b>	Rabbit polyclonal to LPO
<b>Host species</b>	Rabbit
<b>Tested applications</b>	<b>Suitable for:</b> IHC-P, WB
<b>Species reactivity</b>	<b>Reacts with:</b> Rat, Human
<b>Immunogen</b>	<p>Recombinant fragment (His-tag) corresponding to Rat LPO aa 351-589. (Expressed in E.coli). Sequence:</p> <p>PCEVINATAGVPCFLAGDSRASEQILLATSHTLFIREHN            RLARELSTLNP            HWDGETLYQETRKIMGAFIQIITFRDYLPILLGDEMQKWI            PPYQGYNESV            DPRISNVFTFAFRFGHLEIPSTVSRLDENYQPWGSEPE            LPLHTVFFNTWR            LVKDGGIDPLVRGLLAKKAKLMHQDRMMTGELRNKLF            QPTHTHGFDLAS            INQRCDHGMPPGYNSWRAFCGLSQPKTLEELSAVME            NE</p> <p>Database link: <a href="#">P22079</a></p> <p style="text-align: right;"> <a href="#">Run BLAST with</a>                 <a href="#">Run BLAST with</a> </p>
<b>Positive control</b>	WB: Human saliva; Recombinant rat LPO protein. IHC-P: Rat testis, stomach, intestine, kidney and pancreas tissues.

### Properties

<b>Form</b>	Liquid
<b>Storage instructions</b>	Shipped at 4°C. Store at +4°C short term (1-2 weeks). Upon delivery aliquot. Store at -20°C long term. Avoid freeze / thaw cycle.
<b>Storage buffer</b>	<p>pH: 7.40</p> <p>Preservative: 0.02% Sodium azide</p> <p>Constituents: PBS, 50% Glycerol</p>
<b>Purity</b>	Immunogen affinity purified

<b>Purification notes</b>	ab231026 was purified by antigen-specific affinity chromatography followed by Protein A affinity chromatography.
<b>Clonality</b>	Polyclonal
<b>Isotype</b>	IgG

## Applications

Our [Abpromise guarantee](#) covers the use of **ab231026** in the following tested applications.

The application notes include recommended starting dilutions; optimal dilutions/concentrations should be determined by the end user.

Application	Abreviews	Notes
IHC-P		Use a concentration of 5 - 20 µg/ml.
WB		Use a concentration of 0.2 - 2 µg/ml. Predicted molecular weight: 78 kDa.

## Target

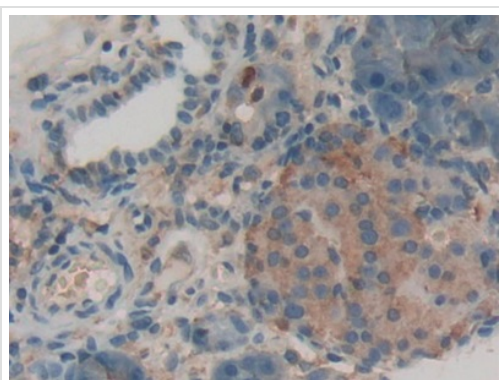
### Relevance

Lactoperoxidase is a natural antibacterial agent in bovine milk, a medium otherwise rich in its ability to support bacterial growth. Milk lactoperoxidase levels vary among species, ranging from little or none in humans to very high concentrations in guinea pigs. Interestingly, lactoperoxidase from milk is identical to the lacrimal and salivary forms of the enzyme. In addition, the enzyme catalyzes the hydrogen peroxide oxidation of iodine and can be employed in labelling proteins with radioiodine.

### Cellular localization

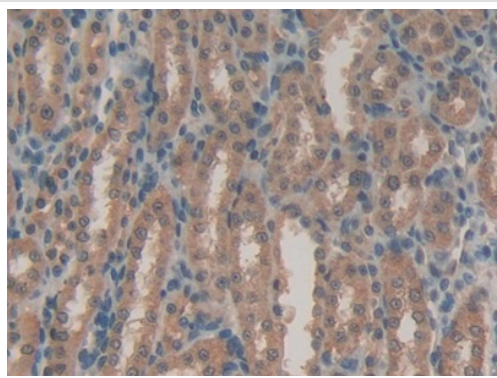
Secreted - extracellular space

## Images



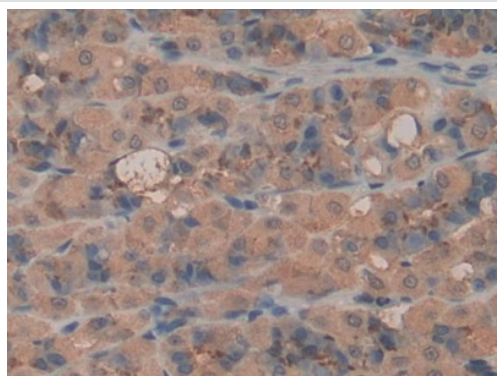
Formalin-fixed, paraffin-embedded rat pancreas tissue stained for LPO with ab231026 at 20 µg/ml in immunohistochemical analysis. DAB staining.

Immunohistochemistry (Formalin/PFA-fixed paraffin-embedded sections) - Anti-LPO antibody (ab231026)



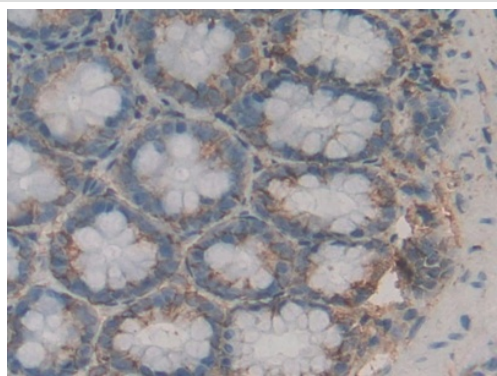
Immunohistochemistry (Formalin/PFA-fixed paraffin-embedded sections) - Anti-LPO antibody (ab231026)

Formalin-fixed, paraffin-embedded rat kidney tissue stained for LPO with ab231026 at 20 µg/ml in immunohistochemical analysis. DAB staining.



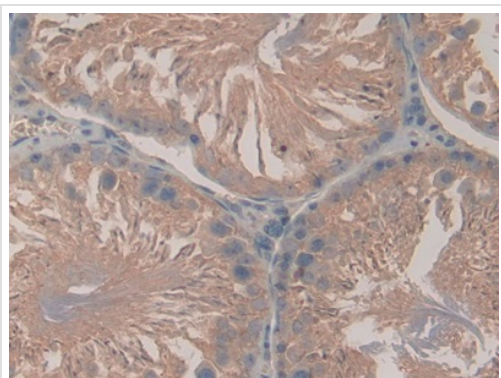
Immunohistochemistry (Formalin/PFA-fixed paraffin-embedded sections) - Anti-LPO antibody (ab231026)

Formalin-fixed, paraffin-embedded rat intestine tissue stained for LPO with ab231026 at 20 µg/ml in immunohistochemical analysis. DAB staining.



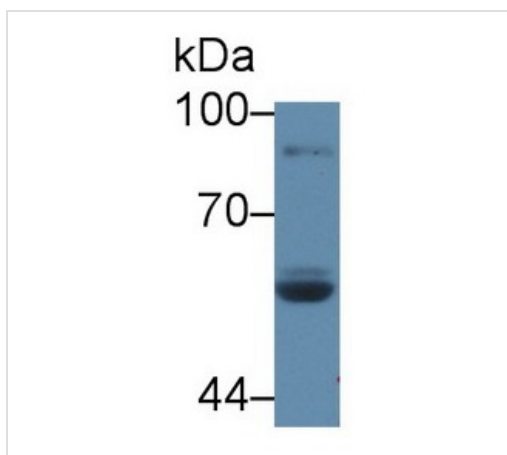
Immunohistochemistry (Formalin/PFA-fixed paraffin-embedded sections) - Anti-LPO antibody (ab231026)

Formalin-fixed, paraffin-embedded rat stomach tissue stained for LPO with ab231026 at 20 µg/ml in immunohistochemical analysis. DAB staining.



Immunohistochemistry (Formalin/PFA-fixed paraffin-embedded sections) - Anti-LPO antibody (ab231026)

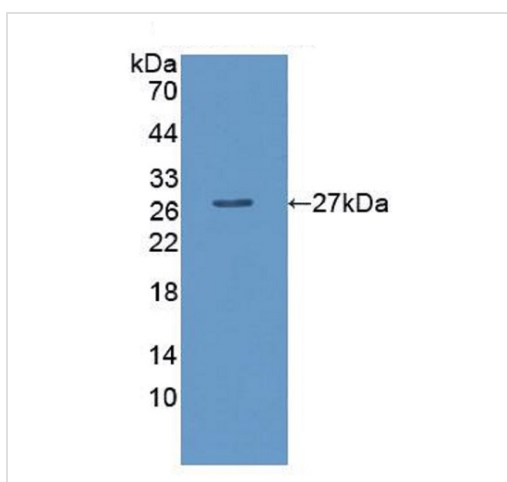
Formalin-fixed, paraffin-embedded rat testis tissue stained for LPO with ab231026 at 20  $\mu\text{g/ml}$  in immunohistochemical analysis. DAB staining.



Western blot - Anti-LPO antibody (ab231026)

Anti-LPO antibody (ab231026) at 2  $\mu\text{g/ml}$  + Human saliva

**Predicted band size:** 78 kDa



Western blot - Anti-LPO antibody (ab231026)

Anti-LPO antibody (ab231026) at 2  $\mu\text{g/ml}$  + Recombinant rat LPO protein

**Predicted band size:** 78 kDa

**Please note:** All products are "FOR RESEARCH USE ONLY AND ARE NOT INTENDED FOR DIAGNOSTIC OR THERAPEUTIC USE"

## **Our Abpromise to you: Quality guaranteed and expert technical support**

---

- Replacement or refund for products not performing as stated on the datasheet
- Valid for 12 months from date of delivery
- Response to your inquiry within 24 hours
  
- We provide support in Chinese, English, French, German, Japanese and Spanish
- Extensive multi-media technical resources to help you
- We investigate all quality concerns to ensure our products perform to the highest standards

If the product does not perform as described on this datasheet, we will offer a refund or replacement. For full details of the Abpromise, please visit <https://www.abcam.com/abpromise> or contact our technical team.

## **Terms and conditions**

---

- Guarantee only valid for products bought direct from Abcam or one of our authorized distributors