




## Product datasheet

# Anti-LRP4 antibody ab230218

2 Images

### Overview

|                            |  |
|----------------------------|--|
| <b>Product name</b>        | Anti-LRP4 antibody   |
| <b>Description</b>         | Rabbit polyclonal to LRP4  |
| <b>Host species</b>        | Rabbit   |
| <b>Tested applications</b> | <b>Suitable for:</b> IHC-P   |
| <b>Species reactivity</b>  | <b>Reacts with:</b> Human<br><b>Predicted to work with:</b> Mouse, Rat    |
| <b>Immunogen</b>           | <p>Recombinant fragment corresponding to Human LRP4 aa 1500-1725.<br/>Sequence:</p> <p>NLDGSEKVLINTDLGWPNGLTLDYDTRRIMWVDAHLDRIE<br/>SADLNGKLR<br/>QVLVSHVSHPFALTQQDRWIWTDWQTKSIQRVDKYSGR<br/>NKETVLANVEG<br/>LMDIIVSPQRQTGTNACGVNNGGCTHLCFARASDFVCA<br/>CPDEPDSRPCS<br/>LVPGLVPPAPRATGMSEKSPVLPNTPPTLYSSTRTRTS<br/>LEEVEGRCSE RDARLGLCARSNDAVPAAPGEGHLIS</p> <p>Database link: <a href="#">O75096</a></p> <p style="text-align: right;">  <a href="#">Run BLAST with</a>                 <a href="#">Run BLAST with</a> </p>   |
| <b>Positive control</b>    | IHC-P: Human pancreatic cancer and adrenal gland tissue.   |
| <b>General notes</b>       | <p>Reproducibility is key to advancing scientific discovery and accelerating scientists' next breakthrough.</p> <p>Abcam is leading the way with our range of recombinant antibodies, knockout-validated antibodies and knockout cell lines, all of which support improved reproducibility.</p> <p>We are also planning to innovate the way in which we present recommended applications and species on our product datasheets, so that only applications &amp; species that have been tested in our own labs, our suppliers or by selected trusted collaborators are covered by our Abpromise™ guarantee.</p> <p>In preparation for this, we have started to update the applications &amp; species that this product is Abpromise guaranteed for.</p> <p>We are also updating the applications &amp; species that this product has been “predicted to work with,” however this information is not covered by our Abpromise guarantee.</p> |

Applications & species from publications and Abreviews that have not been tested in our own labs or in those of our suppliers are not covered by the Abpromise guarantee.

Please check that this product meets your needs before purchasing. If you have any questions, special requirements or concerns, please send us an inquiry and/or contact our Support team ahead of purchase. Recommended alternatives for this product can be found below, as well as customer reviews and Q&As.

## Properties

---

|                             |   |
|-----------------------------|---|
| <b>Form</b>                 | Liquid  |
| <b>Storage instructions</b> | Shipped at 4°C. Store at +4°C short term (1-2 weeks). Upon delivery aliquot. Store at -20°C long term. Avoid freeze / thaw cycle. |
| <b>Storage buffer</b>       | pH: 7.30<br>Preservative: 0.02% Sodium azide<br>Constituents: PBS, 50% Glycerol (glycerin, glycerine)                             |
| <b>Purity</b>               | Immunogen affinity purified   |
| <b>Clonality</b>            | Polyclonal  |
| <b>Isotype</b>              | IgG   |

## Applications

---

Our [Abpromise guarantee](#) covers the use of **ab230218** in the following tested applications.

The application notes include recommended starting dilutions; optimal dilutions/concentrations should be determined by the end user.

| Application | Abreviews | Notes         |
|-------------|-----------|---------------|
| IHC-P       |           | 1/20 - 1/200. |

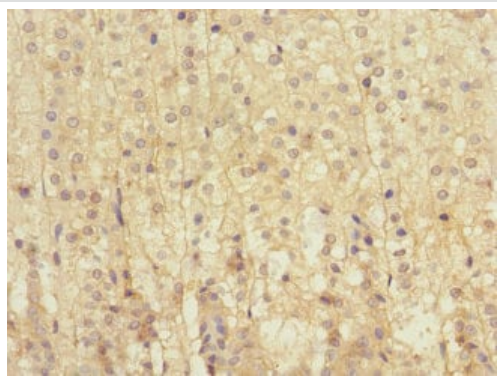
---

## Target

---

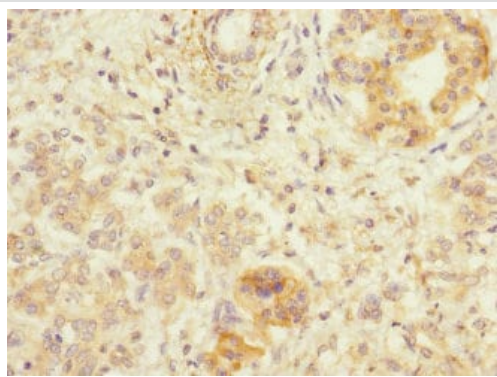
|                               |  |
|-------------------------------|--|
| <b>Function</b>               | Potential cell surface endocytic receptor, which binds and internalizes extracellular ligands for degradation by lysosomes. Involved in the negative regulation of the canonical Wnt signaling pathway, being able to antagonize the LRP6-mediated activation of this pathway.         |
| <b>Tissue specificity</b>     | Expressed in several regions of the brain.   |
| <b>Involvement in disease</b> | Defects in LRP4 are the cause of Cenani-Lenz syndactyly syndrome (CLSS) [MIM:212780]. It is a congenital malformation syndrome defined as complete and complex syndactyly of the hands combined with malformations of the forearm bones and similar manifestations in the lower limbs. |
| <b>Sequence similarities</b>  | Belongs to the LDLR family.<br>Contains 3 EGF-like domains.<br>Contains 8 LDL-receptor class A domains.<br>Contains 20 LDL-receptor class B repeats.   |
| <b>Cellular localization</b>  | Membrane.  |

---



Paraffin-embedded human adreanal gland tissue stained for LRP4 using ab230218 at 1/100 dilution in immunohistochemical analysis.

Immunohistochemistry (Formalin/PFA-fixed paraffin-embedded sections) - Anti-LRP4 antibody (ab230218)



Paraffin-embedded human pancreatic cancer tissue stained for LRP4 using ab230218 at 1/100 dilution in immunohistochemical analysis.

Immunohistochemistry (Formalin/PFA-fixed paraffin-embedded sections) - Anti-LRP4 antibody (ab230218)

**Please note:** All products are "FOR RESEARCH USE ONLY. NOT FOR USE IN DIAGNOSTIC PROCEDURES"

### Our Abpromise to you: Quality guaranteed and expert technical support

---

- Replacement or refund for products not performing as stated on the datasheet
- Valid for 12 months from date of delivery
- Response to your inquiry within 24 hours
  
- We provide support in Chinese, English, French, German, Japanese and Spanish
- Extensive multi-media technical resources to help you
- We investigate all quality concerns to ensure our products perform to the highest standards

If the product does not perform as described on this datasheet, we will offer a refund or replacement. For full details of the Abpromise, please visit <https://www.abcam.com/abpromise> or contact our technical team.

## Terms and conditions

---

- Guarantee only valid for products bought direct from Abcam or one of our authorized distributors