



Product datasheet

Anti-LRRC20 antibody ab235521

3 Images

Overview

Product name	Anti-LRRC20 antibody
Description	Rabbit polyclonal to LRRC20
Host species	Rabbit
Tested applications	Suitable for: WB, IHC-P
Species reactivity	Reacts with: Mouse, Human
Immunogen	<p>Recombinant full length protein corresponding to Human LRRC20 aa 1-184. Sequence:</p> <p>MLKKMGEAVARVARKVNETVESGSDTLDLAECKLVSFPI GKVLNRVSG QIHLTLANNELKSLTSKFMTTFSQLRELHLEGNFLHRLPSE VSALQHLK AIDLSRNQFQDFPEQLTALPALETINLEENEIVDVPVEKLA AMPALRSIN LRFNPLNAEVRVIAPPLIKFDMLMSPEGARAPLP</p> <p>Database link: Q8TCA0-1</p> <p style="text-align: right;">  Run BLAST with  Run BLAST with </p>
Positive control	WB: Jurkat and U937 whole cell lysate; Mouse heart and spleen tissue lysate. IHC-P: Human gastric cancer and testis tissue.
General notes	<p>Reproducibility is key to advancing scientific discovery and accelerating scientists' next breakthrough.</p> <p>Abcam is leading the way with our range of recombinant antibodies, knockout-validated antibodies and knockout cell lines, all of which support improved reproducibility.</p> <p>We are also planning to innovate the way in which we present recommended applications and species on our product datasheets, so that only applications & species that have been tested in our own labs, our suppliers or by selected trusted collaborators are covered by our Abpromise™ guarantee.</p> <p>In preparation for this, we have started to update the applications & species that this product is Abpromise guaranteed for.</p> <p>We are also updating the applications & species that this product has been “predicted to work with,” however this information is not covered by our Abpromise guarantee.</p> <p>Applications & species from publications and Abreviews that have not been tested in our own</p>

labs or in those of our suppliers are not covered by the Abpromise guarantee.

Please check that this product meets your needs before purchasing. If you have any questions, special requirements or concerns, please send us an inquiry and/or contact our Support team ahead of purchase. Recommended alternatives for this product can be found below, as well as customer reviews and Q&As.

Properties

Form	Liquid
Storage instructions	Shipped at 4°C. Store at +4°C short term (1-2 weeks). Upon delivery aliquot. Store at -20°C long term. Do Not Freeze.
Storage buffer	pH: 7.40 Constituents: PBS, 50% Glycerol (glycerin, glycerine), 0.03% Proclin 300
Purity	Protein G purified
Purification notes	Purity >95%
Clonality	Polyclonal
Isotype	IgG

Applications

Our [Abpromise guarantee](#) covers the use of **ab235521** in the following tested applications.

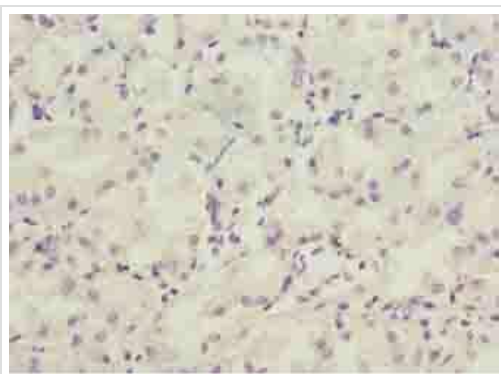
The application notes include recommended starting dilutions; optimal dilutions/concentrations should be determined by the end user.

Application	Abreviews	Notes
WB		1/1000 - 1/5000.
IHC-P		1/20 - 1/200.

Target

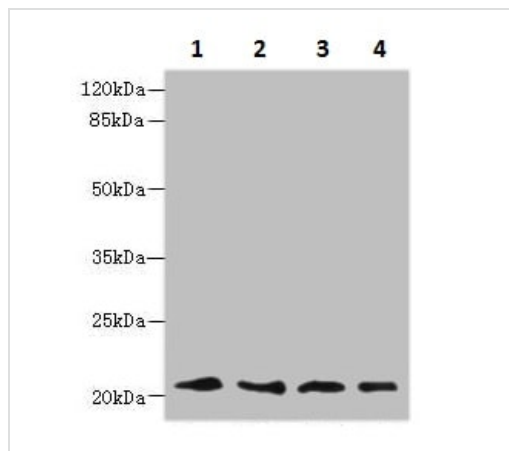
Sequence similarities Contains 5 LRR (leucine-rich) repeats.

Images



Immunohistochemistry (Formalin/PFA-fixed paraffin-embedded sections) - Anti-LRRC20 antibody (ab235521)

Paraffin-embedded human gastric cancer tissue stained for LRRC20 using ab235521 at 1/100 dilution in immunohistochemical analysis.



Western blot - Anti-LRRC20 antibody (ab235521)

All lanes : Anti-LRRC20 antibody (ab235521) at 1/1000 dilution

Lane 1 : Jurkat (human T cell leukemia cell line from peripheral blood) whole cell lysate

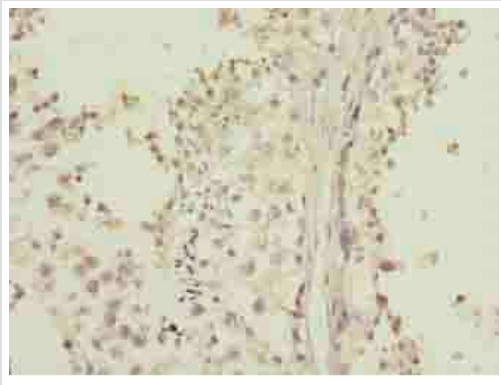
Lane 2 : Mouse heart tissue lysate

Lane 3 : Mouse spleen tissue lysate

Lane 4 : U937 (Human histiocytic lymphoma cell line) whole cell lysate

Secondary

All lanes : Goat polyclonal to Rabbit IgG at 1/10000 dilution



Paraffin-embedded human testis tissue stained for LRRC20 using ab235521 at 1/100 dilution in immunohistochemical analysis.

Immunohistochemistry (Formalin/PFA-fixed paraffin-embedded sections) - Anti-LRRC20 antibody (ab235521)

Please note: All products are "FOR RESEARCH USE ONLY. NOT FOR USE IN DIAGNOSTIC PROCEDURES"

Our Abpromise to you: Quality guaranteed and expert technical support

- Replacement or refund for products not performing as stated on the datasheet
- Valid for 12 months from date of delivery
- Response to your inquiry within 24 hours
- We provide support in Chinese, English, French, German, Japanese and Spanish
- Extensive multi-media technical resources to help you
- We investigate all quality concerns to ensure our products perform to the highest standards

If the product does not perform as described on this datasheet, we will offer a refund or replacement. For full details of the Abpromise, please visit <https://www.abcam.com/abpromise> or contact our technical team.

Terms and conditions

- Guarantee only valid for products bought direct from Abcam or one of our authorized distributors