



## Product datasheet

# Anti-LRRC25/MAPA antibody [OT11D9] ab236395

6 Images

### Overview

<b>Product name</b>	Anti-LRRC25/MAPA antibody [OT11D9]
<b>Description</b>	Mouse monoclonal [OT11D9] to LRRC25/MAPA
<b>Host species</b>	Mouse
<b>Tested applications</b>	<b>Suitable for:</b> WB, IHC-P, ICC/IF, Flow Cyt
<b>Species reactivity</b>	<b>Reacts with:</b> Human
<b>Immunogen</b>	<p>Recombinant full length protein corresponding to Human LRRC25/MAPA aa 1-305. Produced in HEK-293T cell (NP_660299).</p> <p>Sequence:</p> <pre> MGGLAWTLLLPLLLRESDSLEPSTVSSADVDWNAEFS ATCLNFSGLSL SLPHNQSLRASNVILLDLGNGLRELPTFFAHLQKLEVLN VLRNPLSRV DGALAARCDLDLQADCNCALESWHDIRRDNCSGQKPLL CWDTTSSQHNL AFLEVSCAPGLASATIGAVVVSGLLLGLAIAGPVLAWRL WRCRVARERE LNKPWAAQDGPQGLGLQPRYGSRAPKQVAVPSCPS TPDYENMFVGQP AAEHQWDEQGAHPSEDNDFYINYKDIDLASQPVYCNLQS LGQAPMDEEEYVIPGH </pre> <p>Database link: <a href="#">Q8N386</a></p> <p style="text-align: right;">  <a href="#">Run BLAST with</a>  <a href="#">Run BLAST with</a> </p>
<b>Positive control</b>	<p>WB: pCMV6-ENTRY LRRC25/MAPA transfected HEK-293T cells. IHC-P: Human lung carcinoma, endometrium adenocarcinoma and lymphoma tissue. ICC/IF: pCMV6-ENTRY LRRC25/MAPA transfected COS-7 cells Flow: HEK-293T cells transfected with overexpressing plasmid.</p>
<b>General notes</b>	<p>Clone OT11D9 (formerly 1D9).</p> <p>This product was previously labelled as LRRC25</p>

Reproducibility is key to advancing scientific discovery and accelerating scientists' next breakthrough.

Abcam is leading the way with our range of recombinant antibodies, knockout-validated

antibodies and knockout cell lines, all of which support improved reproducibility.

We are also planning to innovate the way in which we present recommended applications and species on our product datasheets, so that only applications & species that have been tested in our own labs, our suppliers or by selected trusted collaborators are covered by our Abpromise™ guarantee.

In preparation for this, we have started to update the applications & species that this product is Abpromise guaranteed for.

We are also updating the applications & species that this product has been “predicted to work with,” however this information is not covered by our Abpromise guarantee.

Applications & species from publications and Abreviews that have not been tested in our own labs or in those of our suppliers are not covered by the Abpromise guarantee.

Please check that this product meets your needs before purchasing. If you have any questions, special requirements or concerns, please send us an inquiry and/or contact our Support team ahead of purchase. Recommended alternatives for this product can be found below, as well as customer reviews and Q&As.

## Properties

---

<b>Form</b>	Liquid
<b>Storage instructions</b>	Shipped at 4°C. Store at +4°C short term (1-2 weeks). Upon delivery aliquot. Store at -20°C long term. Avoid freeze / thaw cycle.
<b>Storage buffer</b>	pH: 7.30 Preservative: 0.02% Sodium azide Constituents: PBS, 1% BSA, 50% Glycerol
<b>Purity</b>	Affinity purified
<b>Purification notes</b>	Purified from cell culture supernatant.
<b>Clonality</b>	Monoclonal
<b>Clone number</b>	OT11D9
<b>Isotype</b>	IgG1

## Applications

---

Our [Abpromise guarantee](#) covers the use of **ab236395** in the following tested applications.

The application notes include recommended starting dilutions; optimal dilutions/concentrations should be determined by the end user.

Application	Abreviews	Notes
WB		1/2000. Predicted molecular weight: 33 kDa.
IHC-P		1/150. Perform heat mediated antigen retrieval with citrate buffer pH 6 before commencing with IHC staining protocol.
ICC/IF		1/100.
Flow Cyt		1/100.

---

## Target

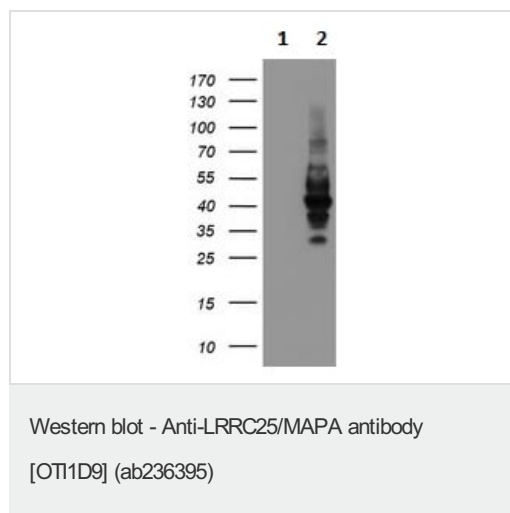
### Relevance

LRRC25 is a single-pass type I membrane protein. It contains 2 LRR (leucine-rich) repeats. LRRC25 may be involved in the activation of cells of innate and acquired immunity.

### Cellular localization

Membrane; Single-pass type I membrane protein.

## Images



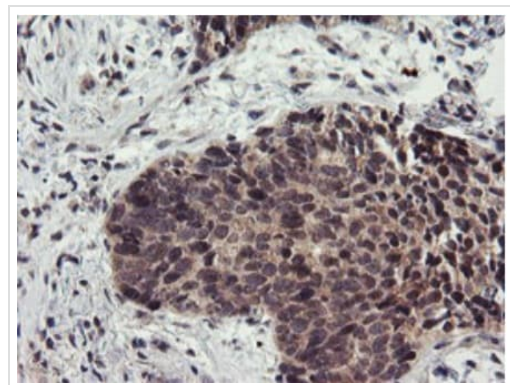
**All lanes :** Anti-LRRC25/MAPA antibody [OT11D9] (ab236395) at 1/2000 dilution

**Lane 1 :** pCMV6-ENTRY control transfected HEK-293T (Human epithelial cell line from embryonic kidney transformed with large T antigen) cell lysate

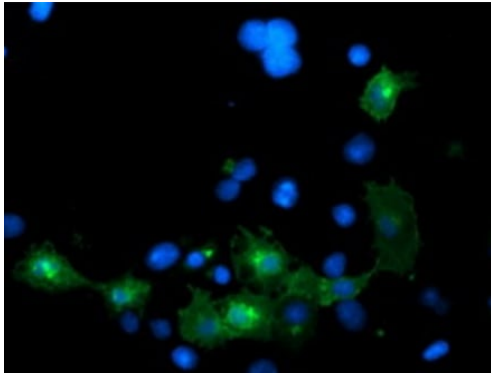
**Lane 2 :** pCMV6-ENTRY LRRC25/MAPA transfected HEK-293T (Human epithelial cell line from embryonic kidney transformed with large T antigen) cell lysate

Lysates/proteins at 5  $\mu$ g per lane.

**Predicted band size:** 33 kDa

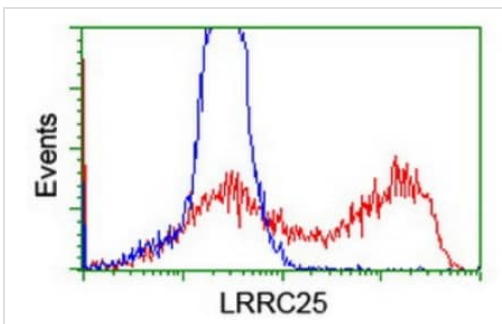


Paraffin-embedded human lung carcinoma tissue stained for LRRC25/MAPA using ab236395 at 1/150 in immunohistochemical analysis.



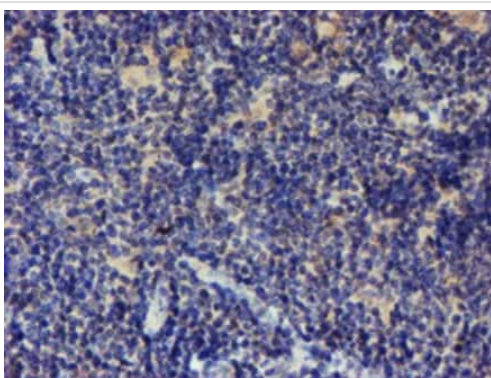
Immunocytochemistry/ Immunofluorescence - Anti-LRRC25/MAPA antibody [OT11D9] (ab236395)

COS-7 (African green monkey kidney fibroblast-like cell line) cells transfected with pCMV6-ENTRY LRRC25/MAPA labeling LRRC25/MAPA using ab236395 at 1/100 dilution in ICC/IF.



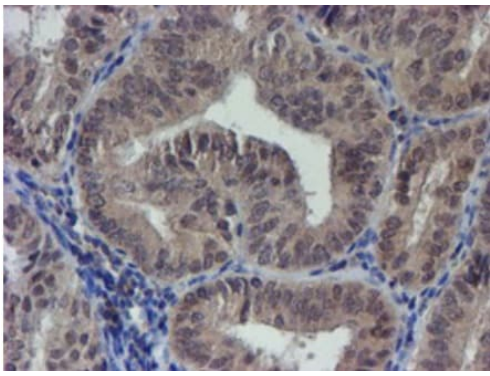
Flow Cytometry - Anti-LRRC25/MAPA antibody [OT11D9] (ab236395)

Flow cytometric analysis of HEK-293T (Human epithelial cell line from embryonic kidney transformed with large T antigen) cells transfected with either overexpress plasmid (Red) or empty vector control plasmid (Blue).



Immunohistochemistry (Formalin/PFA-fixed paraffin-embedded sections) - Anti-LRRC25/MAPA antibody [OT11D9] (ab236395)

Paraffin-embedded human lymphoma tissue stained for LRRC25/MAPA using ab236395 at 1/150 in immunohistochemical analysis.



Paraffin-embedded human endometrium adenocarcinoma tissue stained for LRRC25/MAPA using ab236395 at 1/150 in immunohistochemical analysis.

Immunohistochemistry (Formalin/PFA-fixed paraffin-embedded sections) - Anti-LRRC25/MAPA antibody [OT11D9] (ab236395)

**Please note:** All products are "FOR RESEARCH USE ONLY. NOT FOR USE IN DIAGNOSTIC PROCEDURES"

### Our Abpromise to you: Quality guaranteed and expert technical support

---

- Replacement or refund for products not performing as stated on the datasheet
- Valid for 12 months from date of delivery
- Response to your inquiry within 24 hours
- We provide support in Chinese, English, French, German, Japanese and Spanish
- Extensive multi-media technical resources to help you
- We investigate all quality concerns to ensure our products perform to the highest standards

If the product does not perform as described on this datasheet, we will offer a refund or replacement. For full details of the Abpromise, please visit <https://www.abcam.com/abpromise> or contact our technical team.

### Terms and conditions

---

- Guarantee only valid for products bought direct from Abcam or one of our authorized distributors