

Product datasheet

Anti-LRRFIP1 antibody ab229466

3 Images

Overview

Product name	Anti-LRRFIP1 antibody
Description	Rabbit polyclonal to LRRFIP1
Host species	Rabbit
Tested applications	Suitable for: WB, ICC/IF
Species reactivity	Reacts with: Human
Immunogen	Recombinant fragment within Human LRRFIP1 (internal sequence). The exact sequence is proprietary. Database link: Q32MZ4
Positive control	WB: HEK-239T, A431 and NCI-H929 whole cell extracts. ICC/IF: A431 cells.
General notes	<p>Reproducibility is key to advancing scientific discovery and accelerating scientists' next breakthrough.</p> <p>Abcam is leading the way with our range of recombinant antibodies, knockout-validated antibodies and knockout cell lines, all of which support improved reproducibility.</p> <p>We are also planning to innovate the way in which we present recommended applications and species on our product datasheets, so that only applications & species that have been tested in our own labs, our suppliers or by selected trusted collaborators are covered by our Abpromise™ guarantee.</p> <p>In preparation for this, we have started to update the applications & species that this product is Abpromise guaranteed for.</p> <p>We are also updating the applications & species that this product has been "predicted to work with," however this information is not covered by our Abpromise guarantee.</p> <p>Applications & species from publications and Abreviews that have not been tested in our own labs or in those of our suppliers are not covered by the Abpromise guarantee.</p> <p>Please check that this product meets your needs before purchasing. If you have any questions, special requirements or concerns, please send us an inquiry and/or contact our Support team ahead of purchase. Recommended alternatives for this product can be found below, as well as customer reviews and Q&As.</p>

Properties

Form	Liquid
-------------	--------

Storage instructions	Shipped at 4°C. Store at +4°C short term (1-2 weeks). Upon delivery aliquot. Store at -20°C. Avoid freeze / thaw cycle.
Storage buffer	pH: 7.00 Preservative: 0.025% Proclin 300 Constituents: 79% PBS, 20% Glycerol (glycerin, glycerine)
Purity	Immunogen affinity purified
Clonality	Polyclonal
Isotype	IgG

Applications

Our [Abpromise guarantee](#) covers the use of **ab229466** in the following tested applications.

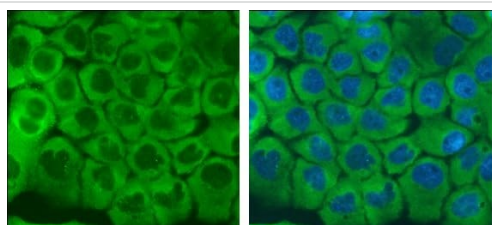
The application notes include recommended starting dilutions; optimal dilutions/concentrations should be determined by the end user.

Application	Abreviews	Notes
WB		1/500 - 1/10000. Predicted molecular weight: 89 kDa.
ICC/IF		1/100 - 1/1000.

Target

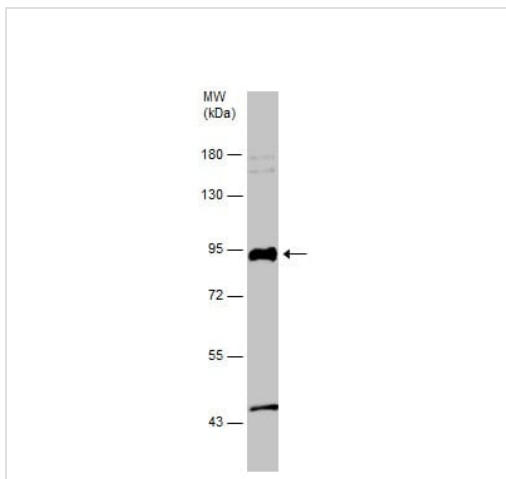
Function	Transcriptional repressor which preferentially binds to the GC-rich consensus sequence (5'-AGCCCCCGGCG-3') and may regulate expression of TNF, EGFR and PDGFA. May control smooth muscle cells proliferation following artery injury through PDGFA repression. May also bind double-stranded RNA.
Tissue specificity	Ubiquitously expressed.
Sequence similarities	Belongs to the LRRFIP family.
Developmental stage	Widely expressed in fetal tissues.
Cellular localization	Nucleus. Cytoplasm.

Images



A431 (human epidermoid carcinoma cell line) cells stained for LRRFIP1 (green) using ab229466 at 1/500 dilution in ICC/IF. Cells were fixed in 4% paraformaldehyde at RT for 15 minutes. Nuclear counterstain: Hoechst 33342 (blue).

Immunocytochemistry/ Immunofluorescence - Anti-LRRFIP1 antibody (ab229466)

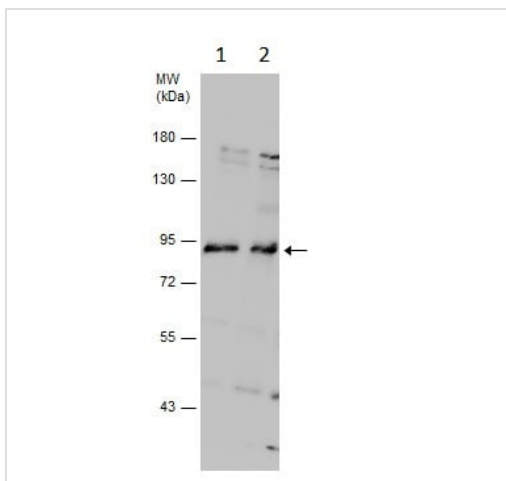


Western blot - Anti-LRRFIP1 antibody (ab229466)

Anti-LRRFIP1 antibody (ab229466) at 1/1000 dilution + NCI-H929 (human bone marrow lymphoblast cell line) whole cell extract at 30 µg

Predicted band size: 89 kDa

7.5% SDS-PAGE gel.



Western blot - Anti-LRRFIP1 antibody (ab229466)

All lanes : Anti-LRRFIP1 antibody (ab229466) at 1/5000 dilution

Lane 1 : HEK-293T (human epithelial cell line from embryonic kidney transformed with large T antigen) whole cell extract

Lane 2 : A431 (human epidermoid carcinoma cell line) whole cell extract

Lysates/proteins at 30 µg per lane.

Predicted band size: 89 kDa

7.5% SDS-PAGE gel.

Please note: All products are "FOR RESEARCH USE ONLY. NOT FOR USE IN DIAGNOSTIC PROCEDURES"

Our Abpromise to you: Quality guaranteed and expert technical support

- Replacement or refund for products not performing as stated on the datasheet
- Valid for 12 months from date of delivery
- Response to your inquiry within 24 hours
- We provide support in Chinese, English, French, German, Japanese and Spanish
- Extensive multi-media technical resources to help you
- We investigate all quality concerns to ensure our products perform to the highest standards

If the product does not perform as described on this datasheet, we will offer a refund or replacement. For full details of the Abpromise, please visit <https://www.abcam.com/abpromise> or contact our technical team.

Terms and conditions

- Guarantee only valid for products bought direct from Abcam or one of our authorized distributors