

Product datasheet

Anti-LSECtin antibody [EPR13724] ab181196

Recombinant RabMAb

5 Images

Overview

Product name	Anti-LSECtin antibody [EPR13724]
Description	Rabbit monoclonal [EPR13724] to LSECtin
Host species	Rabbit
Tested applications	Suitable for: WB, IHC-P
Species reactivity	Reacts with: Mouse, Human
Immunogen	Recombinant fragment within Human LSECtin aa 50-200. The exact sequence is proprietary. Database link: Q6UXB4
Positive control	WB: Human fetal liver lysate and mouse liver lysates. IHC-P: Human lymph node lysate and tissue, Human liver tissue.
General notes	Previously labelled as CLEC4G.

This product is a recombinant monoclonal antibody, which offers several advantages including:

- High batch-to-batch consistency and reproducibility
- Improved sensitivity and specificity
- Long-term security of supply
- Animal-free production

For more information [see here](#).

Our RabMAb[®] technology is a patented hybridoma-based technology for making rabbit monoclonal antibodies. For details on our patents, please refer to [RabMAb[®] patents](#).

Reproducibility is key to advancing scientific discovery and accelerating scientists' next breakthrough.

Abcam is leading the way with our range of recombinant antibodies, knockout-validated antibodies and knockout cell lines, all of which support improved reproducibility.

We are also planning to innovate the way in which we present recommended applications and species on our product datasheets, so that only applications & species that have been tested in our own labs, our suppliers or by selected trusted collaborators are covered by our Abpromise[™] guarantee.

In preparation for this, we have started to update the applications & species that this product is Abpromise guaranteed for.

We are also updating the applications & species that this product has been "predicted to work with," however this information is not covered by our Abpromise guarantee.

Applications & species from publications and Abreviews that have not been tested in our own labs or in those of our suppliers are not covered by the Abpromise guarantee.

Please check that this product meets your needs before purchasing. If you have any questions, special requirements or concerns, please send us an inquiry and/or contact our Support team ahead of purchase. Recommended alternatives for this product can be found below, as well as customer reviews and Q&As.

Properties

Form	Liquid
Storage instructions	Shipped at 4°C. Store at +4°C short term (1-2 weeks). Upon delivery aliquot. Store at -20°C long term. Avoid freeze / thaw cycle.
Storage buffer	Preservative: 0.01% Sodium azide Constituents: 59% PBS, 40% Glycerol (glycerin, glycerine), 0.05% BSA
Purity	Tissue culture supernatant
Clonality	Monoclonal
Clone number	EPR13724
Isotype	IgG

Applications

Our [Abpromise guarantee](#) covers the use of **ab181196** in the following tested applications.

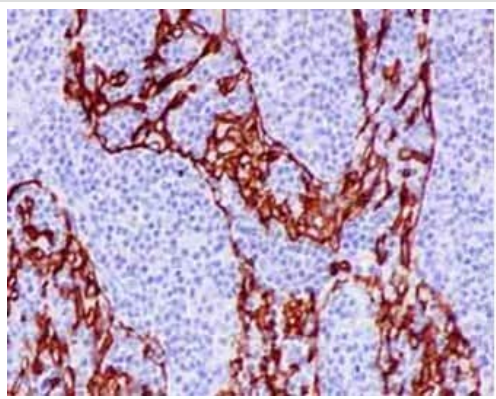
The application notes include recommended starting dilutions; optimal dilutions/concentrations should be determined by the end user.

Application	Abreviews	Notes
WB		1/1000. Detects a band of approximately 40 kDa (predicted molecular weight: 33 kDa).
IHC-P		1/100 - 1/250. Perform heat mediated antigen retrieval with Tris/EDTA buffer pH 9.0 before commencing with IHC staining protocol.

Target

Sequence similarities	Contains 1 C-type lectin domain.
Cellular localization	Membrane.

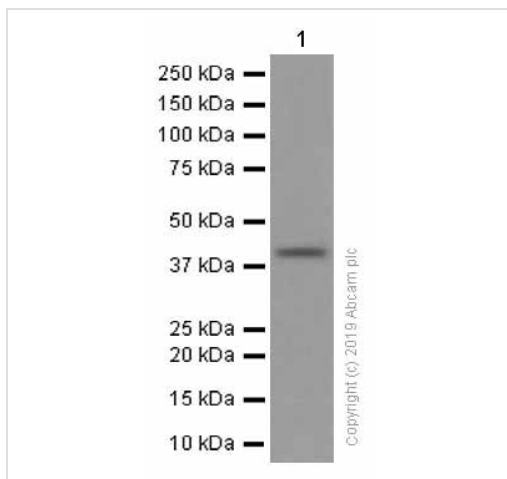
Images



Immunohistochemistry (Formalin/PFA-fixed paraffin-embedded sections) - Anti-LSECtin antibody [EPR13724] (ab181196)

Immunohistochemical analysis of paraffin-embedded Human lymph node tissue labeling LSECtin with ab181196 at 1/250 dilution. Secondary antibody: anti rabbit IgG (HRP) prediluted. Counter stained with Hematoxylin.

Perform heat mediated antigen retrieval with EDTA buffer pH 9 before commencing with IHC staining protocol.



Western blot - Anti-LSECtin antibody [EPR13724] (ab181196)

Anti-LSECtin antibody [EPR13724] (ab181196) at 1/1000 dilution + Mouse liver lysates at 15 µg

Secondary

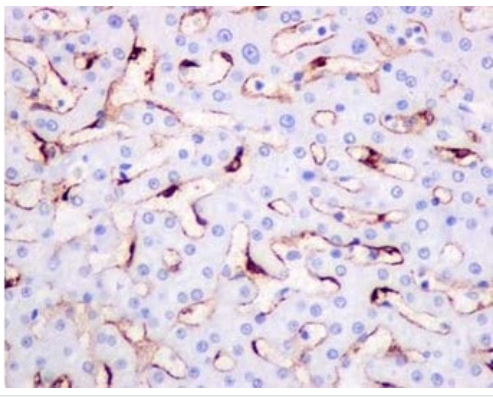
Goat Anti-Rabbit IgG H&L (HRP) (ab97051) at 1/20000 dilution

Predicted band size: 33 kDa

Observed band size: 40 kDa

[why is the actual band size different from the predicted?](#)

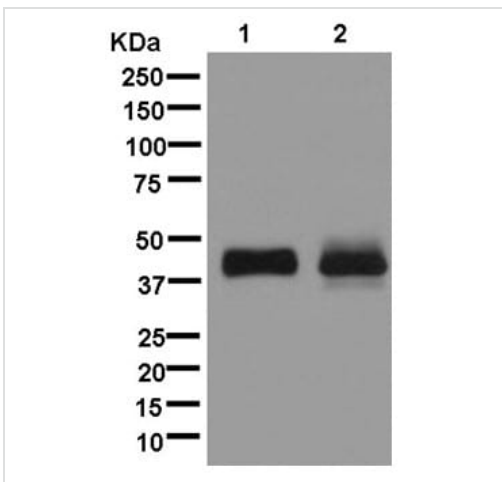
Exposure time: 180 seconds



Immunohistochemistry (Formalin/PFA-fixed paraffin-embedded sections) - Anti-LSECtin antibody [EPR13724] (ab181196)

Immunohistochemical analysis of paraffin-embedded Human liver tissue labeling LSECtin with ab181196 at 1/250 dilution. Secondary antibody: anti rabbit IgG (HRP) prediluted. Counter stained with Hematoxylin.

Perform heat mediated antigen retrieval with EDTA buffer pH 9 before commencing with IHC staining protocol.



Western blot - Anti-LSECtin antibody [EPR13724] (ab181196)

All lanes : Anti-LSECtin antibody [EPR13724] (ab181196) at 1/1000 dilution

Lane 1 : Human fetal liver lysate

Lane 2 : Human lymph node lysate

Lysates/proteins at 20 µg per lane.

Secondary

All lanes : Goat Anti-Rabbit IgG H&L (HRP) (ab136636) at 1/500 dilution

Predicted band size: 33 kDa

Why choose a recombinant antibody?

- Research with confidence**
Consistent and reproducible results
- Long-term and scalable supply**
Recombinant technology
- Success from the first experiment**
Confirmed specificity
- Ethical standards compliant**
Animal-free production

Anti-LSECtin antibody [EPR13724] (ab181196)

Please note: All products are "FOR RESEARCH USE ONLY. NOT FOR USE IN DIAGNOSTIC PROCEDURES"

Our Abpromise to you: Quality guaranteed and expert technical support

- Replacement or refund for products not performing as stated on the datasheet
- Valid for 12 months from date of delivery
- Response to your inquiry within 24 hours

- We provide support in Chinese, English, French, German, Japanese and Spanish
- Extensive multi-media technical resources to help you
- We investigate all quality concerns to ensure our products perform to the highest standards

If the product does not perform as described on this datasheet, we will offer a refund or replacement. For full details of the Abpromise, please visit <https://www.abcam.com/abpromise> or contact our technical team.

Terms and conditions

- Guarantee only valid for products bought direct from Abcam or one of our authorized distributors