

Product datasheet

Anti-LSM1 antibody ab37463

1 Image

Overview

Product name	Anti-LSM1 antibody
Description	Chicken polyclonal to LSM1
Host species	Chicken
Specificity	Binds specifically to the 3'-terminal U-tract of U6 snRNA LSm subunits form a heteromer with a donut shape.
Tested applications	Suitable for: WB
Species reactivity	Reacts with: Mouse, Rat, Human
Immunogen	Full length native protein (purified) (Human) LSM1
Positive control	E coli-derived fusion protein.
General notes	<p>Reproducibility is key to advancing scientific discovery and accelerating scientists' next breakthrough.</p> <p>Abcam is leading the way with our range of recombinant antibodies, knockout-validated antibodies and knockout cell lines, all of which support improved reproducibility.</p> <p>We are also planning to innovate the way in which we present recommended applications and species on our product datasheets, so that only applications & species that have been tested in our own labs, our suppliers or by selected trusted collaborators are covered by our Abpromise™ guarantee.</p> <p>In preparation for this, we have started to update the applications & species that this product is Abpromise guaranteed for.</p> <p>We are also updating the applications & species that this product has been "predicted to work with," however this information is not covered by our Abpromise guarantee.</p> <p>Applications & species from publications and Abreviews that have not been tested in our own labs or in those of our suppliers are not covered by the Abpromise guarantee.</p> <p>Please check that this product meets your needs before purchasing. If you have any questions, special requirements or concerns, please send us an inquiry and/or contact our Support team ahead of purchase. Recommended alternatives for this product can be found below, as well as customer reviews and Q&As.</p>

Properties

Form	Liquid
Storage instructions	Shipped at 4°C. Store at +4°C short term (1-2 weeks). Upon delivery aliquot. Store at -20°C long term.
Storage buffer	Constituent: PBS
Purity	Immunogen affinity purified
Clonality	Polyclonal
Isotype	IgY

Applications

Our [Abpromise guarantee](#) covers the use of **ab37463** in the following tested applications.

The application notes include recommended starting dilutions; optimal dilutions/concentrations should be determined by the end user.

Application	Abreviews	Notes
-------------	-----------	-------

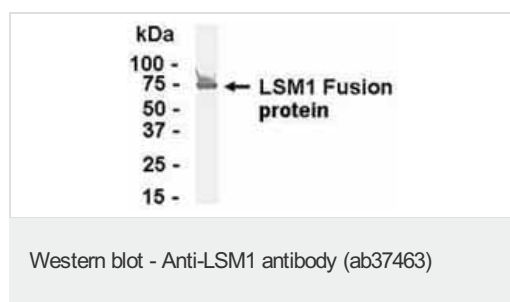
WB

Application notes	<p>WB: 1/2000. Predicted molecular weight: 15 kDa.</p> <p>We recommend using about 2.5 ug of positive control protein in the colorimetric method, and about 10x less for ECL detection.</p> <p>Not yet tested in other applications.</p> <p>Optimal dilutions/concentrations should be determined by the end user.</p>
--------------------------	--

Target

Function	Plays a role in replication-dependent histone mRNA degradation. Binds specifically to the 3'-terminal U-tract of U6 snRNA.
Tissue specificity	Has elevated expression in pancreatic cancer and in several cancer-derived cell lines.
Sequence similarities	Belongs to the snRNP Sm proteins family.
Cellular localization	Nucleus.

Images



Anti-LSM1 antibody (ab37463) at 1/2000 dilution + E coli-derived fusion protein

Secondary

Goat anti-IgY-HRP at 1/1000 dilution

Predicted band size: 15 kDa

Observed band size: 75 kDa

[why is the actual band size different from the predicted?](#)

Band size difference is due to the fact that this western blot represents a fusion protein.

Please note: All products are "FOR RESEARCH USE ONLY. NOT FOR USE IN DIAGNOSTIC PROCEDURES"

Our Abpromise to you: Quality guaranteed and expert technical support

- Replacement or refund for products not performing as stated on the datasheet
- Valid for 12 months from date of delivery
- Response to your inquiry within 24 hours

- We provide support in Chinese, English, French, German, Japanese and Spanish
- Extensive multi-media technical resources to help you
- We investigate all quality concerns to ensure our products perform to the highest standards

If the product does not perform as described on this datasheet, we will offer a refund or replacement. For full details of the Abpromise, please visit <https://www.abcam.com/abpromise> or contact our technical team.

Terms and conditions

- Guarantee only valid for products bought direct from Abcam or one of our authorized distributors