


Product datasheet

Anti-LSM4 antibody ab153959

2 Images

Overview

Product name	Anti-LSM4 antibody
Description	Rabbit polyclonal to LSM4
Host species	Rabbit
Tested applications	Suitable for: WB, ICC/IF
Species reactivity	Reacts with: Human Predicted to work with: Mouse, Rat, Cow, Dog, Xenopus laevis, Xenopus tropicalis 
Immunogen	Recombinant fragment, corresponding to a region within amino acids 1-139 of Human LSM4 (Uniprot ID Q9Y4Z0).
Positive control	Recombinant Human LSM4 protein (ab101871) can be used as a positive control in WB. A549 whole cell lysate; HepG2 and HCT116 cell lines; HeLa cells.

Properties

Form	Liquid
Storage instructions	Shipped at 4°C. Upon delivery aliquot. Store at -20°C or -80°C. Avoid freeze / thaw cycle.
Storage buffer	pH: 7.00 Preservative: 0.025% Proclin Constituents: PBS, 20% Glycerol
Purity	Immunogen affinity purified
Clonality	Polyclonal
Isotype	IgG

Applications

Our [Abpromise guarantee](#) covers the use of **ab153959** in the following tested applications.

The application notes include recommended starting dilutions; optimal dilutions/concentrations should be determined by the end user.

Application	Abreviews	Notes
WB		1/500 - 1/3000. Predicted molecular weight: 15 kDa.

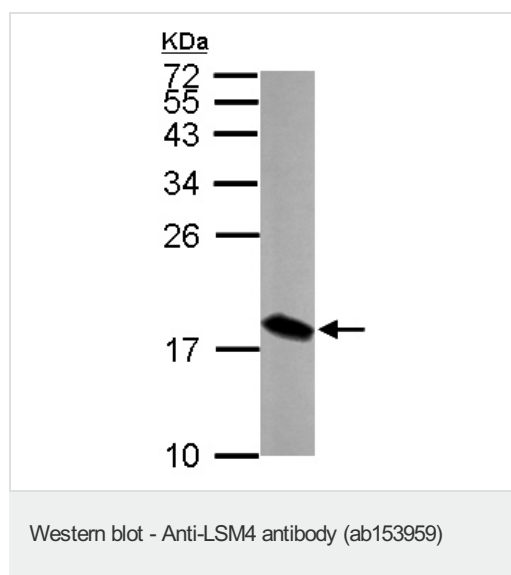
Application	Abreviews	Notes
ICC/IF		1/100 - 1/1000.

Target

Relevance Sm like proteins were identified in a variety of organisms based on sequence homology with the Sm protein family. Sm like proteins contain the Sm sequence motif, which consists of 2 regions separated by a linker of variable length that folds as a loop. The Sm like proteins are thought to form a stable heteromer present in tri snRNP particles, which are important for pre mRNA splicing.

Cellular localization Nuclear

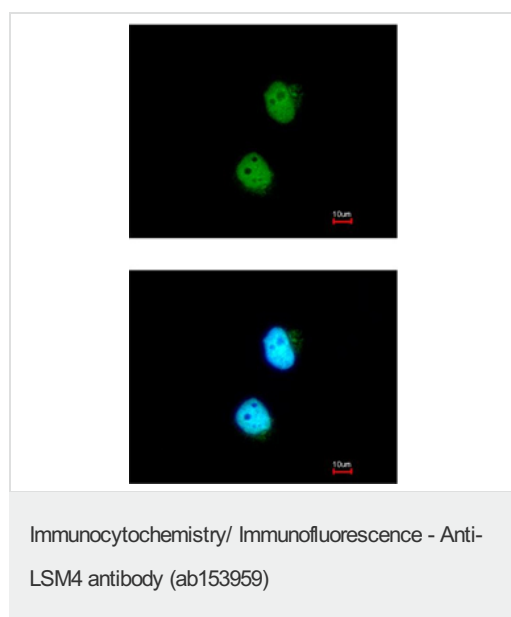
Images



Anti-LSM4 antibody (ab153959) at 1/1000 dilution + A549 whole cell lysate at 30 µg

Predicted band size: 15 kDa

15% SDS PAGE



Immunofluorescence analysis of paraformaldehyde-fixed HeLa, labeling LSM4 with ab153959 at 1/200 dilution. Blue: Hoechst 33342 staining.

Please note: All products are "FOR RESEARCH USE ONLY. NOT FOR USE IN DIAGNOSTIC PROCEDURES"

Our Abpromise to you: Quality guaranteed and expert technical support

- Replacement or refund for products not performing as stated on the datasheet
- Valid for 12 months from date of delivery
- Response to your inquiry within 24 hours

- We provide support in Chinese, English, French, German, Japanese and Spanish
- Extensive multi-media technical resources to help you
- We investigate all quality concerns to ensure our products perform to the highest standards

If the product does not perform as described on this datasheet, we will offer a refund or replacement. For full details of the Abpromise, please visit <https://www.abcam.com/abpromise> or contact our technical team.

Terms and conditions

- Guarantee only valid for products bought direct from Abcam or one of our authorized distributors