

Product datasheet

Anti-LSP1 antibody [EPR3160] ab134099

Recombinant **RabMAb**

[7 Images](#)

Overview

Product name	Anti-LSP1 antibody [EPR3160]
Description	Rabbit monoclonal [EPR3160] to LSP1
Host species	Rabbit
Tested applications	Suitable for: WB, IHC-P Unsuitable for: Flow Cyt, ICC or IP
Species reactivity	Reacts with: Human
Immunogen	Synthetic peptide within Human LSP1 aa 50-150 (internal sequence). The exact sequence is proprietary.
Positive control	Daudi, Ramos, HuT-78, U937 and K562 cell lysates; Human tonsil tissue
General notes	Mouse, Rat: We have preliminary internal testing data to indicate this antibody may not react with these species. Please contact us for more information.

Our RabMAb[®] technology is a patented hybridoma-based technology for making rabbit monoclonal antibodies. For details on our patents, please refer to [RabMAb[®] patents](#).

This product is a [recombinant rabbit monoclonal antibody](#).

Properties

Form	Liquid
Storage instructions	Shipped at 4°C. Store at -20°C. Stable for 12 months at -20°C.
Storage buffer	pH: 7.40 Preservative: 0.05% Sodium azide Constituents: 0.1% BSA, 40% Glycerol, 9.85% Tris glycine, 50% Tissue culture supernatant
Purity	Tissue culture supernatant
Clonality	Monoclonal
Clone number	EPR3160
Isotype	IgG

Applications

Our [Abpromise guarantee](#) covers the use of **ab134099** in the following tested applications.

The application notes include recommended starting dilutions; optimal dilutions/concentrations should be determined by the end user.

Application	Abreviews	Notes
WB		1/1000 - 1/10000. Predicted molecular weight: 37 kDa.
IHC-P		1/100 - 1/250. Perform heat mediated antigen retrieval with citrate buffer pH 6 before commencing with IHC staining protocol.

Application notes Is unsuitable for Flow Cyt, ICC or IP.

Target

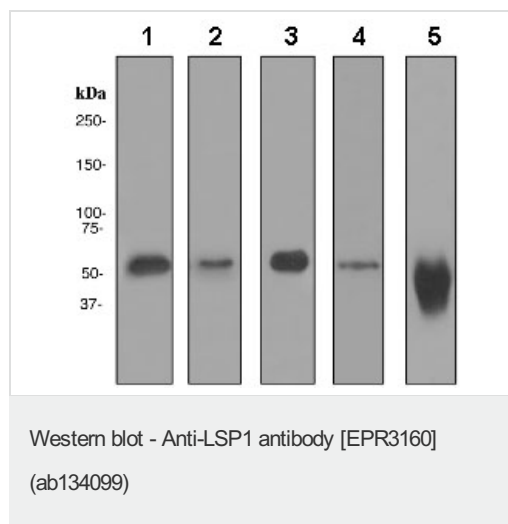
Function May play a role in mediating neutrophil activation and chemotaxis.

Tissue specificity Activated T-lymphocytes.

Post-translational modifications Phosphorylated by casein kinase II, protein kinase C and MAPKAPK2. Phosphorylation by PKC induces translocation from membrane to cytoplasm. Phosphorylation by MAPKAPK2 may regulate neutrophil chemotaxis.

Cellular localization Cell membrane.

Images



All lanes : Anti-LSP1 antibody [EPR3160] (ab134099) at 1/1000 dilution

Lane 1 : Daudi cell lysate

Lane 2 : Ramos cell lysate

Lane 3 : HuT-7 cell lysate

Lane 4 : U937 cell lysate

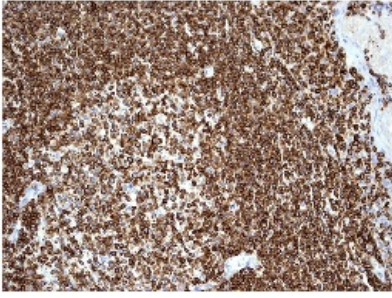
Lane 5 : K562 cell lysate

Lysates/proteins at 10 µg per lane.

Secondary

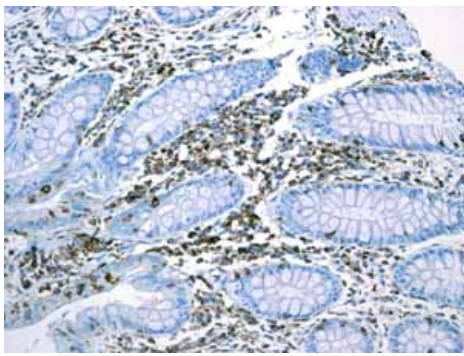
All lanes : HRP labelled goat anti-rabbit at 1/2000 dilution

Predicted band size: 37 kDa



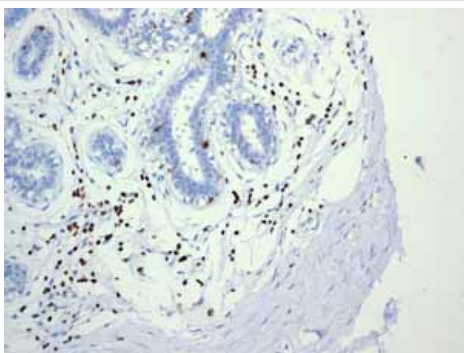
Immunohistochemistry (Formalin/PFA-fixed paraffin-embedded sections) - Anti-LSP1 antibody [EPR3160] (ab134099)

Immunohistochemical analysis of paraffin-embedded Human tonsil tissue labelling LSP1 with ab134099 at 1/100 dilution.



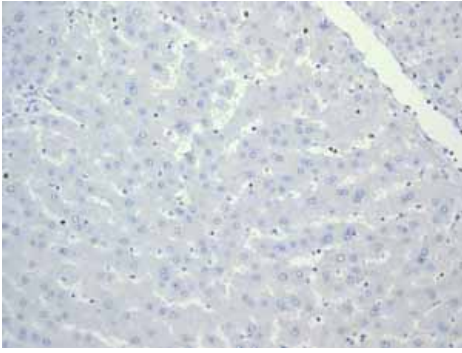
Immunohistochemistry (Formalin/PFA-fixed paraffin-embedded sections) - Anti-LSP1 antibody [EPR3160] (ab134099)

Immunohistochemical analysis of paraffin embedded normal Human colon lymphocytes tissue using ab134099 showing +ve staining.



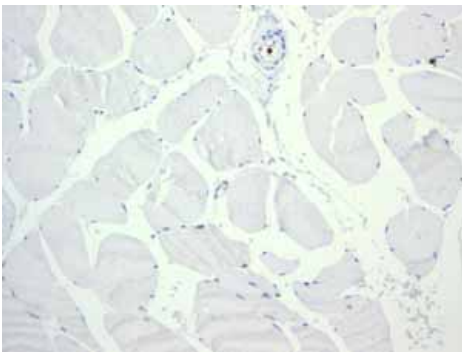
Immunohistochemistry (Formalin/PFA-fixed paraffin-embedded sections) - Anti-LSP1 antibody [EPR3160] (ab134099)

Immunohistochemical analysis of paraffin embedded normal Human breast lymphocytes tissue using ab134099 showing +ve staining.



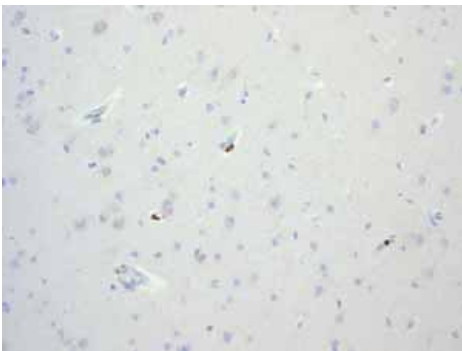
Immunohistochemistry (Formalin/PFA-fixed paraffin-embedded sections) - Anti-LSP1 antibody
[EPR3160] (ab134099)

Immunohistochemical analysis of paraffin embedded normal Human liver tissue using ab134099 showing -ve staining.



Immunohistochemistry (Formalin/PFA-fixed paraffin-embedded sections) - Anti-LSP1 antibody
[EPR3160] (ab134099)

Immunohistochemical analysis of paraffin embedded Human Skeletal muscle tissue using ab134099 showing -ve staining.



Immunohistochemistry (Formalin/PFA-fixed paraffin-embedded sections) - Anti-LSP1 antibody
[EPR3160] (ab134099)

Immunohistochemical analysis of paraffin embedded normal Human brain tissue using ab134099 showing -ve staining.

Our Abpromise to you: Quality guaranteed and expert technical support

- Replacement or refund for products not performing as stated on the datasheet
- Valid for 12 months from date of delivery
- Response to your inquiry within 24 hours

- We provide support in Chinese, English, French, German, Japanese and Spanish
- Extensive multi-media technical resources to help you
- We investigate all quality concerns to ensure our products perform to the highest standards

If the product does not perform as described on this datasheet, we will offer a refund or replacement. For full details of the Abpromise, please visit <https://www.abcam.com/abpromise> or contact our technical team.

Terms and conditions

- Guarantee only valid for products bought direct from Abcam or one of our authorized distributors