

Product datasheet

Anti-LT subunit (A + B) antibody ab188541

2 References 2 Images

Overview

Product name	Anti-LT subunit (A + B) antibody
Description	Rabbit polyclonal to LT subunit (A + B)
Host species	Rabbit
Specificity	ab188541 reacts with LT and cholera toxin.
Tested applications	Suitable for: WB, IP
Species reactivity	Reacts with: Species independent
Immunogen	Full length native protein (purified) corresponding to Escherichia coli LT subunit (A + B). Initial immunization with LT toxoid and booster with LT toxin. Database link: P06717

General notes

The Life Science industry has been in the grips of a reproducibility crisis for a number of years. Abcam is leading the way in addressing this with our range of recombinant monoclonal antibodies and knockout edited cell lines for gold-standard validation. Please check that this product meets your needs before purchasing.

If you have any questions, special requirements or concerns, please send us an inquiry and/or contact our Support team ahead of purchase. Recommended alternatives for this product can be found below, along with publications, customer reviews and Q&As

Properties

Form	Liquid
Storage instructions	Shipped at 4°C. Store at +4°C short term (1-2 weeks). Upon delivery aliquot. Store at -20°C long term. Avoid freeze / thaw cycle.
Storage buffer	pH: 6 Preservative: 0.09% Sodium azide
Purity	Whole antiserum
Clonality	Polyclonal
Isotype	IgG

Applications

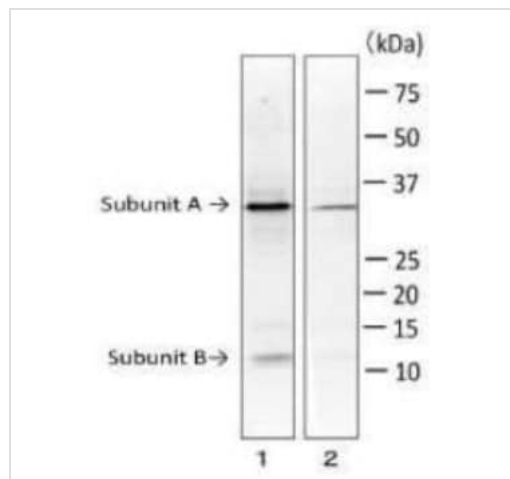
The Abpromise guarantee

Our [Abpromise guarantee](#) covers the use of ab188541 in the following tested applications.

The application notes include recommended starting dilutions; optimal dilutions/concentrations should be determined by the end user.

Application	Abreviews	Notes
WB		1/2000 - 1/10000. Predicted molecular weight: 30 kDa.
IP		Use at an assay dependent concentration.

Images



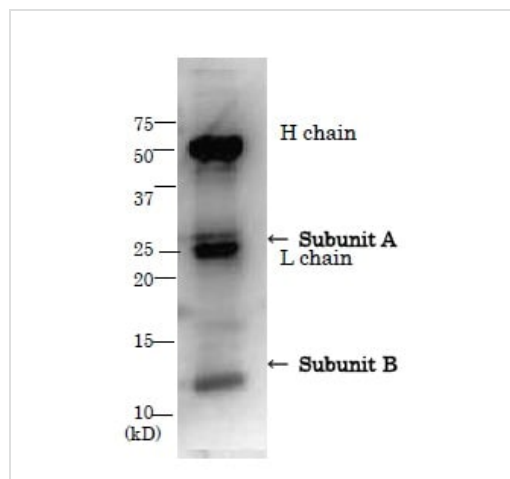
Western blot - Anti-LT subunit (A + B) antibody (ab188541)

Lane 1 : Anti-LT subunit (A + B) antibody (ab188541)

Lane 2 : Anti-E. coli heat labile toxin A antibody [EC01] ([ab243105](#))

All lanes : Culture medium of E. coli (ETEC, LT+)

Predicted band size: 30 kDa



Immunoprecipitation - Anti-LT subunit (A + B) antibody (ab188541)

Immunoprecipitation of LT from culture medium of ETEC by using ab188541. H chain and L chain indicate heavy chain and light chain of IgG, respectively.

Please note: All products are "FOR RESEARCH USE ONLY. NOT FOR USE IN DIAGNOSTIC PROCEDURES"

Our Abpromise to you: Quality guaranteed and expert technical support

- Replacement or refund for products not performing as stated on the datasheet
- Valid for 12 months from date of delivery
- Response to your inquiry within 24 hours

- We provide support in Chinese, English, French, German, Japanese and Spanish
- Extensive multi-media technical resources to help you
- We investigate all quality concerns to ensure our products perform to the highest standards

If the product does not perform as described on this datasheet, we will offer a refund or replacement. For full details of the Abpromise, please visit <https://www.abcam.com/abpromise> or contact our technical team.

Terms and conditions

- Guarantee only valid for products bought direct from Abcam or one of our authorized distributors