

## Product datasheet

# Anti-LTV1 antibody ab122100

★★★★★ 1 Abreviews 1 References 3 Images

### Overview

---

<b>Product name</b>	Anti-LTV1 antibody
<b>Description</b>	Rabbit polyclonal to LTV1
<b>Host species</b>	Rabbit
<b>Tested applications</b>	<b>Suitable for:</b> IHC-P, WB, ICC/IF
<b>Species reactivity</b>	<b>Reacts with:</b> Human
<b>Immunogen</b>	antigen sequence: LEGSIQVDSN RLQEVLNDDY KEKAENCVKL NTLEPLEDQD LPMNELDESE EEEMITVVLE EAKEKWDCES ICSTYSNLYN HPQLIKYQPK PKQ, corresponding to amino acids of Human LTV1. <a href="#">Run BLAST with ExPASy</a> <a href="#">Run BLAST with NCBI</a>
<b>Positive control</b>	Human placenta tissue; RT 4, U 251 MG and Human tonsil lysates; U 251MG cells.
<b>General notes</b>	<p>Reproducibility is key to advancing scientific discovery and accelerating scientists' next breakthrough.</p> <p>Abcam is leading the way with our range of recombinant antibodies, knockout-validated antibodies and knockout cell lines, all of which support improved reproducibility.</p> <p>We are also planning to innovate the way in which we present recommended applications and species on our product datasheets, so that only applications &amp; species that have been tested in our own labs, our suppliers or by selected trusted collaborators are covered by our Abpromise™ guarantee.</p> <p>In preparation for this, we have started to update the applications &amp; species that this product is Abpromise guaranteed for.</p> <p>We are also updating the applications &amp; species that this product has been “predicted to work with,” however this information is not covered by our Abpromise guarantee.</p> <p>Applications &amp; species from publications and Abreviews that have not been tested in our own labs or in those of our suppliers are not covered by the Abpromise guarantee.</p> <p>Please check that this product meets your needs before purchasing. If you have any questions, special requirements or concerns, please send us an inquiry and/or contact our Support team ahead of purchase. Recommended alternatives for this product can be found below, as well as customer reviews and Q&amp;As.</p>

### Properties

---

<b>Form</b>	Liquid
<b>Storage instructions</b>	Shipped at 4°C. Upon delivery aliquot and store at -20°C. Avoid freeze / thaw cycles.
<b>Storage buffer</b>	pH: 7.20 Preservative: 0.02% Sodium azide Constituents: 59% PBS, 40% Glycerol (glycerin, glycerine)
<b>Purity</b>	Immunogen affinity purified
<b>Clonality</b>	Polyclonal
<b>Isotype</b>	IgG

## Applications

Our [Abpromise guarantee](#) covers the use of **ab122100** in the following tested applications.

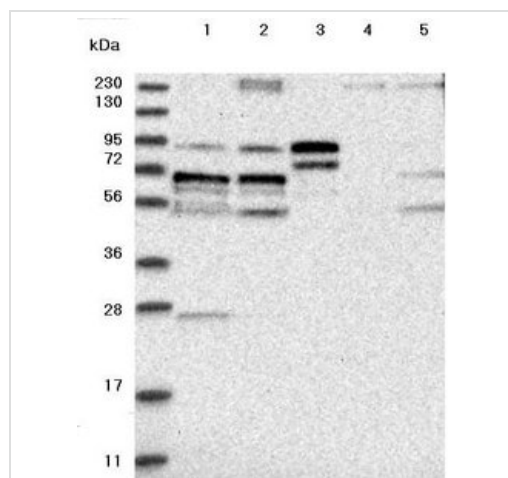
The application notes include recommended starting dilutions; optimal dilutions/concentrations should be determined by the end user.

Application	Abreviews	Notes
IHC-P		1/200 - 1/500. Perform heat mediated antigen retrieval with citrate buffer pH 6 before commencing with IHC staining protocol.
WB	★★★★☆	Use a concentration of 0.04 - 0.4 µg/ml.
ICC/IF		Use a concentration of 0.25 - 2 µg/ml.

## Target

**Sequence similarities** Belongs to the LTV1 family.

## Images



Western blot - Anti-LTV1 antibody (ab122100)

**All lanes** : Anti-LTV1 antibody (ab122100) at 1/250 dilution

**Lane 1** : RT 4 cell line lysate

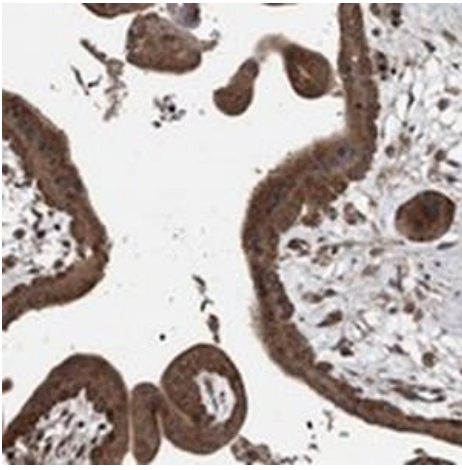
**Lane 2** : U 251 MG cell line lysate

**Lane 3** : Human plasma

**Lane 4** : Human liver tissue lysate

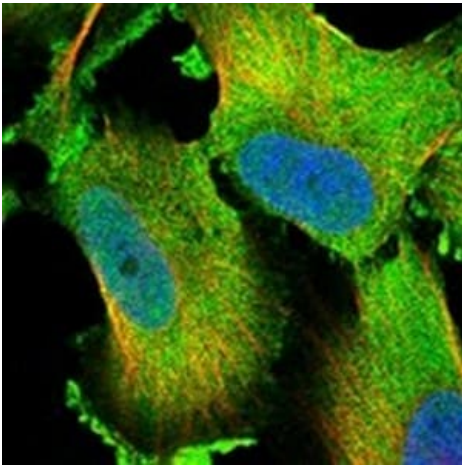
**Lane 5** : Human tonsil tissue lysate

Developed using the ECL technique.



ab122100, at 1/200, staining LTV1 in paraffin embedded Human placenta tissue by Immunohistochemistry.

Immunohistochemistry (Formalin/PFA-fixed paraffin-embedded sections) - Anti-LTV1 antibody (ab122100)



ab122100, at 4 µg/ml, staining LTV1 in PFA/Triton X-100 fixed/permeabilized U 251 MG cells by Immunofluorescence (green).

Immunocytochemistry/ Immunofluorescence - Anti-LTV1 antibody (ab122100)

**Please note:** All products are "FOR RESEARCH USE ONLY. NOT FOR USE IN DIAGNOSTIC PROCEDURES"

### Our Abpromise to you: Quality guaranteed and expert technical support

---

- Replacement or refund for products not performing as stated on the datasheet
- Valid for 12 months from date of delivery
- Response to your inquiry within 24 hours
- We provide support in Chinese, English, French, German, Japanese and Spanish
- Extensive multi-media technical resources to help you
- We investigate all quality concerns to ensure our products perform to the highest standards

If the product does not perform as described on this datasheet, we will offer a refund or replacement. For full details of the Abpromise,

please visit <https://www.abcam.com/abpromise> or contact our technical team.

## **Terms and conditions**

---

- Guarantee only valid for products bought direct from Abcam or one of our authorized distributors