

## Product datasheet

# Anti-Lunatic Fringe antibody [EPR10391(B)] ab151699

Recombinant **RabMAb**

[2 Images](#)

### Overview

---

<b>Product name</b>	Anti-Lunatic Fringe antibody [EPR10391(B)]
<b>Description</b>	Rabbit monoclonal [EPR10391(B)] to Lunatic Fringe
<b>Host species</b>	Rabbit
<b>Tested applications</b>	<b>Suitable for:</b> WB, Flow Cyt <b>Unsuitable for:</b> ICC,IHC-P or IP
<b>Species reactivity</b>	<b>Reacts with:</b> Mouse, Rat, Human
<b>Immunogen</b>	Synthetic peptide, corresponding to residues in Human Lunatic Fringe (UniProt: Q8NES3).
<b>Positive control</b>	PC12, HeLa and K562 cell lysates; K562 cells.
<b>General notes</b>	

Our RabMAb<sup>®</sup> technology is a patented hybridoma-based technology for making rabbit monoclonal antibodies. For details on our patents, please refer to [RabMAb<sup>®</sup> patents](#).

This product is a [recombinant rabbit monoclonal antibody](#).

### Properties

---

<b>Form</b>	Liquid
<b>Storage instructions</b>	Shipped at 4°C. Store at -20°C.
<b>Storage buffer</b>	Preservative: 0.01% Sodium azide Constituents: 9% PBS, 40% Glycerol, 0.05% BSA, 50% Tissue culture supernatant
<b>Purity</b>	Tissue culture supernatant
<b>Clonality</b>	Monoclonal
<b>Clone number</b>	EPR10391(B)
<b>Isotype</b>	IgG

### Applications

---

Our [Abpromise guarantee](#) covers the use of **ab151699** in the following tested applications.

The application notes include recommended starting dilutions; optimal dilutions/concentrations should be determined by the end user.

Application	Abreviews	Notes
WB		1/1000 - 1/10000. Predicted molecular weight: 42 kDa.
Flow Cyt		1/10 - 1/100. <a href="#">ab172730</a> - Rabbit monoclonal IgG, is suitable for use as an isotype control with this antibody.

**Application notes** Is unsuitable for ICC,IHC-P or IP.

## Target

**Function** Glycosyltransferase that initiates the elongation of O-linked fucose residues attached to EGF-like repeats in the extracellular domain of Notch molecules. Decreases the binding of JAGGED1 to NOTCH2 but not that of DELTA1. Essential mediator of somite segmentation and patterning.

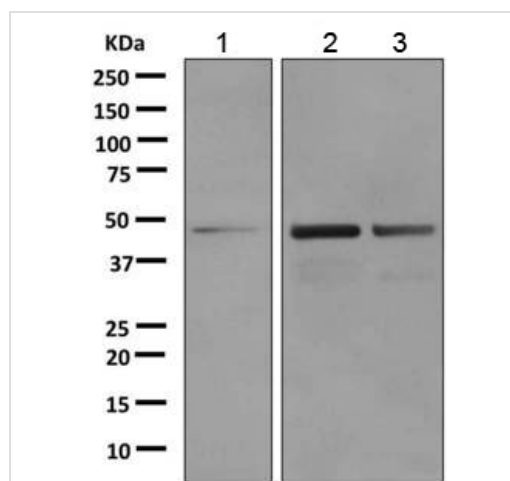
**Involvement in disease** Defects in LFNG are the cause of spondylocostal dysostosis type 3 (SCDO3) [MIM:609813]. An autosomal recessive condition of variable severity associated with vertebral and rib segmentation defects. The main skeletal malformations include fusion of vertebrae, hemivertebrae, fusion of certain ribs, and other rib malformations. Deformity of the chest and spine (severe scoliosis, kyphoscoliosis and lordosis) is a natural consequence of the malformation and leads to a dwarf-like appearance. As the thorax is small, infants frequently have respiratory insufficiency and repeated respiratory infections resulting in life-threatening complications in the first year of life.

**Sequence similarities** Belongs to the glycosyltransferase 31 family.

**Post-translational modifications** A soluble form may be derived from the membrane form by proteolytic processing.

**Cellular localization** Golgi apparatus membrane.

## Images



Western blot - Anti-Lunatic Fringe antibody [EPR10391(B)] (ab151699)

**All lanes** : Anti-Lunatic Fringe antibody [EPR10391(B)] (ab151699) at 1/1000 dilution

**Lane 1** : PC12 cell lysate

**Lane 2** : HeLa cell lysate

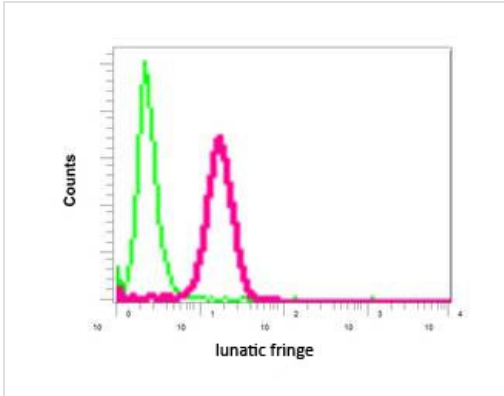
**Lane 3** : K562 cell lysate

Lysates/proteins at 10 µg per lane.

### Secondary

**All lanes** : Goat anti-rabbit HRP at 1/2000 dilution

**Predicted band size:** 42 kDa



Flow Cytometry - Anti-Lunatic Fringe antibody  
[EPR10391(B)] (ab151699)

Flow cytometric analysis of permeabilized K562 cells labeling Lunatic Fringe with ab151699 at 1/10 dilution (red) compared to a nonspecific control antibody (green).

**Please note:** All products are "FOR RESEARCH USE ONLY. NOT FOR USE IN DIAGNOSTIC PROCEDURES"

### Our Abpromise to you: Quality guaranteed and expert technical support

---

- Replacement or refund for products not performing as stated on the datasheet
- Valid for 12 months from date of delivery
- Response to your inquiry within 24 hours
- We provide support in Chinese, English, French, German, Japanese and Spanish
- Extensive multi-media technical resources to help you
- We investigate all quality concerns to ensure our products perform to the highest standards

If the product does not perform as described on this datasheet, we will offer a refund or replacement. For full details of the Abpromise, please visit <https://www.abcam.com/abpromise> or contact our technical team.

### Terms and conditions

---

- Guarantee only valid for products bought direct from Abcam or one of our authorized distributors