

Product datasheet

Anti-LXR alpha antibody [EPR6508(N)] ab176323

Recombinant RabMAb

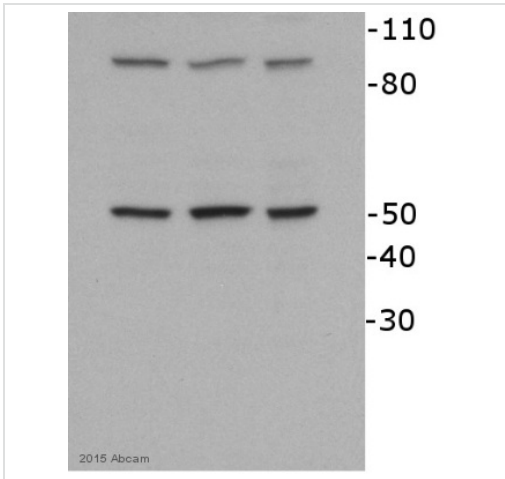
★★★★★ 2 Abreviews 13 References 4 Images

Overview

Product name	Anti-LXR alpha antibody [EPR6508(N)]
Description	Rabbit monoclonal [EPR6508(N)] to LXR alpha
Host species	Rabbit
Tested applications	Suitable for: Flow Cyt, WB, ICC/IF Unsuitable for: IHC-P or IP
Species reactivity	Reacts with: Mouse, Rat, Sheep, Human
Immunogen	Synthetic peptide within Human LXR alpha aa 50-150 (Cysteine residue). The exact sequence is proprietary. Database link: Q13133 (Peptide available as ab191835)
Positive control	Human fetal liver, Jurkat and MCF-7 cell lysates. Jurkat cells and MCF7 cells.
General notes	Our RabMAb [®] technology is a patented hybridoma-based technology for making rabbit monoclonal antibodies. For details on our patents, please refer to RabMAb[®] patents . This product is a recombinant rabbit monoclonal antibody .

Properties

Form	Liquid
Storage instructions	Shipped at 4°C. Store at +4°C short term (1-2 weeks). Upon delivery aliquot. Store at -20°C long term. Avoid freeze / thaw cycle.
Storage buffer	pH: 7.20 Preservative: 0.01% Sodium azide Constituents: 9% PBS, 40% Glycerol, 0.05% BSA, 50% Tissue culture supernatant
Purity	Tissue culture supernatant
Clonality	Monoclonal
Clone number	EPR6508(N)
Isotype	IgG



Western blot - Anti-LXR alpha antibody [EPR6508(N)] (ab176323)

Image is courtesy of an anonymous AbReview.

All lanes : Anti-LXR alpha antibody [EPR6508(N)] (ab176323) at 1/1000 dilution

All lanes : Human SCC61 whole cell lysates

Lysates/proteins at 23 µg per lane.

Secondary

All lanes : Rabbit anti-rabbit polyclonal HRP conjugate at 1/3000 dilution

Developed using the ECL technique.

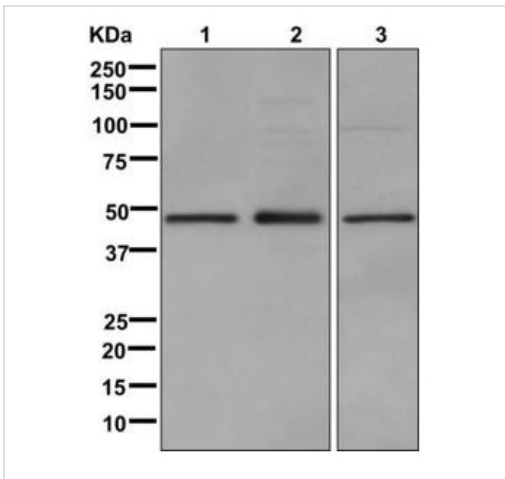
Performed under reducing conditions.

Predicted band size: 50 kDa

Additional bands at: 100 kDa (possible non-specific binding)

Exposure time: 1 second

From left to right lanes 1 - 3. Blocking was done with 5% milk in PBS incubated for 1 hour at 22°C.



Western blot - Anti-LXR alpha antibody [EPR6508(N)] (ab176323)

All lanes : Anti-LXR alpha antibody [EPR6508(N)] (ab176323) at 1/1000 dilution

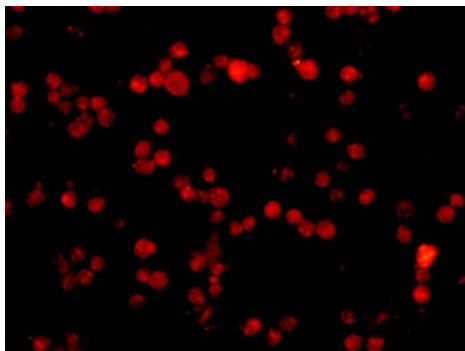
Lane 1 : Human fetal liver lysate

Lane 2 : Jurkat cell lysate

Lane 3 : MCF7 cell lysate

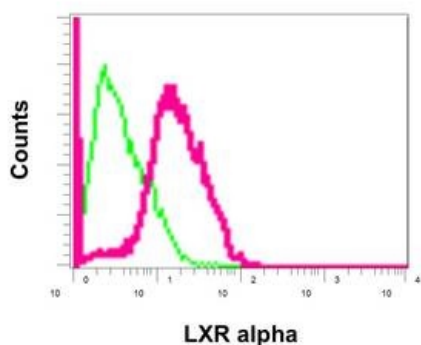
Lysates/proteins at 10 µg per lane.

Predicted band size: 50 kDa



Immunofluorescent staining of Jurkat cells labeling LXR alpha using ab176323 at a 1/50 dilution.

Immunocytochemistry/ Immunofluorescence - Anti-LXR alpha antibody [EPR6508(N)] (ab176323)



Flow cytometric analysis of permeabilized MCF-7 cells labeling LXR alpha using ab176323 at a 1/10 dilution (red) or a rabbit IgG control (green).

Flow Cytometry - Anti-LXR alpha [EPR6508(N)] antibody (ab176323)

Please note: All products are "FOR RESEARCH USE ONLY AND ARE NOT INTENDED FOR DIAGNOSTIC OR THERAPEUTIC USE"

Our Abpromise to you: Quality guaranteed and expert technical support

- Replacement or refund for products not performing as stated on the datasheet
- Valid for 12 months from date of delivery
- Response to your inquiry within 24 hours
- We provide support in Chinese, English, French, German, Japanese and Spanish
- Extensive multi-media technical resources to help you
- We investigate all quality concerns to ensure our products perform to the highest standards

If the product does not perform as described on this datasheet, we will offer a refund or replacement. For full details of the Abpromise, please visit <https://www.abcam.com/abpromise> or contact our technical team.

Terms and conditions

- Guarantee only valid for products bought direct from Abcam or one of our authorized distributors