


Product datasheet

Anti-LXR beta/NER antibody ab117881

1 Image

Overview

<b>Product name</b>	Anti-LXR beta/NER antibody
<b>Description</b>	Rabbit polyclonal to LXR beta/NER
<b>Host species</b>	Rabbit
<b>Tested applications</b>	<b>Suitable for:</b> WB
<b>Species reactivity</b>	<b>Reacts with:</b> Human <b>Predicted to work with:</b> Chimpanzee, Gorilla 
<b>Immunogen</b>	Synthetic peptide corresponding to Human LXR beta/NER aa 1-100 conjugated to keyhole limpet haemocyanin. (Peptide available as <a href="#">ab150450</a> )
<b>Positive control</b>	This antibody gave a positive signal in Human Liver tissue lysate as well as the following whole cell lysates: HeLa; Jurkat; HepG2; A549.

Properties

<b>Form</b>	Liquid
<b>Storage instructions</b>	Shipped at 4°C. Store at +4°C short term (1-2 weeks). Upon delivery aliquot. Store at -20°C or -80°C. Avoid freeze / thaw cycle.
<b>Storage buffer</b>	pH: 7.40 Preservative: 0.02% Sodium azide Constituent: PBS Note: Batches of this product that have a concentration < 1mg/ml may have BSA added as a stabilising agent. If you would like information about the formulation of a specific lot, please contact our scientific support team who will be happy to help.
<b>Purity</b>	Immunogen affinity purified
<b>Clonality</b>	Polyclonal
<b>Isotype</b>	IgG

Applications

Our [Abpromise guarantee](#) covers the use of **ab117881** in the following tested applications.

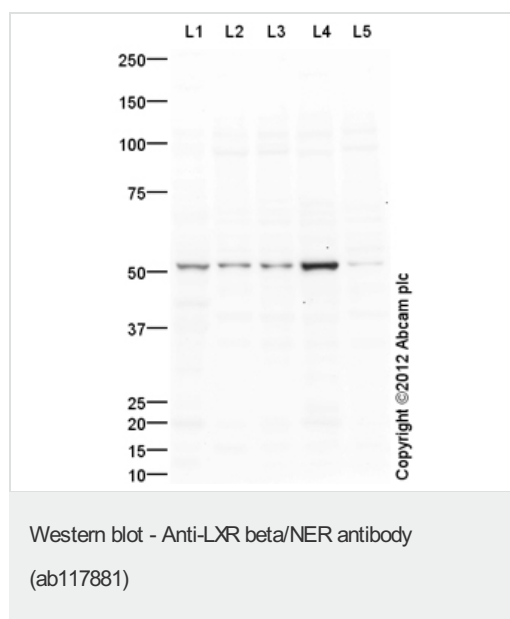
The application notes include recommended starting dilutions; optimal dilutions/concentrations should be determined by the end user.

Application	Abreviews	Notes
WB		Use a concentration of 1 µg/ml. Detects a band of approximately 51 kDa (predicted molecular weight: 51 kDa).

## Target

<b>Function</b>	Orphan receptor. Binds preferentially to double-stranded oligonucleotide direct repeats having the consensus half-site sequence 5'-AGGTCA-3' and 4-nt spacing (DR-4). Regulates cholesterol uptake through MYLIP-dependent ubiquitination of LDLR, VLDLR and LRP8.
<b>Tissue specificity</b>	Ubiquitous.
<b>Sequence similarities</b>	Belongs to the nuclear hormone receptor family. NR1 subfamily. Contains 1 nuclear receptor DNA-binding domain.
<b>Cellular localization</b>	Nucleus.

## Images



**All lanes :** Anti-LXR beta/NER antibody (ab117881) at 1 µg/ml

**Lane 1 :** Human liver tissue lysate - total protein ([ab29889](#))

**Lane 2 :** HeLa (Human epithelial carcinoma cell line) Whole Cell Lysate

**Lane 3 :** Jurkat (Human T cell lymphoblast-like cell line) Whole Cell Lysate

**Lane 4 :** HepG2 (Human hepatocellular liver carcinoma cell line) Whole Cell Lysate

**Lane 5 :** A549 (Human lung adenocarcinoma epithelial cell line) Whole Cell Lysate

Lysates/proteins at 10 µg per lane.

### Secondary

**All lanes :** Goat Anti-Rabbit IgG H&L (HRP) ([ab97051](#)) at 1/10000 dilution

Developed using the ECL technique.

Performed under reducing conditions.

**Predicted band size:** 51 kDa

**Observed band size:** 51 kDa

**Exposure time:** 4 minutes

This blot was produced using a 4-12% Bis-tris gel under the MOPS buffer system. The gel was run at 200V for 50 minutes before being transferred onto a Nitrocellulose membrane at 30V for 70 minutes. The membrane was then blocked for an hour using 5% Bovine Serum Albumin before being incubated with ab117881 overnight at 4°C. Antibody binding was detected using an anti-rabbit antibody conjugated to HRP, and visualised using ECL development solution.

**Please note:** All products are "FOR RESEARCH USE ONLY. NOT FOR USE IN DIAGNOSTIC PROCEDURES"

**Our Abpromise to you: Quality guaranteed and expert technical support**

---

- Replacement or refund for products not performing as stated on the datasheet
- Valid for 12 months from date of delivery
- Response to your inquiry within 24 hours
  
- We provide support in Chinese, English, French, German, Japanese and Spanish
- Extensive multi-media technical resources to help you
- We investigate all quality concerns to ensure our products perform to the highest standards

If the product does not perform as described on this datasheet, we will offer a refund or replacement. For full details of the Abpromise, please visit <https://www.abcam.com/abpromise> or contact our technical team.

**Terms and conditions**

---

- Guarantee only valid for products bought direct from Abcam or one of our authorized distributors