


Product datasheet

Anti-LXR beta/NER antibody ab228867

3 Images

Overview

Product name	Anti-LXR beta/NER antibody
Description	Rabbit polyclonal to LXR beta/NER
Host species	Rabbit
Tested applications	Suitable for: ICC/IF, WB
Species reactivity	Reacts with: Mouse, Human Predicted to work with: Rat, Rabbit, Rhesus monkey 
Immunogen	Recombinant fragment within Human LXR beta/NER (internal sequence). The exact sequence is proprietary. Database link: P55055
Positive control	WB: Mouse brain lysate; HeLa whole cell lysate. ICC/IF: HeLa cells.
General notes	<p>Reproducibility is key to advancing scientific discovery and accelerating scientists' next breakthrough.</p> <p>Abcam is leading the way with our range of recombinant antibodies, knockout-validated antibodies and knockout cell lines, all of which support improved reproducibility.</p> <p>We are also planning to innovate the way in which we present recommended applications and species on our product datasheets, so that only applications & species that have been tested in our own labs, our suppliers or by selected trusted collaborators are covered by our Abpromise™ guarantee.</p> <p>In preparation for this, we have started to update the applications & species that this product is Abpromise guaranteed for.</p> <p>We are also updating the applications & species that this product has been “predicted to work with,” however this information is not covered by our Abpromise guarantee.</p> <p>Applications & species from publications and Abreviews that have not been tested in our own labs or in those of our suppliers are not covered by the Abpromise guarantee.</p> <p>Please check that this product meets your needs before purchasing. If you have any questions, special requirements or concerns, please send us an inquiry and/or contact our Support team ahead of purchase. Recommended alternatives for this product can be found below, as well as customer reviews and Q&As.</p>

Properties

Form	Liquid
Storage instructions	Shipped at 4°C. Store at +4°C short term (1-2 weeks). Upon delivery aliquot. Store at -20°C long term. Avoid freeze / thaw cycle.
Storage buffer	pH: 7.00 Preservative: 0.01% Thimerosal (merthiolate) Constituents: 1.21% Tris, 0.75% Glycine, 20% Glycerol (glycerin, glycerine)
Purity	Immunogen affinity purified
Clonality	Polyclonal
Isotype	IgG

Applications

Our [Abpromise guarantee](#) covers the use of **ab228867** in the following tested applications.

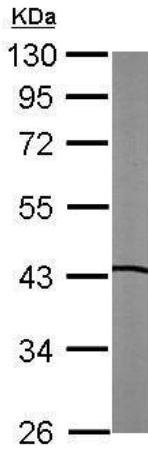
The application notes include recommended starting dilutions; optimal dilutions/concentrations should be determined by the end user.

Application	Abreviews	Notes
ICC/IF		1/100 - 1/1000.
WB		1/500 - 1/3000. Predicted molecular weight: 50 kDa.

Target

Function	Orphan receptor. Binds preferentially to double-stranded oligonucleotide direct repeats having the consensus half-site sequence 5'-AGGTCA-3' and 4-nt spacing (DR-4). Regulates cholesterol uptake through MYLIP-dependent ubiquitination of LDLR, VLDLR and LRP8.
Tissue specificity	Ubiquitous.
Sequence similarities	Belongs to the nuclear hormone receptor family. NR1 subfamily. Contains 1 nuclear receptor DNA-binding domain.
Cellular localization	Nucleus.

Images

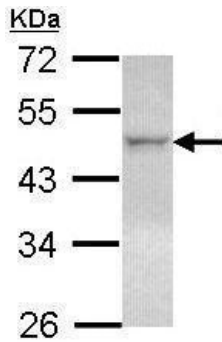


Western blot - Anti-LXR beta/NER antibody (ab228867)

Anti-LXR beta/NER antibody (ab228867) at 1/1000 dilution +
 Mouse brain lysate at 50 µg

Predicted band size: 50 kDa

10% SDS-PAGE gel.

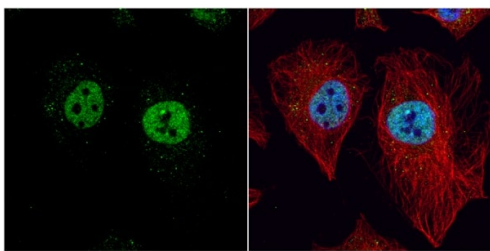


Western blot - Anti-LXR beta/NER antibody (ab228867)

Anti-LXR beta/NER antibody (ab228867) at 1/1000 dilution + HeLa
 (human epithelial cell line from cervix adenocarcinoma) whole cell
 lysate at 30 µg

Predicted band size: 50 kDa

10% SDS-PAGE gel.



Immunocytochemistry/ Immunofluorescence - Anti-LXR beta/NER antibody (ab228867)

4% paraformaldehyde-fixed HeLa (human epithelial cell line from cervix adenocarcinoma) cells stained for LXR beta/NER (green) using ab228867 at 1/200 dilution in ICC/IF.

Nuclear counterstain: Hoechst 33342 (blue). Alpha Tubulin, a cytoskeleton marker, is detected with an alpha Tubulin antibody (red).

Please note: All products are "FOR RESEARCH USE ONLY. NOT FOR USE IN DIAGNOSTIC PROCEDURES"

Our Abpromise to you: Quality guaranteed and expert technical support

- Replacement or refund for products not performing as stated on the datasheet
- Valid for 12 months from date of delivery
- Response to your inquiry within 24 hours

- We provide support in Chinese, English, French, German, Japanese and Spanish
- Extensive multi-media technical resources to help you
- We investigate all quality concerns to ensure our products perform to the highest standards

If the product does not perform as described on this datasheet, we will offer a refund or replacement. For full details of the Abpromise, please visit <https://www.abcam.com/abpromise> or contact our technical team.

Terms and conditions

- Guarantee only valid for products bought direct from Abcam or one of our authorized distributors