

Product datasheet

Anti-Ly6c antibody [HK1.4] ab24973

★★★★☆ 2 Abreviews 5 References 1 Image

Overview

Product name	Anti-Ly6c antibody [HK1.4]
Description	Rat monoclonal [HK1.4] to Ly6c
Host species	Rat
Tested applications	Suitable for: Flow Cyt
Species reactivity	Reacts with: Mouse
Immunogen	Tissue, cells or virus corresponding to Ly6c. L3 cloned CTL cells
General notes	<p>The Life Science industry has been in the grips of a reproducibility crisis for a number of years. Abcam is leading the way in addressing this with our range of recombinant monoclonal antibodies and knockout edited cell lines for gold-standard validation. Please check that this product meets your needs before purchasing.</p> <p>If you have any questions, special requirements or concerns, please send us an inquiry and/or contact our Support team ahead of purchase. Recommended alternatives for this product can be found below, along with publications, customer reviews and Q&As</p>

Properties

Form	Liquid
Storage instructions	Shipped at 4°C. Upon delivery aliquot and store at -20°C or -80°C. Avoid repeated freeze / thaw cycles.
Storage buffer	pH: 8.2
Purity	Affinity purified
Clonality	Monoclonal
Clone number	HK1.4
Isotype	IgG2c
Light chain type	kappa

Applications

The Abpromise guarantee Our [Abpromise guarantee](#) covers the use of ab24973 in the following tested applications. The application notes include recommended starting dilutions; optimal dilutions/concentrations should be determined by the end user.

Application	Abreviews	Notes
Flow Cyt		

Application notes

Cellular activation: Use at an assay dependent dilution.

Flow Cyt: Use 1µg for 10⁶ cells.

IHC-Fr: Use at an assay dependent dilution.

Not yet tested in other applications.

Optimal dilutions/concentrations should be determined by the end user.

Target

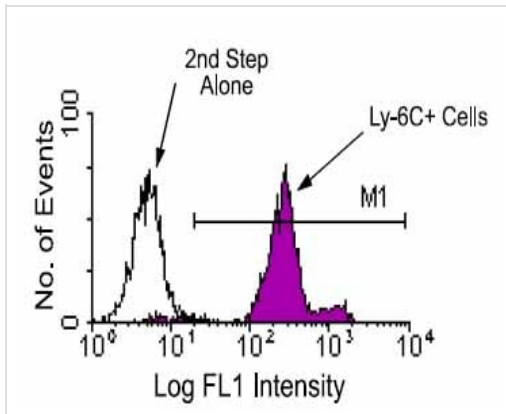
Relevance

Ly6C is a monocyte/macrophage and endothelial cell differentiation antigen regulated by interferon gamma, and may play a role in the development and maturation of lymphocytes. It is a member of the Ly6 multigene family of type V glycoposphatidylinositol anchored cell surface proteins. It is expressed on bone marrow cells, monocytes/macrophages, neutrophils, endothelial cells, and T cell subsets. Mice with the Ly6.2 allotype (e.g., AKR, C57BL, C57BR, C57L, DBA/2, PL, SJL, SWR, 129) have subsets of CD4+Ly6C+ and CD8+Ly6C+ cells, while Ly6.1 strains (e.g., A, BALB/c, CBA, C3H/He, DBA/1, NZB) have only CD8+Ly6C+ lymphocytes.

Cellular localization

Cell membrane; Lipid-anchor, GPI-anchor.

Images



Bone marrow cells from C57BL/6 mice were labeled with ab24973 and then stained with goat anti-rat IgG-FITC. Large cells were gated and analyzed by flow cytometry.

Flow Cytometry - Anti-Ly6c antibody [HK1.4] (ab24973)

Please note: All products are "FOR RESEARCH USE ONLY. NOT FOR USE IN DIAGNOSTIC PROCEDURES"

Our Abpromise to you: Quality guaranteed and expert technical support

- Replacement or refund for products not performing as stated on the datasheet
- Valid for 12 months from date of delivery

- Response to your inquiry within 24 hours
- We provide support in Chinese, English, French, German, Japanese and Spanish
- Extensive multi-media technical resources to help you
- We investigate all quality concerns to ensure our products perform to the highest standards

If the product does not perform as described on this datasheet, we will offer a refund or replacement. For full details of the Abpromise, please visit <https://www.abcam.com/abpromise> or contact our technical team.

Terms and conditions

- Guarantee only valid for products bought direct from Abcam or one of our authorized distributors