

Product datasheet

Anti-LYPD3 antibody [EPR9107] ab151709

Recombinant RabMAb

3 References 6 Images

Overview

Product name	Anti-LYPD3 antibody [EPR9107]
Description	Rabbit monoclonal [EPR9107] to LYPD3
Host species	Rabbit
Tested applications	Suitable for: WB, IHC-P, IP
Species reactivity	Reacts with: Human
Immunogen	Synthetic peptide within Human LYPD3. The exact sequence is proprietary.
Positive control	BxPC3, HACAT cell lysates, Human skin tissue, Human esophagus lysates.
General notes	Mouse, Rat: We have preliminary internal testing data to indicate this antibody may not react with these species. Please contact us for more information.

This product is a recombinant monoclonal antibody, which offers several advantages including:

- High batch-to-batch consistency and reproducibility
- Improved sensitivity and specificity
- Long-term security of supply
- Animal-free production

For more information [see here](#).

Our RabMAb[®] technology is a patented hybridoma-based technology for making rabbit monoclonal antibodies. For details on our patents, please refer to [RabMAb[®] patents](#).

We are constantly working hard to ensure we provide our customers with best in class antibodies. As a result of this work we are pleased to now offer this antibody in purified format. We are in the process of updating our datasheets. The purified format is designated 'PUR' on our product labels. If you have any questions regarding this update, please contact our Scientific Support team.

Reproducibility is key to advancing scientific discovery and accelerating scientists' next breakthrough.

Abcam is leading the way with our range of recombinant antibodies, knockout-validated antibodies and knockout cell lines, all of which support improved reproducibility.

We are also planning to innovate the way in which we present recommended applications and species on our product datasheets, so that only applications & species that have been tested in our own labs, our suppliers or by selected trusted collaborators are covered by our Abpromise[™] guarantee.

In preparation for this, we have started to update the applications & species that this product is Abpromise guaranteed for.

We are also updating the applications & species that this product has been “predicted to work with,” however this information is not covered by our Abpromise guarantee.

Applications & species from publications and Abreviews that have not been tested in our own labs or in those of our suppliers are not covered by the Abpromise guarantee.

Please check that this product meets your needs before purchasing. If you have any questions, special requirements or concerns, please send us an inquiry and/or contact our Support team ahead of purchase. Recommended alternatives for this product can be found below, as well as customer reviews and Q&As.

Properties

Form	Liquid
Storage instructions	Shipped at 4°C. Store at +4°C short term (1-2 weeks). Upon delivery aliquot. Store at -20°C. Avoid freeze / thaw cycle.
Storage buffer	Preservative: 0.01% Sodium azide Constituents: 40% Glycerol (glycerin, glycerine), 0.05% BSA, 59% PBS
Purity	Protein A purified
Clonality	Monoclonal
Clone number	EPR9107
Isotype	IgG

Applications

Our [Abpromise guarantee](#) covers the use of **ab151709** in the following tested applications.

The application notes include recommended starting dilutions; optimal dilutions/concentrations should be determined by the end user.

Application	Abreviews	Notes
WB		1/1000. Predicted molecular weight: 36 kDa.
IHC-P		1/1000. Perform heat mediated antigen retrieval before commencing with IHC staining protocol. For unpurified use at 1/100 - 1/250.
IP		1/10 - 1/100.

Target

Function	Supports cell migration. May be involved in urothelial cell-matrix interactions. May be involved in tumor progression.
Tissue specificity	Expressed in placenta, skin and urothelium. Found in suprabasal keratinocytes of chronic wounds. Weak expression is found in esophagus and peripheral blood mononuclear cells. Found in the majority of primary and metastatic transitional cell carcinomas (TCCs) and as well in breast

cancer tissues, but not in adjacent normal tissues. High expression is found in the tumor component of some noninvasive superficial lesions and in invasive and metastatic urothelial cancers.

Sequence similarities

Contains 2 UPAR/Ly6 domains.

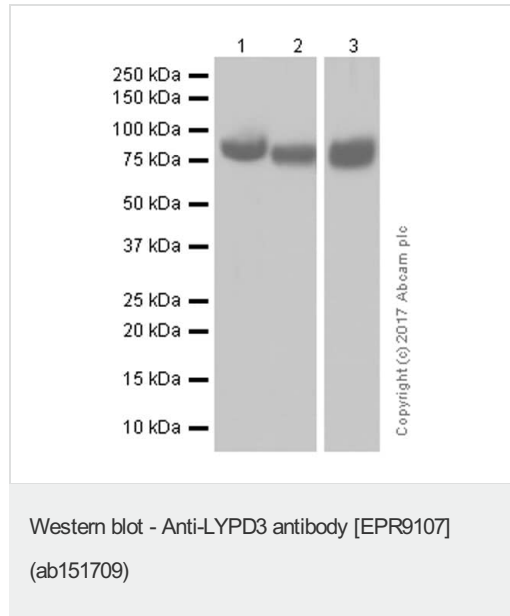
Post-translational modifications

N-glycosylated and O-glycosylated.

Cellular localization

Cell membrane.

Images



All lanes : Anti-LYPD3 antibody [EPR9107] (ab151709) at 1/1000 dilution (purified)

Lane 1 : HaCaT (Human skin keratinocyte) whole cell lysates

Lane 2 : BxPC-3 (Human pancreas adenocarcinoma epithelial cell) whole cell lysates

Lane 3 : Human esophagus lysates

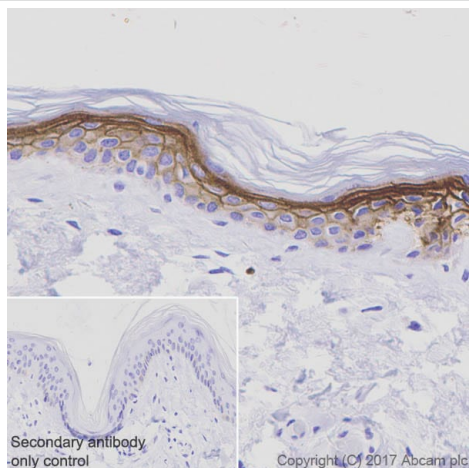
Lysates/proteins at 20 µg per lane.

Secondary

All lanes : Anti-Rabbit IgG (HRP), specific to the non-reduced form of IgG at 1/5000 dilution

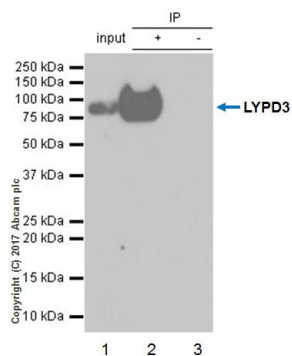
Predicted band size: 36 kDa

Blocking and diluting buffer: 5% NFDN/TBST



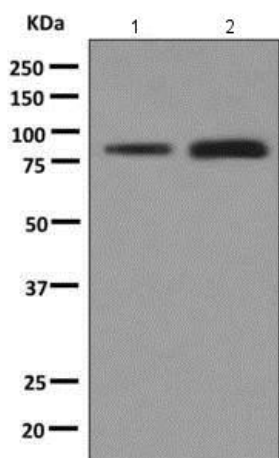
Immunohistochemistry (Formalin/PFA-fixed paraffin-embedded sections) - Anti-LYPD3 antibody [EPR9107] (ab151709)

Immunohistochemistry (Formalin/PFA-fixed paraffin-embedded sections) analysis of human skin tissue sections labeling LYPD3 with Purified ab151709 at 1:1000 dilution (1.01 µg/ml). Heat mediated antigen retrieval was performed using [ab93684](#) (Tris/EDTA buffer, pH 9.0). Tissue was counterstained with Hematoxylin. ImmunoHistoProbe one step HRP Polymer (ready to use) secondary antibody was used at 1:0 dilution. PBS instead of the primary antibody was used as the negative control.



Immunoprecipitation - Anti-LYPD3 antibody [EPR9107] (ab151709)

ab151709 (purified) at 1:50 dilution (2ug) immunoprecipitating LYPD3 in HaCaT (Human skin keratinocyte) whole cell lysate.
Lane 1 (input): HaCaT (Human skin keratinocyte) whole cell lysate 10ug
Lane 2 (+): ab151709 & HaCaT (Human skin keratinocyte) whole cell lysate
Lane 3 (-): Rabbit monoclonal IgG ([ab172730](#)) instead of ab151709 in HaCaT (Human skin keratinocyte) whole cell lysate
 For western blotting, VeriBlot for IP Detection Reagent (HRP) ([ab131366](#)) was used for detection at 1:1000 dilution.
 Blocking and diluting buffer: 5% NFDm/TBST.



Western blot - Anti-LYPD3 antibody [EPR9107] (ab151709)

All lanes : Anti-LYPD3 antibody [EPR9107] (ab151709) at 1/1000 dilution (unpurified)

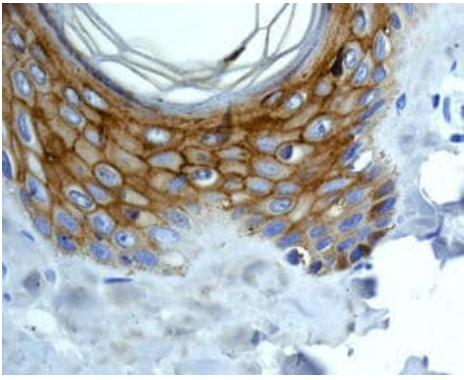
Lane 1 : BxPC3 cell lysate
Lane 2 : HACAT cell lysate

Lysates/proteins at 10 µg per lane.

Secondary

All lanes : Goat anti-rabbit HRP at 1/2000 dilution

Predicted band size: 36 kDa



Immunohistochemical analysis of paraffin-embedded Human skin tissue labeling LYPD3 with unpurified ab151709 at 1/100 dilution.

Perform heat mediated antigen retrieval before commencing with IHC staining protocol.

Immunohistochemistry (Formalin/PFA-fixed paraffin-embedded sections) - Anti-LYPD3 antibody [EPR9107] (ab151709)

Why choose a recombinant antibody?



Research with confidence
Consistent and reproducible results



Long-term and scalable supply
Recombinant technology



Success from the first experiment
Confirmed specificity



Ethical standards compliant
Animal-free production

Anti-LYPD3 antibody [EPR9107] (ab151709)

Please note: All products are "FOR RESEARCH USE ONLY. NOT FOR USE IN DIAGNOSTIC PROCEDURES"

Our Abpromise to you: Quality guaranteed and expert technical support

- Replacement or refund for products not performing as stated on the datasheet
- Valid for 12 months from date of delivery
- Response to your inquiry within 24 hours
- We provide support in Chinese, English, French, German, Japanese and Spanish
- Extensive multi-media technical resources to help you
- We investigate all quality concerns to ensure our products perform to the highest standards

If the product does not perform as described on this datasheet, we will offer a refund or replacement. For full details of the Abpromise, please visit <https://www.abcam.com/abpromise> or contact our technical team.

Terms and conditions

- Guarantee only valid for products bought direct from Abcam or one of our authorized distributors