


Product datasheet

Anti-LYRIC/AEG1 antibody ab226808

4 Images

Overview

<b>Product name</b>	Anti-LYRIC/AEG1 antibody
<b>Description</b>	Rabbit polyclonal to LYRIC/AEG1
<b>Host species</b>	Rabbit
<b>Tested applications</b>	<b>Suitable for:</b> WB, IHC-P, ICC/IF
<b>Species reactivity</b>	<b>Reacts with:</b> Rat, Human <b>Predicted to work with:</b> Mouse, Cow, Pig, Rhesus monkey 
<b>Immunogen</b>	Recombinant fragment within Human LYRIC/AEG1 (internal sequence). The exact sequence is proprietary. Database link: <a href="#">Q86UE4</a>
<b>Positive control</b>	WB: HEK-293T, A431, HeLa and HepG2 cell lysate. ICC/IF: HeLa cells. IHC: Rat brain and intestine tissue.
<b>General notes</b>	This product was previously labelled as LYRIC

Reproducibility is key to advancing scientific discovery and accelerating scientists' next breakthrough.

Abcam is leading the way with our range of recombinant antibodies, knockout-validated antibodies and knockout cell lines, all of which support improved reproducibility.

We are also planning to innovate the way in which we present recommended applications and species on our product datasheets, so that only applications & species that have been tested in our own labs, our suppliers or by selected trusted collaborators are covered by our Abpromise™ guarantee.

In preparation for this, we have started to update the applications & species that this product is Abpromise guaranteed for.

We are also updating the applications & species that this product has been “predicted to work with,” however this information is not covered by our Abpromise guarantee.

Applications & species from publications and Abreviews that have not been tested in our own labs or in those of our suppliers are not covered by the Abpromise guarantee.

Please check that this product meets your needs before purchasing. If you have any questions, special requirements or concerns, please send us an inquiry and/or contact our Support team ahead of purchase. Recommended alternatives for this product can be found below, as well as customer reviews and Q&As.

## Properties

---

<b>Form</b>	Liquid
<b>Storage instructions</b>	Shipped at 4°C. Store at +4°C short term (1-2 weeks). Upon delivery aliquot. Store at -20°C long term. Avoid freeze / thaw cycle.
<b>Storage buffer</b>	pH: 7.00 Preservative: 0.025% Proclin 300 Constituents: 78% PBS, 1% BSA, 20% Glycerol (glycerin, glycerine)
<b>Purity</b>	Immunogen affinity purified
<b>Clonality</b>	Polyclonal
<b>Isotype</b>	IgG

## Applications

---

Our [Abpromise guarantee](#) covers the use of **ab226808** in the following tested applications.

The application notes include recommended starting dilutions; optimal dilutions/concentrations should be determined by the end user.

Application	Abreviews	Notes
WB		1/500 - 1/3000. Predicted molecular weight: 64 kDa.
IHC-P		1/100 - 1/1000.
ICC/IF		1/100 - 1/1000.

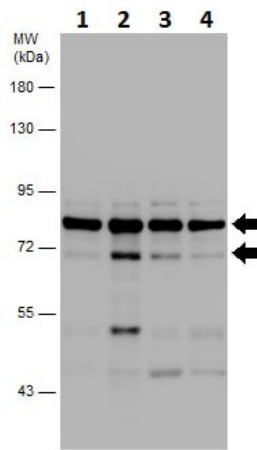
## Target

---

<b>Function</b>	Downregulates SLC1A2/EAAT2 promoter activity when expressed ectopically. Activates the nuclear factor kappa-B (NF-kappa-B) transcription factor. Promotes anchorage-independent growth of immortalized melanocytes and astrocytes which is a key component in tumor cell expansion. Promotes lung metastasis and also has an effect on bone and brain metastasis, possibly by enhancing the seeding of tumor cells to the target organ endothelium. Induces chemoresistance.
<b>Tissue specificity</b>	Widely expressed with highest levels in muscle-dominating organs such as skeletal muscle, heart, tongue and small intestine and in endocrine glands such as thyroid and adrenal gland. Overexpressed in various cancers including breast, brain, prostate, melanoma and glioblastoma multiforme.
<b>Cellular localization</b>	Endoplasmic reticulum membrane. Nucleus membrane. Cell junction > tight junction. Nucleus > nucleolus. Cytoplasm > perinuclear region. In epithelial cells, recruited to tight junctions (TJ) during the maturation of the TJ complexes. A nucleolar staining may be due to nuclear targeting of an isoform lacking the transmembrane domain (By similarity). TNF-alpha causes translocation from the cytoplasm to the nucleus.

## Images

---



Western blot - Anti-LYRIC/AEG1 antibody  
(ab226808)

**All lanes** : Anti-LYRIC/AEG1 antibody (ab226808) at 1/1000 dilution

**Lane 1** : HEK-293T (human epithelial cell line from embryonic kidney transformed with large T antigen) cell lysate

**Lane 2** : A431 (human epidermoid carcinoma cell line) cell lysate

**Lane 3** : HeLa (human epithelial cell line from cervix adenocarcinoma) cell lysate

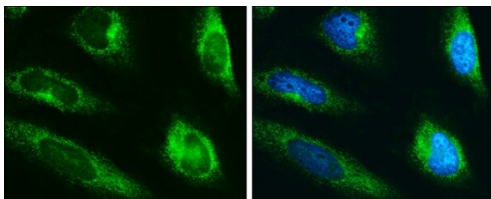
**Lane 4** : HepG2 (human liver hepatocellular carcinoma cell line) cell lysate

Lysates/proteins at 30 µg per lane.

Developed using the ECL technique.

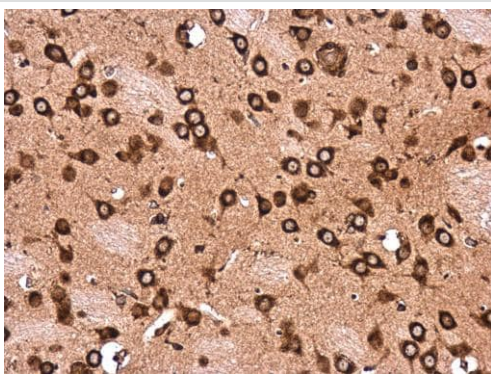
Performed under reducing conditions.

**Predicted band size:** 64 kDa



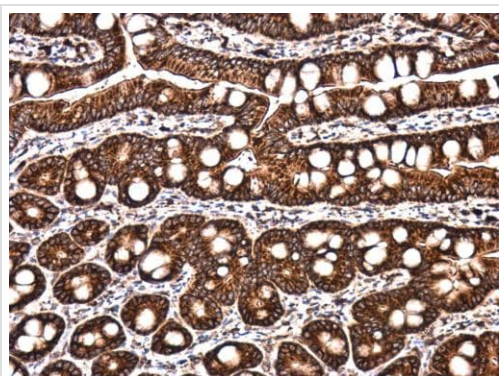
Immunocytochemistry/ Immunofluorescence - Anti-LYRIC/AEG1 antibody (ab226808)

4% paraformaldehyde-fixed HeLa (human epithelial cell line from cervix adenocarcinoma) cells stained for LYRIC/AEG1 (green) using ab226808 at 1/2500 dilution in ICC/IF.



Immunohistochemistry (Formalin/PFA-fixed paraffin-embedded sections) - Anti-LYRIC/AEG1 antibody (ab226808)

Paraffin-embedded rat brain tissue stained for LYRIC/AEG1 using ab226808 at 1/2400 dilution in immunohistochemical analysis.



Paraffin-embedded rat intestine tissue stained for LYRIC/AEG1 using ab226808 at 1/2400 dilution in immunohistochemical analysis.

Immunohistochemistry (Formalin/PFA-fixed paraffin-embedded sections) - Anti-LYRIC/AEG1 antibody (ab226808)

**Please note:** All products are "FOR RESEARCH USE ONLY. NOT FOR USE IN DIAGNOSTIC PROCEDURES"

### **Our Abpromise to you: Quality guaranteed and expert technical support**

---

- Replacement or refund for products not performing as stated on the datasheet
- Valid for 12 months from date of delivery
- Response to your inquiry within 24 hours
- We provide support in Chinese, English, French, German, Japanese and Spanish
- Extensive multi-media technical resources to help you
- We investigate all quality concerns to ensure our products perform to the highest standards

If the product does not perform as described on this datasheet, we will offer a refund or replacement. For full details of the Abpromise, please visit <https://www.abcam.com/abpromise> or contact our technical team.

### **Terms and conditions**

---

- Guarantee only valid for products bought direct from Abcam or one of our authorized distributors