

Product datasheet

Anti-LYRM2 antibody ab106686

3 Images

Overview

Product name	Anti-LYRM2 antibody
Description	Rabbit polyclonal to LYRM2
Host species	Rabbit
Specificity	ab106686 is predicted not to crossreact with other LYRM family members.
Tested applications	Suitable for: WB, ICC, ICC/IF
Species reactivity	Reacts with: Mouse, Rat, Human
Immunogen	A 16 amino acid peptide near the carboxy terminus of Human LYRM2 (NP_065199).
Positive control	A549 cell lysate
General notes	<p>Reproducibility is key to advancing scientific discovery and accelerating scientists' next breakthrough.</p> <p>Abcam is leading the way with our range of recombinant antibodies, knockout-validated antibodies and knockout cell lines, all of which support improved reproducibility.</p> <p>We are also planning to innovate the way in which we present recommended applications and species on our product datasheets, so that only applications & species that have been tested in our own labs, our suppliers or by selected trusted collaborators are covered by our Abpromise™ guarantee.</p> <p>In preparation for this, we have started to update the applications & species that this product is Abpromise guaranteed for.</p> <p>We are also updating the applications & species that this product has been “predicted to work with,” however this information is not covered by our Abpromise guarantee.</p> <p>Applications & species from publications and Abreviews that have not been tested in our own labs or in those of our suppliers are not covered by the Abpromise guarantee.</p> <p>Please check that this product meets your needs before purchasing. If you have any questions, special requirements or concerns, please send us an inquiry and/or contact our Support team ahead of purchase. Recommended alternatives for this product can be found below, as well as customer reviews and Q&As.</p>

Properties

Form	Liquid
-------------	--------

Storage instructions	Shipped at 4°C. Store at 4°C (stable for up to 12 months).
Storage buffer	pH: 7.2 Preservative: 0.02% Sodium azide Constituent: PBS
Purity	Immunogen affinity purified
Purification notes	Affinity chromatography purified via peptide column.
Clonality	Polyclonal
Isotype	IgG

Applications

Our [Abpromise guarantee](#) covers the use of **ab106686** in the following tested applications.

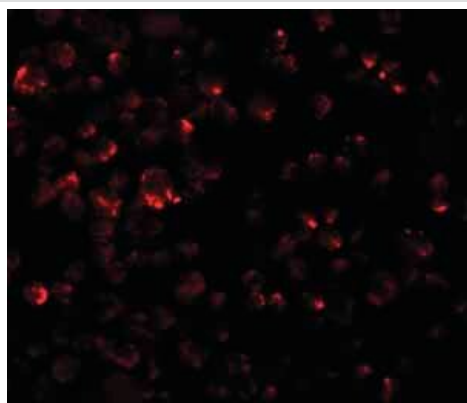
The application notes include recommended starting dilutions; optimal dilutions/concentrations should be determined by the end user.

Application	Abreviews	Notes
WB		Use a concentration of 1 - 2 µg/ml. Predicted molecular weight: 10 kDa.
ICC		Use a concentration of 20 µg/ml.
ICC/IF		Use a concentration of 20 µg/ml.

Target

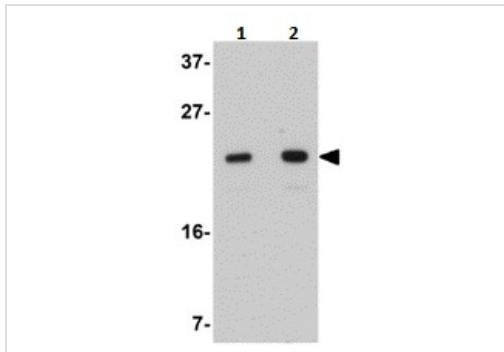
Sequence similarities Belongs to the complex I LYR family.

Images



Immunofluorescence of LYRM2 in A549 cells with ab106686 at 20 µg/mL.

Immunocytochemistry/ Immunofluorescence - Anti-LYRM2 antibody (ab106686)



Western blot - Anti-LYRM2 antibody (ab106686)

Lane 1 : Anti-LYRM2 antibody (ab106686) at 1 µg/ml

Lane 2 : Anti-LYRM2 antibody (ab106686) at 2 µg/ml

All lanes : A549 cell lysate

Lysates/proteins at 15 µg per lane.

Predicted band size: 10 kDa



Immunocytochemistry - Anti-LYRM2 antibody (ab106686)

Immunocytochemical analysis of LYRM2 in A549 cells, using ab106686 at 20 µg/ml.

Please note: All products are "FOR RESEARCH USE ONLY. NOT FOR USE IN DIAGNOSTIC PROCEDURES"

Our Abpromise to you: Quality guaranteed and expert technical support

- Replacement or refund for products not performing as stated on the datasheet
- Valid for 12 months from date of delivery
- Response to your inquiry within 24 hours
- We provide support in Chinese, English, French, German, Japanese and Spanish
- Extensive multi-media technical resources to help you
- We investigate all quality concerns to ensure our products perform to the highest standards

If the product does not perform as described on this datasheet, we will offer a refund or replacement. For full details of the Abpromise, please visit <https://www.abcam.com/abpromise> or contact our technical team.

Terms and conditions

- Guarantee only valid for products bought direct from Abcam or one of our authorized distributors