

Product datasheet

# Lysosomal Staining Kit - Blue Fluorescence - Cytopainter ab112135

1 References 1 Image

Overview

<b>Product name</b>	Lysosomal Staining Kit - Blue Fluorescence - Cytopainter
<b>Sample type</b>	Adherent cells, Suspension cells
<b>Assay type</b>	Cell-based
<b>Product overview</b>	Lysosomal Staining Kit - Blue Fluorescence   Cytopainter (ab112135) is designed to label lysosomes in live cells in blue fluorescence at Ex/Em = 350/440nm. Ab112135 uses a proprietary lysotropic dye that selectively accumulates in lysosomes probably via the lysosome pH gradient. The lysotropic indicator is a hydrophobic compound that easily permeates intact live cells, and is trapped in lysosomes after it gets into the cells. Its fluorescence is significantly enhanced upon entering lysosomes. This key feature significantly reduces its staining background. The labeling protocol is robust, requiring minimal hands-on time.

Ab112135 can be readily adapted for many different types of fluorescence platforms such as microplate assays, flow cytometry and fluorescence microscope. It is useful for a variety of studies, including cell adhesion, chemotaxis, multidrug resistance, cell viability, apoptosis and cytotoxicity. Ab112135 provides all the essential components with an optimized cell-labeling protocol and can be used for both proliferating and non-proliferating cells (either suspension or adherent cells).

Review other dyes and kits for [lysosomal staining](#), or the [live cell staining fluorescent dyes guide](#)

<b>Notes</b>	Abcam's fluorescence imaging kits are a set of fluorescence imaging tools for labeling sub-cellular organelles such as lysosomes, mitochondria, and actin filaments. The selective staining of cell compartments provides a powerful method for studying cellular events in a spatial and temporal context.
--------------	---

<b>Platform</b>	Fluorescence microscope
-----------------	-------------------------

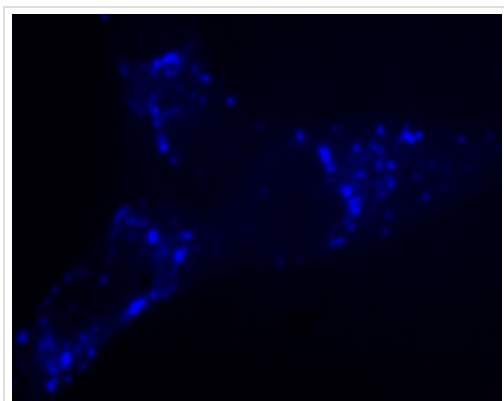
Properties

<b>Storage instructions</b>	Store at -20°C. Please refer to protocols.
-----------------------------	--

<b>Components</b>	<b>500 tests</b>
Live Cell Staining Buffer	1 x 50ml

Components	500 tests
LysoBlue Indicator	1 x 100µl

## Images



ab112135 staining U2OS cells by Immunofluorescence (in a black 96 well plate).

Immunocytochemistry/ Immunofluorescence -  
Lysosomal Staining Kit - Blue Fluorescence  
(ab112135)

**Please note:** All products are "FOR RESEARCH USE ONLY. NOT FOR USE IN DIAGNOSTIC PROCEDURES"

## Our Abpromise to you: Quality guaranteed and expert technical support

- Replacement or refund for products not performing as stated on the datasheet
- Valid for 12 months from date of delivery
- Response to your inquiry within 24 hours
- We provide support in Chinese, English, French, German, Japanese and Spanish
- Extensive multi-media technical resources to help you
- We investigate all quality concerns to ensure our products perform to the highest standards

If the product does not perform as described on this datasheet, we will offer a refund or replacement. For full details of the Abpromise, please visit <https://www.abcam.com/abpromise> or contact our technical team.

## Terms and conditions

- Guarantee only valid for products bought direct from Abcam or one of our authorized distributors