

Product datasheet

Anti-Lysozyme antibody [SP350] - C-terminal ab227708

Recombinant RabMAb

9 Images

Overview

| | |
|----------------------------|--|
| Product name | Anti-Lysozyme antibody [SP350] - C-terminal |
| Description | Rabbit monoclonal [SP350] to Lysozyme - C-terminal |
| Host species | Rabbit |
| Tested applications | Suitable for: WB, Flow Cyt, IHC-P |
| Species reactivity | Reacts with: Human |
| Immunogen | Synthetic peptide corresponding to Human Lysozyme (C terminal). Database link: P61626 |
| Positive control | WB: HL-60 whole cell lysate. IHC-P: Human tonsil, lung, liver, spleen, stomach adenocarcinoma and pancreatic adenocarcinoma tissues. Flow Cyt: HL-60 cells. |
| General notes | <p>FOR RESEARCH USE ONLY. For commercial use, please contact partnerships@abcam.com.</p> <p>This product is a recombinant monoclonal antibody, which offers several advantages including:</p> <ul style="list-style-type: none"> - High batch-to-batch consistency and reproducibility - Improved sensitivity and specificity - Long-term security of supply - Animal-free production <p>For more information see here.</p> <p>Our RabMAb[®] technology is a patented hybridoma-based technology for making rabbit monoclonal antibodies. For details on our patents, please refer to RabMAb[®] patents.</p> <p>Reproducibility is key to advancing scientific discovery and accelerating scientists' next breakthrough.</p> <p>Abcam is leading the way with our range of recombinant antibodies, knockout-validated antibodies and knockout cell lines, all of which support improved reproducibility.</p> <p>We are also planning to innovate the way in which we present recommended applications and species on our product datasheets, so that only applications & species that have been tested in our own labs, our suppliers or by selected trusted collaborators are covered by our Abpromise[™] guarantee.</p> <p>In preparation for this, we have started to update the applications & species that this product is Abpromise guaranteed for.</p> <p>We are also updating the applications & species that this product has been "predicted to work with," however this information is not covered by our Abpromise guarantee.</p> |

Applications & species from publications and Abreviews that have not been tested in our own labs or in those of our suppliers are not covered by the Abpromise guarantee.

Please check that this product meets your needs before purchasing. If you have any questions, special requirements or concerns, please send us an inquiry and/or contact our Support team ahead of purchase. Recommended alternatives for this product can be found below, as well as customer reviews and Q&As.

Properties

| | |
|-----------------------------|---|
| Form | Liquid |
| Storage instructions | Shipped at 4°C. Store at +4°C short term (1-2 weeks). Upon delivery aliquot. Store at -20°C long term. Avoid freeze / thaw cycle. |
| Storage buffer | pH: 7.20 Preservative: 0.1% Sodium azide Constituents: 1% BSA, PBS |
| Purity | Protein A purified |
| Clonality | Monoclonal |
| Clone number | SP350 |
| Isotype | IgG |

Applications

Our [Abpromise guarantee](#) covers the use of **ab227708** in the following tested applications.

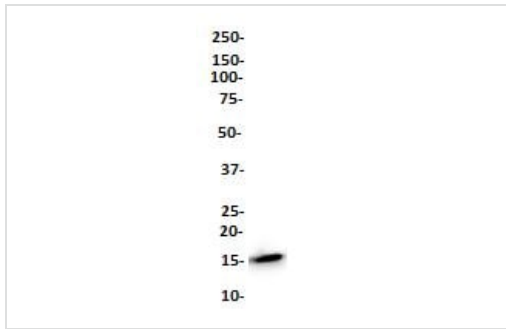
The application notes include recommended starting dilutions; optimal dilutions/concentrations should be determined by the end user.

| Application | Abreviews | Notes |
|-------------|-----------|--|
| WB | | 1/400. Predicted molecular weight: 16 kDa. |
| Flow Cyt | | 1/100. |
| IHC-P | | 1/100. Perform heat mediated antigen retrieval with Tris/EDTA buffer pH 8.0 before commencing with IHC staining protocol. |

Target

| | |
|-------------------------------|--|
| Function | Lysozymes have primarily a bacteriolytic function; those in tissues and body fluids are associated with the monocyte-macrophage system and enhance the activity of immunoagents. |
| Involvement in disease | Amyloidosis 8 |
| Sequence similarities | Belongs to the glycosyl hydrolase 22 family. |
| Cellular localization | Secreted. |

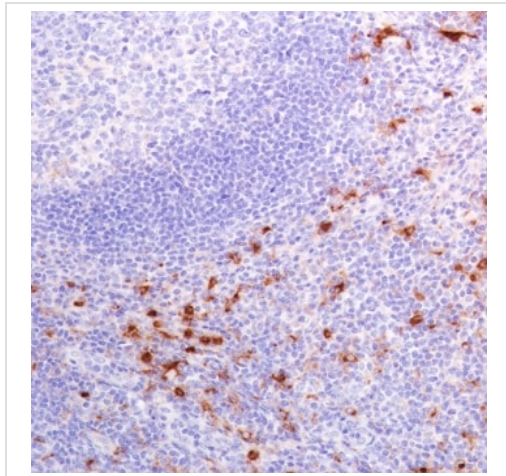
Images



Western blot - Anti-Lysozyme antibody [SP350] - C-terminal (ab227708)

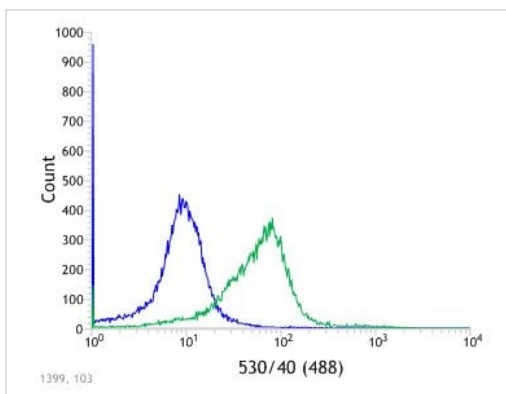
Anti-Lysozyme antibody [SP350] - C-terminal (ab227708) at 1/400 dilution + HL-60 (human promyelocytic leukemia cell line) cell lysate

Predicted band size: 16 kDa



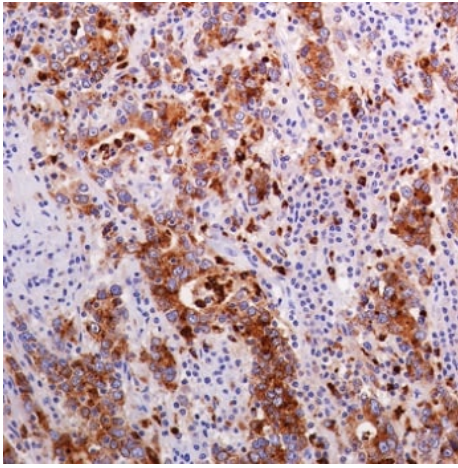
Formalin-fixed, paraffin-embedded human tonsil tissue stained for Lysozyme using ab227708 at 1/100 dilution in immunohistochemical analysis.

Immunohistochemistry (Formalin/PFA-fixed paraffin-embedded sections) - Anti-Lysozyme antibody [SP350] - C-terminal (ab227708)



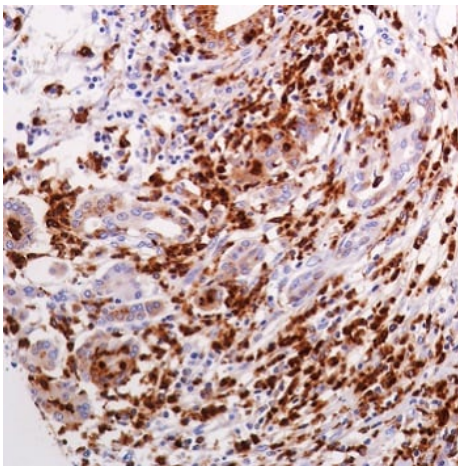
Flow cytometric analysis of HL-60 (human promyelocytic leukemia cell line) cell line labeling Lysozyme with ab227708 at 1/100 dilution (green) compared with a Rabbit IgG negative control (blue).

Immunohistochemistry (Formalin/PFA-fixed paraffin-embedded sections) - Anti-Lysozyme antibody [SP350] - C-terminal (ab227708)



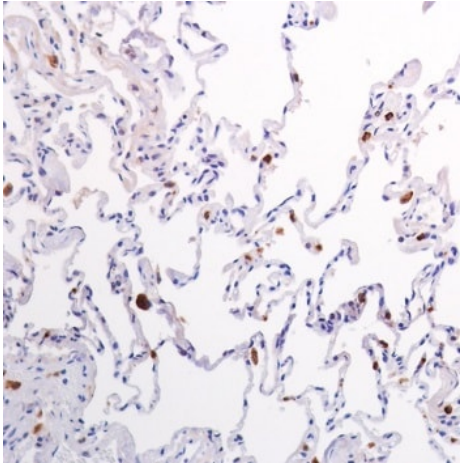
Immunohistochemistry (Formalin/PFA-fixed paraffin-embedded sections) - Anti-Lysozyme antibody [SP350] - C-terminal (ab227708)

Formalin-fixed, paraffin-embedded human stomach adenocarcinoma tissue stained for Lysozyme using ab227708 at 1/100 dilution in immunohistochemical analysis.



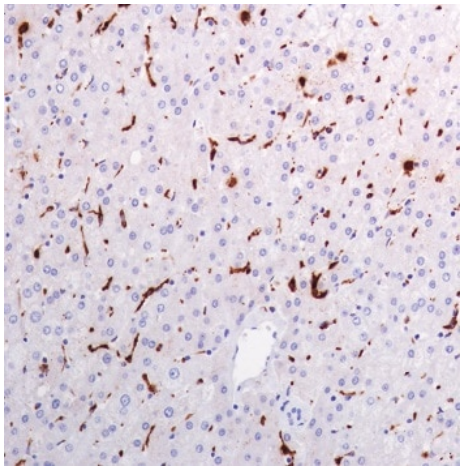
Immunohistochemistry (Formalin/PFA-fixed paraffin-embedded sections) - Anti-Lysozyme antibody [SP350] - C-terminal (ab227708)

Formalin-fixed, paraffin-embedded human pancreatic adenocarcinoma tissue stained for Lysozyme using ab227708 at 1/100 dilution in immunohistochemical analysis.



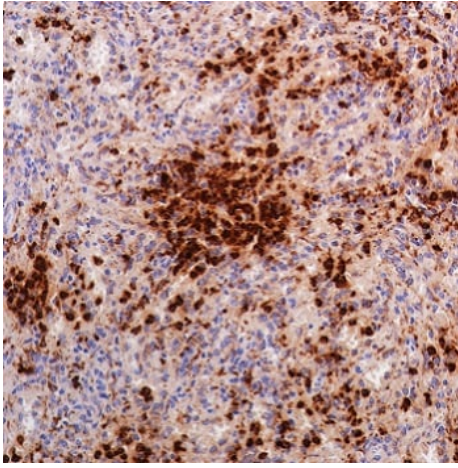
Formalin-fixed, paraffin-embedded human lung tissue stained for Lysozyme using ab227708 at 1/100 dilution in immunohistochemical analysis.

Immunohistochemistry (Formalin/PFA-fixed paraffin-embedded sections) - Anti-Lysozyme antibody [SP350] - C-terminal (ab227708)



Formalin-fixed, paraffin-embedded human liver tissue stained for Lysozyme using ab227708 at 1/100 dilution in immunohistochemical analysis.

Immunohistochemistry (Formalin/PFA-fixed paraffin-embedded sections) - Anti-Lysozyme antibody [SP350] - C-terminal (ab227708)



Formalin-fixed, paraffin-embedded human spleen tissue stained for Lysozyme using ab227708 at 1/100 dilution in immunohistochemical analysis.

Immunohistochemistry (Formalin/PFA-fixed paraffin-embedded sections) - Anti-Lysozyme antibody [SP350] - C-terminal (ab227708)

Why choose a recombinant antibody?



Research with confidence
Consistent and reproducible results



Long-term and scalable supply
Recombinant technology



Success from the first experiment
Confirmed specificity



Ethical standards compliant
Animal-free production

Anti-Lysozyme antibody [SP350] - C-terminal (ab227708)

Please note: All products are "FOR RESEARCH USE ONLY. NOT FOR USE IN DIAGNOSTIC PROCEDURES"

Our Abpromise to you: Quality guaranteed and expert technical support

- Replacement or refund for products not performing as stated on the datasheet
- Valid for 12 months from date of delivery
- Response to your inquiry within 24 hours
- We provide support in Chinese, English, French, German, Japanese and Spanish
- Extensive multi-media technical resources to help you
- We investigate all quality concerns to ensure our products perform to the highest standards

If the product does not perform as described on this datasheet, we will offer a refund or replacement. For full details of the Abpromise, please visit <https://www.abcam.com/abpromise> or contact our technical team.

Terms and conditions

- Guarantee only valid for products bought direct from Abcam or one of our authorized distributors