

## Product datasheet

# Anti-LZTR1 antibody ab106655

[2 Images](#)

### Overview

---

<b>Product name</b>	Anti-LZTR1 antibody
<b>Description</b>	Rabbit polyclonal to LZTR1
<b>Host species</b>	Rabbit
<b>Specificity</b>	At least four isoforms of LZTR1 are known to exist; ab106655 will recognize all but the shortest isoform. ab106655 is predicted not to cross-react with LZTR2.
<b>Tested applications</b>	<b>Suitable for:</b> IHC-P, WB
<b>Species reactivity</b>	<b>Reacts with:</b> Mouse, Human
<b>Immunogen</b>	A 14 amino acid synthetic peptide near the N terminus of Human LZTR1 (CAJ86451).
<b>General notes</b>	<p>The Life Science industry has been in the grips of a reproducibility crisis for a number of years. Abcam is leading the way in addressing this with our range of recombinant monoclonal antibodies and knockout edited cell lines for gold-standard validation. Please check that this product meets your needs before purchasing.</p> <p>If you have any questions, special requirements or concerns, please send us an inquiry and/or contact our Support team ahead of purchase. Recommended alternatives for this product can be found below, along with publications, customer reviews and Q&amp;As</p>

### Properties

---

<b>Form</b>	Liquid
<b>Storage instructions</b>	Shipped at 4°C. Store at 4°C (stable for up to 12 months).
<b>Storage buffer</b>	pH: 7.2 Preservative: 0.02% Sodium azide Constituent: PBS
<b>Purity</b>	Immunogen affinity purified
<b>Clonality</b>	Polyclonal
<b>Isotype</b>	IgG

### Applications

---

**The Abpromise guarantee** Our [Abpromise guarantee](#) covers the use of ab106655 in the following tested applications.

The application notes include recommended starting dilutions; optimal dilutions/concentrations should be determined by the end user.

Application	Abreviews	Notes
IHC-P		Use a concentration of 5 µg/ml.
WB		Use a concentration of 1 - 2 µg/ml. Predicted molecular weight: 95 kDa.

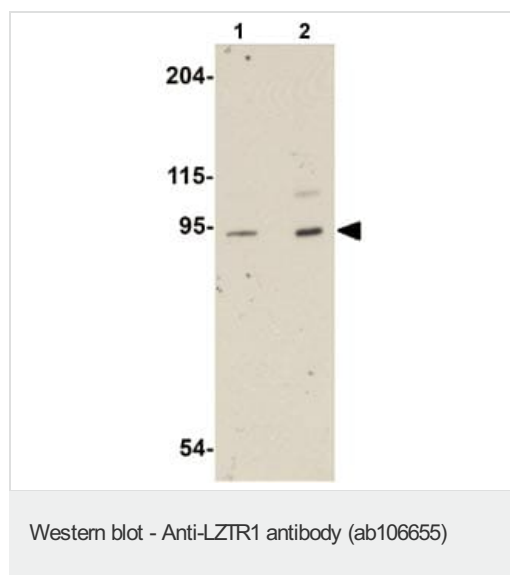
## Target

**Function** Probable transcriptional regulator that may play a crucial role in embryogenesis.

**Sequence similarities** Contains 2 BTB (POZ) domains.  
Contains 6 Kelch repeats.

**Developmental stage** Expressed in fetal brain, heart, kidney, liver and lung.

## Images



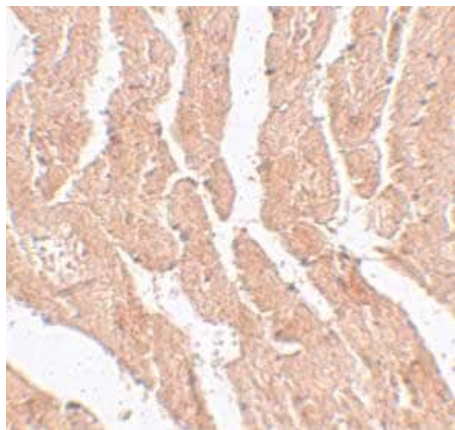
**Lane 1** : Anti-LZTR1 antibody (ab106655) at 1 µg/ml

**Lane 2** : Anti-LZTR1 antibody (ab106655) at 2 µg/ml

**All lanes** : Human heart tissue lysate

Lysates/proteins at 15 µg per lane.

**Predicted band size:** 95 kDa



ab106655, at 5 µg/ml, staining LZTR1 in Mouse heart tissue by Immunohistochemistry.

Immunohistochemistry (Formalin/PFA-fixed paraffin-embedded sections) - Anti-LZTR1 antibody (ab106655)

**Please note:** All products are "FOR RESEARCH USE ONLY. NOT FOR USE IN DIAGNOSTIC PROCEDURES"

### Our Abpromise to you: Quality guaranteed and expert technical support

---

- Replacement or refund for products not performing as stated on the datasheet
- Valid for 12 months from date of delivery
- Response to your inquiry within 24 hours
- We provide support in Chinese, English, French, German, Japanese and Spanish
- Extensive multi-media technical resources to help you
- We investigate all quality concerns to ensure our products perform to the highest standards

If the product does not perform as described on this datasheet, we will offer a refund or replacement. For full details of the Abpromise, please visit <https://www.abcam.com/abpromise> or contact our technical team.

### Terms and conditions

---

- Guarantee only valid for products bought direct from Abcam or one of our authorized distributors