



Product datasheet

Anti-Macrophage inflammatory protein 5 antibody ab219388

2 Images

Overview

Product name	Anti-Macrophage inflammatory protein 5 antibody
Description	Rabbit polyclonal to Macrophage inflammatory protein 5
Host species	Rabbit
Tested applications	Suitable for: WB, IHC-P
Species reactivity	Reacts with: Human
Immunogen	<p>Recombinant full length protein corresponding to Human Macrophage inflammatory protein 5 aa 22-113. Expressed in E. coli.</p> <p>Sequence:</p> <p>QFINDAETELMMSKLPLENPVVLNSFHFAADCCTSIS QSIPCSLMKSYF ETSSECSKPGVIFLTKKGRQVCAKPSGPGVQDCMKK LKPYSI</p> <p>Database link: Q16663</p> <p style="text-align: right;">  Run BLAST with  Run BLAST with </p>
Positive control	Human pancreas tissue; Recombinant human Macrophage inflammatory protein 5.

Properties

Form	Liquid
Storage instructions	Shipped at 4°C. Store at +4°C short term (1-2 weeks). Upon delivery aliquot. Store at -20°C long term. Avoid freeze / thaw cycle.
Storage buffer	<p>pH: 7.40</p> <p>Preservative: 0.02% Sodium azide</p> <p>Constituents: 50% Glycerol, 49% PBS</p>
Purity	Protein A purified
Clonality	Polyclonal
Isotype	IgG

Applications

Our [Abpromise guarantee](#) covers the use of **ab219388** in the following tested applications.

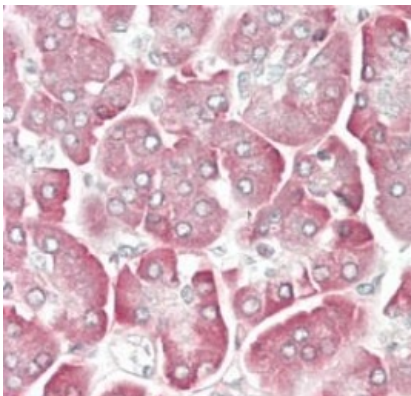
The application notes include recommended starting dilutions; optimal dilutions/concentrations should be determined by the end user.

Application	Abreviews	Notes
WB		1/100 - 1/400. Predicted molecular weight: 12 kDa.
IHC-P		Use a concentration of 10 µg/ml.

Target

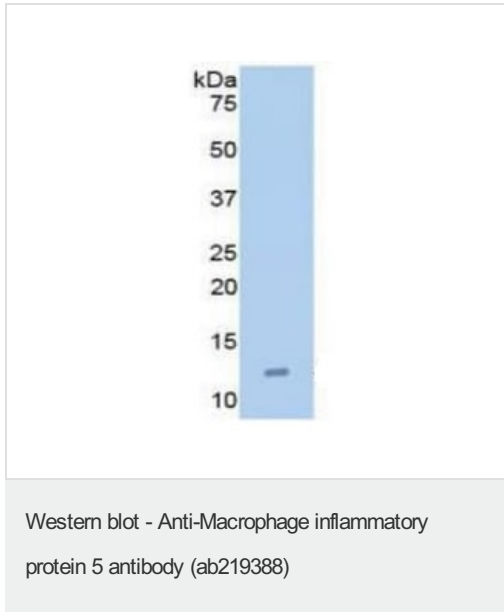
Function	Chemotactic factor that attracts T-cells and monocytes, but not neutrophils, eosinophils, or B-cells. Acts mainly via CC chemokine receptor CCR1. Also binds to CCR3. CCL15(22-92), CCL15(25-92) and CCL15(29-92) are more potent chemoattractants than the small-inducible cytokine A15.
Tissue specificity	Most abundant in heart, skeletal muscle and adrenal gland. Lower levels in placenta, liver, pancreas and bone marrow. CCL15(22-92), CCL15(25-92) and CCL15(29-92) are found in high levels in synovial fluids from rheumatoid patients.
Sequence similarities	Belongs to the intercrine beta (chemokine CC) family.
Cellular localization	Secreted.

Images



Immunohistochemical analysis of formalin-fixed, paraffin-embedded human pancreas tissue labeling Macrophage inflammatory protein 5 with ab219388 at 10 µg/mL.

Immunohistochemistry (Formalin/PFA-fixed paraffin-embedded sections) - Anti-Macrophage inflammatory protein 5 antibody (ab219388)



Anti-Macrophage inflammatory protein 5 antibody (ab219388) at 1/100 dilution + recombinant human Macrophage inflammatory protein 5

Predicted band size: 12 kDa

Please note: All products are "FOR RESEARCH USE ONLY. NOT FOR USE IN DIAGNOSTIC PROCEDURES"

Our Abpromise to you: Quality guaranteed and expert technical support

- Replacement or refund for products not performing as stated on the datasheet
- Valid for 12 months from date of delivery
- Response to your inquiry within 24 hours
- We provide support in Chinese, English, French, German, Japanese and Spanish
- Extensive multi-media technical resources to help you
- We investigate all quality concerns to ensure our products perform to the highest standards

If the product does not perform as described on this datasheet, we will offer a refund or replacement. For full details of the Abpromise, please visit <https://www.abcam.com/abpromise> or contact our technical team.

Terms and conditions

- Guarantee only valid for products bought direct from Abcam or one of our authorized distributors