

## Product datasheet

# Anti-MAD1 antibody [EPR14676] ab184175

Recombinant RabMAb

★ ★ ★ ★ ★ 1 Abreviews 3 Images

### Overview

<b>Product name</b>	Anti-MAD1 antibody [EPR14676]
<b>Description</b>	Rabbit monoclonal [EPR14676] to MAD1
<b>Host species</b>	Rabbit
<b>Tested applications</b>	<b>Suitable for:</b> WB
<b>Species reactivity</b>	<b>Reacts with:</b> Human <b>Predicted to work with:</b> Mouse, Rat ▲
<b>Immunogen</b>	Recombinant fragment. This information is proprietary to Abcam and/or its suppliers.
<b>Positive control</b>	HepG2, MCF7, HeLa and A431 cell lysates.
<b>General notes</b>	

This product is a recombinant monoclonal antibody, which offers several advantages including:

- High batch-to-batch consistency and reproducibility
- Improved sensitivity and specificity
- Long-term security of supply
- Animal-free production

For more information [see here](#).

Our RabMAb<sup>®</sup> technology is a patented hybridoma-based technology for making rabbit monoclonal antibodies. For details on our patents, please refer to [RabMAb<sup>®</sup> patents](#).

### Properties

<b>Form</b>	Liquid
<b>Storage instructions</b>	Shipped at 4°C. Store at +4°C short term (1-2 weeks). Upon delivery aliquot. Store at -20°C long term. Avoid freeze / thaw cycle.
<b>Storage buffer</b>	pH: 7.2 Preservative: 0.01% Sodium azide Constituents: 40% Glycerol (glycerin, glycerine), 59% PBS, 0.05% BSA
<b>Purity</b>	Tissue culture supernatant
<b>Clonality</b>	Monoclonal

Clone number                   EPR14676

Isotype                            IgG

## Applications

---

**The Abpromise guarantee**       Our [Abpromise guarantee](#) covers the use of ab184175 in the following tested applications. The application notes include recommended starting dilutions; optimal dilutions/concentrations should be determined by the end user.

Application	Abreviews	Notes
WB		1/1000 - 1/10000. Detects a band of approximately 83 kDa (predicted molecular weight: 83 kDa).

## Target

---

**Function**                            Component of the spindle-assembly checkpoint that prevents the onset of anaphase until all chromosomes are properly aligned at the metaphase plate. May recruit MAD2L1 to unattached kinetochores. Has a role in the correct positioning of the septum. Required for anchoring MAD2L1 to the nuclear periphery. Binds to the TERT promoter and represses telomerase expression, possibly by interfering with MYC binding.

**Tissue specificity**                Expressed weakly at G0/G1 and highly at late S and G2/M phase.

**Involvement in disease**         Defects in MAD1L1 are involved in the development and/or progression of various types of cancer.

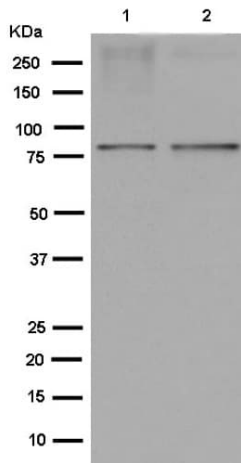
**Sequence similarities**             Belongs to the MAD1 family.

**Post-translational modifications**   Phosphorylated; by BUB1. Become hyperphosphorylated in late S through M phases or after mitotic spindle damage.

**Cellular localization**            Nucleus. Chromosome > centromere > kinetochore. Cytoplasm > cytoskeleton > microtubule organizing center > centrosome. Cytoplasm > cytoskeleton > spindle. From the beginning to the end of mitosis, it is seen to move from a diffusely nuclear distribution to the centrosome, to the spindle midzone and finally to the midbody. Colocalizes with NEK2 at the kinetochore.

## Images

---



Western blot - Anti-MAD1 antibody [EPR14676] (ab184175)

**All lanes** : Anti-MAD1 antibody [EPR14676] (ab184175) at 1/1000 dilution

**Lane 1** : HepG2 cell lysate

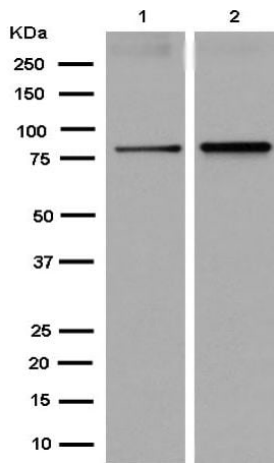
**Lane 2** : MCF7 cell lysate

Lysates/proteins at 20 µg per lane.

**Secondary**

**All lanes** : Goat Anti-Rabbit IgG, (H+L), Peroxidase conjugated at 1/1000 dilution

**Predicted band size:** 83 kDa



Western blot - Anti-MAD1 antibody [EPR14676] (ab184175)

**All lanes** : Anti-MAD1 antibody [EPR14676] (ab184175) at 1/5000 dilution

**Lane 1** : HeLa cell lysate

**Lane 2** : A431 cell lysate





Lysates/proteins at 20 µg per lane.

**Secondary**

**All lanes** : Goat Anti-Rabbit IgG, (H+L), Peroxidase conjugated at 1/1000 dilution

**Predicted band size:** 83 kDa

Why choose a recombinant antibody?

 <b>Research with confidence</b> Consistent and reproducible results	 <b>Long-term and scalable supply</b> Recombinant technology
 <b>Success from the first experiment</b> Confirmed specificity	 <b>Ethical standards compliant</b> Animal-free production

Anti-MAD1 antibody [EPR14676] (ab184175)

**Please note:** All products are "FOR RESEARCH USE ONLY. NOT FOR USE IN DIAGNOSTIC PROCEDURES"

### **Our Abpromise to you: Quality guaranteed and expert technical support**

---

- Replacement or refund for products not performing as stated on the datasheet
- Valid for 12 months from date of delivery
- Response to your inquiry within 24 hours
  
- We provide support in Chinese, English, French, German, Japanese and Spanish
- Extensive multi-media technical resources to help you
- We investigate all quality concerns to ensure our products perform to the highest standards

If the product does not perform as described on this datasheet, we will offer a refund or replacement. For full details of the Abpromise, please visit <https://www.abcam.com/abpromise> or contact our technical team.

### **Terms and conditions**

---

- Guarantee only valid for products bought direct from Abcam or one of our authorized distributors