



Product datasheet

Anti-MAGE3 antibody [OT11H1] ab140678

2 References 2 Images

Overview

Product name	Anti-MAGE3 antibody [OT11H1]
Description	Mouse monoclonal [OT11H1] to MAGE3
Host species	Mouse
Tested applications	Suitable for: WB, IHC-P
Species reactivity	Reacts with: Human
Immunogen	<p>Recombinant full length protein corresponding to Human MAGE3 aa 1-314. Sequence:</p> <p>MPLEQRSQHCKPEEGLEARGEALGLVGAQAPATEEQEA ASSSSTLVEVTL GEVPAAESPDPQSPQGASSLPTTMNYPLWSQSYEDSS NQEEEGPSTFPD LESEFQAALSRKVAELVHFLLLKYRAREPVTKAEMLGSVV GNWQYFFPVI FSKASSSLQLVFGIELMEVDPIGHL YFATCLGLSYDGLLD NQIMPKAG LLIIVLAIAREGDCAPEEKWEELSVLEVFEGREDSILGDPK KLLTQHF VQENYLEYRQVPGSDPACYEFLWGPRALVETSYVKVLHH MVKISGGPHIS YPPLHEWVLRGEE</p> <p>Database link: NP_005353</p> <p style="text-align: right;">  Run BLAST with  Run BLAST with </p>
Positive control	HEK293T cell lysate transfected with pCMV6-ENTRY MAGE3 cDNA; Human kidney and colon adenocarcinoma tissues
General notes	<p>The clone number has been updated from 1H1 to OT11H1, both clone numbers name the same clone.</p> <p>Dilute in PBS (pH7.3) before use.</p> <p>This product was changed from ascites to tissue culture supernatant on 10th September 2018. Please note that the dilutions may need to be adjusted accordingly. If you have any questions, please do not hesitate to contact our scientific support team.</p> <p>This product was previously labelled as MAGEA3</p>

The Life Science industry has been in the grips of a reproducibility crisis for a number of years. Abcam is leading the way in addressing this with our range of recombinant monoclonal antibodies and knockout edited cell lines for gold-standard validation. Please check that this product meets your needs before purchasing.

If you have any questions, special requirements or concerns, please send us an inquiry and/or contact our Support team ahead of purchase. Recommended alternatives for this product can be found below, along with publications, customer reviews and Q&As

Properties

Form	Liquid
Storage instructions	Shipped at 4°C. Upon delivery aliquot and store at -20°C. Avoid repeated freeze / thaw cycles.
Storage buffer	pH: 7.30 Preservative: 0.02% Sodium azide Constituents: 48% PBS, 50% Glycerol, 1% BSA
Purity	Protein G purified
Purification notes	ab140678 is purified from TCS by affinity chromatography.
Clonality	Monoclonal
Clone number	OT11H1
Isotype	IgG1

Applications

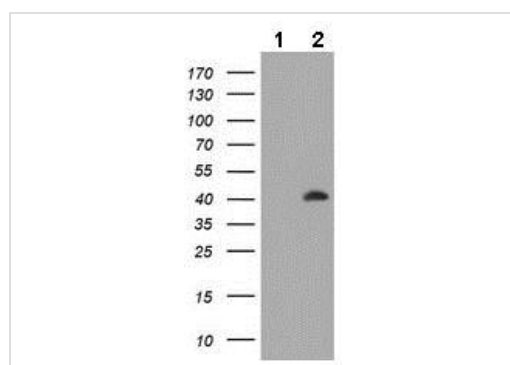
The Abpromise guarantee Our [Abpromise guarantee](#) covers the use of ab140678 in the following tested applications. The application notes include recommended starting dilutions; optimal dilutions/concentrations should be determined by the end user.

Application	Abreviews	Notes
WB		1/2000. Predicted molecular weight: 35 kDa.
IHC-P		1/150.

Target

Function	Proposed to enhance ubiquitin ligase activity of RING-type zinc finger-containing E3 ubiquitin-protein ligases. May enhance ubiquitin ligase activity of TRIM28 and stimulate p53/TP53 ubiquitination by TRIM28. Proposed to act through recruitment and/or stabilization of the Ubl-conjugating enzyme (E2) at the E3:substrate complex. May play a role in embryonal development and tumor transformation or aspects of tumor progression. In vitro promotes cell viability in melanoma cell lines. Antigen recognized on a melanoma by autologous cytolytic T-lymphocytes.
Tissue specificity	Expressed in many tumors of several types, such as melanoma, head and neck squamous cell carcinoma, lung carcinoma and breast carcinoma, but not in normal tissues except for testes and placenta. Never expressed in kidney tumors, Leukemias and lymphomas.
Sequence similarities	Contains 1 MAGE domain.

Images



Western blot - Anti-MAGE3 antibody [OT11H1] (ab140678)

All lanes : Anti-MAGE3 antibody [OT11H1] (ab140678) at 1/2000 dilution

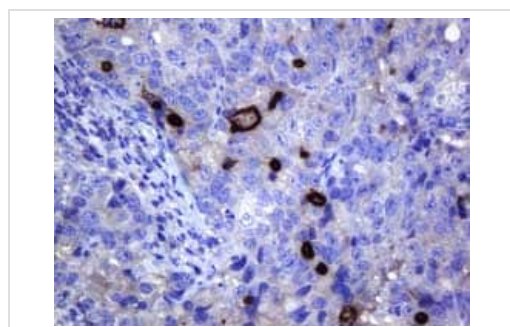
Lane 1 : HEK293T cell lysate transfected with pCMV6-ENTRY control

Lane 2 : HEK293T cell lysate transfected with pCMV6-ENTRY MAGE3 cDNA

Lysates/proteins at 5 µg per lane.

Predicted band size: 35 kDa

HEK293T cell lysates were generated from transient transfection of the cDNA clone (RC210002)



Immunohistochemistry (Formalin/PFA-fixed paraffin-embedded sections) - Anti-MAGE3 antibody [OT11H1] (ab140678)

Immunohistochemical analysis of paraffin-embedded Human colon adenocarcinoma tissue labelling MAGE3 with ab140678 at 1/150 dilution.

Please note: All products are "FOR RESEARCH USE ONLY. NOT FOR USE IN DIAGNOSTIC PROCEDURES"

Our Abpromise to you: Quality guaranteed and expert technical support

- Replacement or refund for products not performing as stated on the datasheet
- Valid for 12 months from date of delivery
- Response to your inquiry within 24 hours
- We provide support in Chinese, English, French, German, Japanese and Spanish
- Extensive multi-media technical resources to help you
- We investigate all quality concerns to ensure our products perform to the highest standards

If the product does not perform as described on this datasheet, we will offer a refund or replacement. For full details of the Abpromise, please visit <https://www.abcam.com/abpromise> or contact our technical team.

Terms and conditions

- Guarantee only valid for products bought direct from Abcam or one of our authorized distributors