

Product datasheet

Anti-MAGEE2 antibody ab122118

3 Images

Overview

|                            |  |
|----------------------------|--|
| <b>Product name</b>        | Anti-MAGEE2 antibody   |
| <b>Description</b>         | Rabbit polyclonal to MAGEE2  |
| <b>Host species</b>        | Rabbit   |
| <b>Tested applications</b> | <b>Suitable for:</b> WB, IHC-P, ICC/IF   |
| <b>Species reactivity</b>  | <b>Reacts with:</b> Human  |
| <b>Immunogen</b>           | antigen sequence: EALKFVSDAH DEEPWSWPEE YNKALEGDKT KERSLTAGLE FWS EDTMNDK ANDLVQLAIS VTEEMPLPIHQ DELLAHTGKE FEDLVFPNILN RATLILDMFY GLSLIEVD T corresponding to amino acids of Human MAGEE2.<br><a href="#">Run BLAST with ExPASy</a> <a href="#">Run BLAST with NCBI</a> |
| <b>Positive control</b>    | Human colon tissue; MAGEE2 over-expression HEK293T lysate.   |

Properties

|                             |   |
|-----------------------------|---|
| <b>Form</b>                 | Liquid  |
| <b>Storage instructions</b> | Shipped at 4°C. Upon delivery aliquot and store at -20°C. Avoid freeze / thaw cycles. |
| <b>Storage buffer</b>       | pH: 7.20<br>Preservative: 0.02% Sodium azide<br>Constituents: 59% PBS, 40% Glycerol   |
| <b>Purity</b>               | Immunogen affinity purified   |
| <b>Clonality</b>            | Polyclonal  |
| <b>Isotype</b>              | IgG   |

Applications

Our [Abpromise guarantee](#) covers the use of **ab122118** in the following tested applications.

The application notes include recommended starting dilutions; optimal dilutions/concentrations should be determined by the end user.

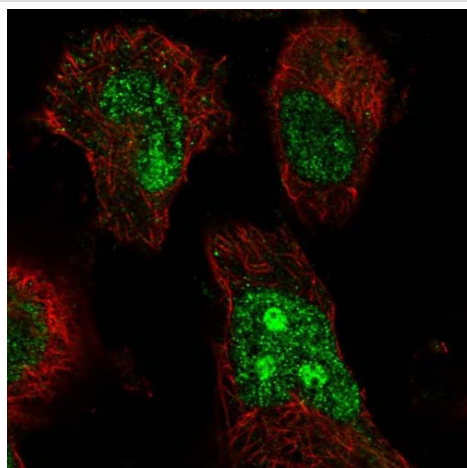
| Application | Abreviews | Notes          |
|-------------|-----------|----------------|
| WB          |           | 1/250 - 1/500. |

| Application | Abreviews | Notes  |
|-------------|-----------|--|
| IHC-P       |           | 1/50 - 1/200. Perform heat mediated antigen retrieval with citrate buffer pH 6 before commencing with IHC staining protocol. |
| ICC/IF      |           | Use a concentration of 1 - 4 µg/ml.<br>Recommend PFA Fixation and Triton X-100 treatment                                     |

## Target

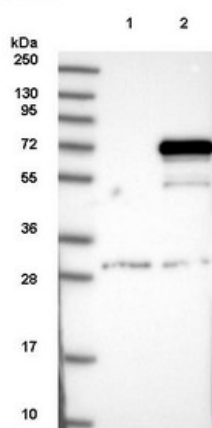
**Sequence similarities** Contains 2 MAGE domains.

## Images



Immunofluorescent staining of Human cell line U-251MG shows positivity in nucleus and nucleoli. Recommended concentration of ab122118 1-4 µg/ml. Cells treated with PFA/Triton X-100.

Immunocytochemistry/ Immunofluorescence - Anti-MAGEE2 antibody (ab122118)



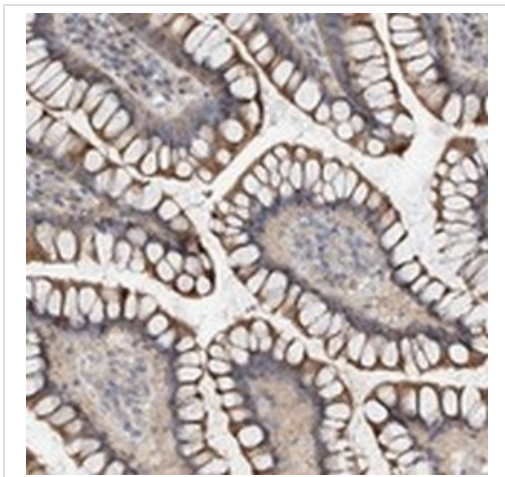
**All lanes** : Anti-MAGEE2 antibody (ab122118) at 1/250 dilution

**Lane 1** : Negative control (vector only transfected HEK293T lysate)

**Lane 2** : Over-expression Lysate (Co-expressed with a C-terminal myc-DDK tag (~3.1 kDa) in mammalian HEK293T cells)

Developed using the ECL technique.

Western blot - Anti-MAGEE2 antibody (ab122118)



ab122118, at 1/50 dilution, staining MAGEE2 in paraffin embedded Human colon tissue by Immunohistochemistry.

Immunohistochemistry (Formalin/PFA-fixed paraffin-embedded sections) - Anti-MAGEE2 antibody (ab122118)

**Please note:** All products are "FOR RESEARCH USE ONLY. NOT FOR USE IN DIAGNOSTIC PROCEDURES"

#### **Our Abpromise to you: Quality guaranteed and expert technical support**

---

- Replacement or refund for products not performing as stated on the datasheet
- Valid for 12 months from date of delivery
- Response to your inquiry within 24 hours
- We provide support in Chinese, English, French, German, Japanese and Spanish
- Extensive multi-media technical resources to help you
- We investigate all quality concerns to ensure our products perform to the highest standards

If the product does not perform as described on this datasheet, we will offer a refund or replacement. For full details of the Abpromise, please visit <https://www.abcam.com/abpromise> or contact our technical team.

#### **Terms and conditions**

---

- Guarantee only valid for products bought direct from Abcam or one of our authorized distributors