



Product datasheet

Anti-Major Basic Protein antibody ab187523

2 References 1 Image

Overview

Product name	Anti-Major Basic Protein antibody
Description	Rabbit polyclonal to Major Basic Protein
Host species	Rabbit
Tested applications	Suitable for: WB, IHC-P
Species reactivity	Reacts with: Mouse, Human
Immunogen	<p>Recombinant full length protein corresponding to Human Major Basic Protein aa 17-222. Sequence:</p> <p>LHLRSETSTFETPLGAKTLPEDEETPEQEMEETPCRE LEEEEEWGSGSED ASKKDGAVES ISVPDMVDKNLTCPEEEDTVKVVGIPGCQTCRYLLVRS LQTFsqawftcr RCYRGNLVS! HNFNINyriQCSVSALNQGQVWIGGRITGSGRCRRFQW VDGSRWNfAYWA AHQPWSRGGH CVALCTRGGHWRRahCLRRLPFICSY</p> <p>Database link: P13727</p> <p style="text-align: right;"> Run BLAST with  Run BLAST with</p>
Positive control	BT474, MCF7, HL-60, Mouse kidney, Mouse heart and Mouse spleen extracts.

Properties

Form	Liquid
Storage instructions	Shipped at 4°C. Store at +4°C short term (1-2 weeks). Upon delivery aliquot. Store at -20°C long term. Avoid freeze / thaw cycle.
Storage buffer	<p>pH: 7.3 Preservative: 0.02% Sodium azide Constituents: 49% PBS, 50% Glycerol</p>
Purity	Immunogen affinity purified
Clonality	Polyclonal
Isotype	IgG

Applications

Our [Abpromise guarantee](#) covers the use of **ab187523** in the following tested applications.

The application notes include recommended starting dilutions; optimal dilutions/concentrations should be determined by the end user.

Application	Abreviews	Notes
WB		1/500 - 1/2000. Predicted molecular weight: 25 kDa.
IHC-P		1/50 - 1/200. ab171870 - Rabbit polyclonal IgG, is suitable for use as an isotype control with this antibody.

Target

Function

Cytotoxin and helminthotoxin. Also induces non-cytolytic histamine release from human basophils. Involved in antiparasitic defense mechanisms and immune hypersensitivity reactions. The proform acts as a proteinase inhibitor, reducing the activity of PAPPa.

Tissue specificity

High levels of the proform in placenta and pregnancy serum; in placenta, localized to X cells of septa and anchoring villi. Lower levels in a variety of other tissues including kidney, myometrium, endometrium, ovaries, breast, prostate, bone marrow and colon.

Sequence similarities

Contains 1 C-type lectin domain.

Developmental stage

Levels of the proform increase in serum and placenta during pregnancy.

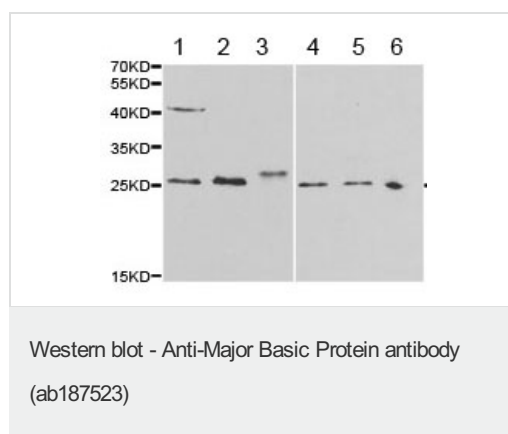
Post-translational modifications

Nitrated.

Cellular localization

Cytoplasmic vesicle > secretory vesicle. The proform is secreted. The mature protein is found in the matrix of the eosinophil's large specific granule and Secreted. The proform is secreted.

Images



All lanes : Anti-Major Basic Protein antibody (ab187523) at 1/500 dilution

Lane 1 : BT474 cell extract

Lane 2 : MCF7 cell extract

Lane 3 : HL-60 cell extract

Lane 4 : Mouse kidney extract

Lane 5 : Mouse heart extract

Lane 6 : Mouse spleen extract

Predicted band size: 25 kDa

Please note: All products are "FOR RESEARCH USE ONLY. NOT FOR USE IN DIAGNOSTIC PROCEDURES"

Our Abpromise to you: Quality guaranteed and expert technical support

- Replacement or refund for products not performing as stated on the datasheet
- Valid for 12 months from date of delivery
- Response to your inquiry within 24 hours

- We provide support in Chinese, English, French, German, Japanese and Spanish
- Extensive multi-media technical resources to help you
- We investigate all quality concerns to ensure our products perform to the highest standards

If the product does not perform as described on this datasheet, we will offer a refund or replacement. For full details of the Abpromise, please visit <https://www.abcam.com/abpromise> or contact our technical team.

Terms and conditions

- Guarantee only valid for products bought direct from Abcam or one of our authorized distributors