



Product datasheet

Anti-MALT1/MLT antibody ab118393

1 Image

Overview

Product name	Anti-MALT1/MLT antibody
Description	Goat polyclonal to MALT1/MLT
Host species	Goat
Specificity	ab118393 is expected to recognize reported isoform 2 (XP_225927.5) only.
Tested applications	Suitable for: WB
Species reactivity	Reacts with: Mouse, Rat
Immunogen	Synthetic peptide corresponding to Rat MALT1/MLT aa 325-338 (internal sequence) (Cysteine residue). Sequence: RPDNKEQTGQPLAK Database link: XP_225927.5  Run BLAST with  Run BLAST with
Positive control	Rat and Mouse kidney lysates.
General notes	This product was previously labelled as MALT1

Reproducibility is key to advancing scientific discovery and accelerating scientists' next breakthrough.

Abcam is leading the way with our range of recombinant antibodies, knockout-validated antibodies and knockout cell lines, all of which support improved reproducibility.

We are also planning to innovate the way in which we present recommended applications and species on our product datasheets, so that only applications & species that have been tested in our own labs, our suppliers or by selected trusted collaborators are covered by our Abpromise™ guarantee.

In preparation for this, we have started to update the applications & species that this product is Abpromise guaranteed for.

We are also updating the applications & species that this product has been “predicted to work with,” however this information is not covered by our Abpromise guarantee.

Applications & species from publications and Abreviews that have not been tested in our own labs or in those of our suppliers are not covered by the Abpromise guarantee.

Please check that this product meets your needs before purchasing. If you have any questions,

special requirements or concerns, please send us an inquiry and/or contact our Support team ahead of purchase. Recommended alternatives for this product can be found below, as well as customer reviews and Q&As.

Properties

Form	Liquid
Storage instructions	Shipped at 4°C. Upon delivery aliquot and store at -20°C. Avoid repeated freeze / thaw cycles.
Storage buffer	pH: 7.30 Preservative: 0.02% Sodium azide Constituents: 99% Tris buffered saline, 0.5% BSA
Purity	Immunogen affinity purified
Purification notes	ab118393 is purified from Goat serum by ammonium sulphate precipitation followed by antigen affinity chromatography using the immunizing peptide.
Clonality	Polyclonal
Isotype	IgG

Applications

Our [Abpromise guarantee](#) covers the use of **ab118393** in the following tested applications.

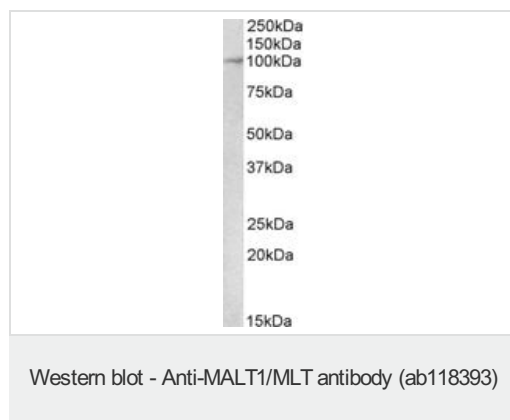
The application notes include recommended starting dilutions; optimal dilutions/concentrations should be determined by the end user.

Application	Abreviews	Notes
WB		Use a concentration of 1 - 3 µg/ml. Detects a band of approximately 100 kDa (predicted molecular weight: 92 kDa). 1 hour primary incubation is recommended for this product.

Target

Function	Enhances BCL10-induced activation of NF-kappa-B. Involved in nuclear export of BCL10. Binds to TRAF6, inducing TRAF6 oligomerization and activation of its ligase activity. Has ubiquitin ligase activity. MALT1-dependent BCL10 cleavage plays an important role in T-cell antigen receptor-induced integrin adhesion.
Tissue specificity	Highly expressed in peripheral blood mononuclear cells. Detected at lower levels in bone marrow, thymus and lymph node, and at very low levels in colon and lung.
Involvement in disease	Note=A chromosomal aberration involving MALT1 is recurrent in low-grade mucosa-associated lymphoid tissue (MALT lymphoma). Translocation t(11;18)(q21;q21) with BIRC2. This translocation is found in approximately 50% of cytogenetically abnormal low-grade MALT lymphoma.
Sequence similarities	Belongs to the peptidase C14B family. Contains 1 death domain. Contains 2 Ig-like C2-type (immunoglobulin-like) domains.
Cellular localization	Cytoplasm > perinuclear region. Nucleus. Shuttles between the nucleus and cytoplasm. Found in perinuclear structures together with BCL10.

Images



Anti-MALT1/MLT antibody (ab118393) at 2 µg/ml (for 1 hour) +
Mouse Kidney lysate (in RIPA buffer) at 35 µg

Developed using the ECL technique.

Predicted band size: 92 kDa

Please note: All products are "FOR RESEARCH USE ONLY. NOT FOR USE IN DIAGNOSTIC PROCEDURES"

Our Abpromise to you: Quality guaranteed and expert technical support

- Replacement or refund for products not performing as stated on the datasheet
- Valid for 12 months from date of delivery
- Response to your inquiry within 24 hours
- We provide support in Chinese, English, French, German, Japanese and Spanish
- Extensive multi-media technical resources to help you
- We investigate all quality concerns to ensure our products perform to the highest standards

If the product does not perform as described on this datasheet, we will offer a refund or replacement. For full details of the Abpromise, please visit <https://www.abcam.com/abpromise> or contact our technical team.

Terms and conditions

- Guarantee only valid for products bought direct from Abcam or one of our authorized distributors