

Product datasheet

Anti-Maltose Binding Protein antibody ab21144

★★★★☆ 3 Abreviews 1 References 1 Image

Overview

Product name	Anti-Maltose Binding Protein antibody
Description	Rabbit polyclonal to Maltose Binding Protein
Host species	Rabbit
Tested applications	Suitable for: WB, ELISA
Species reactivity	Maltose binding protein tag
Immunogen	Recombinant full length protein.

Properties

Form	Liquid
Storage instructions	Shipped at 4°C. Upon delivery aliquot and store at -20°C. Avoid freeze / thaw cycles.
Storage buffer	Preservative: 0.1% Sodium Azide Constituents: PBS, pH 7.2
Purity	Immunogen affinity purified
Clonality	Polyclonal
Isotype	IgG

Applications

Our [Abpromise guarantee](#) covers the use of **ab21144** in the following tested applications.

The application notes include recommended starting dilutions; optimal dilutions/concentrations should be determined by the end user.

Application	Abreviews	Notes
WB	★★★★★	1/5000. Detects a band of approximately 44 kDa. Dilution optimised using Chromogenic detection.
ELISA	★★★★★	1/10000.

Target

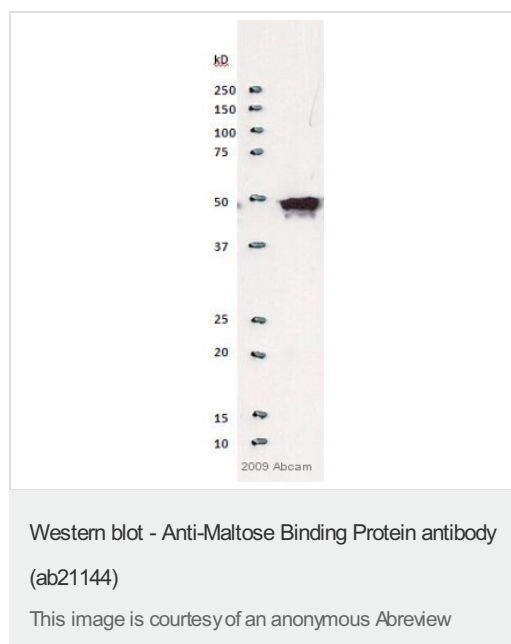
Relevance

Epitope tagging offers an easy and universal strategy for the identification and purification of proteins derived by recombinant DNA technology. The insertion of a Maltose Binding Protein (MBP) tag creates a stable fusion product that does not interfere with the bioactivity of the protein or with the biodistribution of the MBP tagged product. Cleavage by factor Xa separates MBP from its partner protein.

Cellular localization

Periplasm

Images



Anti-Maltose Binding Protein antibody (ab21144) at 1/5000 dilution

Secondary

Anti-Rabbit antibody (Sigma A0545) at 1/16000 dilution

Developed using the ECL technique.

Observed band size: 47.5 kDa

[why is the actual band size different from the predicted?](#)

Exposure time: 5 seconds

Please note: All products are "FOR RESEARCH USE ONLY. NOT FOR USE IN DIAGNOSTIC PROCEDURES"

Our Abpromise to you: Quality guaranteed and expert technical support

- Replacement or refund for products not performing as stated on the datasheet
- Valid for 12 months from date of delivery
- Response to your inquiry within 24 hours
- We provide support in Chinese, English, French, German, Japanese and Spanish
- Extensive multi-media technical resources to help you
- We investigate all quality concerns to ensure our products perform to the highest standards

If the product does not perform as described on this datasheet, we will offer a refund or replacement. For full details of the Abpromise, please visit <https://www.abcam.com/abpromise> or contact our technical team.

Terms and conditions

- Guarantee only valid for products bought direct from Abcam or one of our authorized distributors