

## Product datasheet

# Anti-MAN2B2 antibody ab127571

2 Images

### Overview

<b>Product name</b>	Anti-MAN2B2 antibody
<b>Description</b>	Rabbit polyclonal to MAN2B2
<b>Host species</b>	Rabbit

### Tested Applications & Species

Application	Species
IHC-P	Human
WB	Human

See all applications and species data

**Immunogen** Recombinant fragment, corresponding to a region within N terminal amino acids 1-205 of Human MAN2B2 (Q9Y2E5).

**Positive control** A549 and HepG2 whole cell lysate ([ab7900](#)); Human colon carcinoma tissue.

### Properties

<b>Form</b>	Liquid
<b>Storage instructions</b>	Shipped at 4°C. Upon delivery aliquot. Store at -20°C or -80°C. Avoid freeze / thaw cycle.
<b>Storage buffer</b>	pH: 7.00 Preservative: 0.01% Thimerosal (merthiolate) Constituents: 1.21% Tris, 0.75% Glycine, 20% Glycerol (glycerin, glycerine)
<b>Purity</b>	Immunogen affinity purified
<b>Clonality</b>	Polyclonal
<b>Isotype</b>	IgG

### Applications

**The Abpromise guarantee** Our [Abpromise guarantee](#) covers the use of **ab127571** in the following tested applications. The application notes include recommended starting dilutions; optimal dilutions/concentrations should be determined by the end user.

**✓ Guaranteed**

Tested applications are guaranteed to work and covered by our Abpromise guarantee.

**⚠ Predicted**

Predicted to work for this combination of applications and species but not guaranteed.

**✗ Incompatible**

Does not work for this combination of applications and species.

Application	Species
IHC-P	✓ Human
WB	✓ Human

Application	Abreviews	Notes
WB		1/500 - 1/3000. Predicted molecular weight: 114 kDa.
IHC-P		1/100 - 1/500. Perform heat mediated antigen retrieval with citrate buffer pH 6 before commencing with IHC staining protocol.

### Target

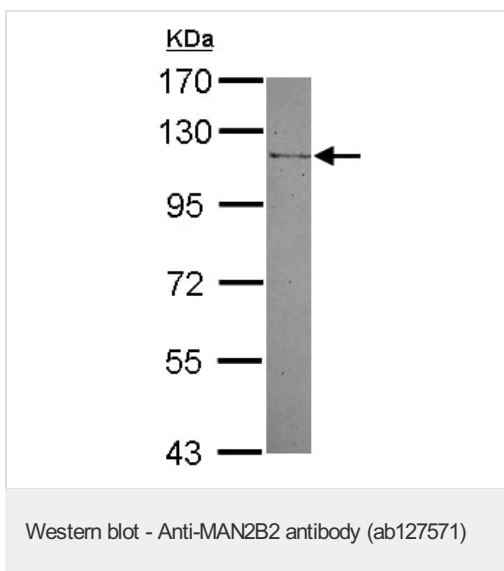
#### Relevance

MAN2B2 (Mannosidase alpha class 2B member 2) hydrolyses terminal, non-reducing alpha-D-mannose residues in alpha-D-mannosides.

#### Cellular localization

Secreted

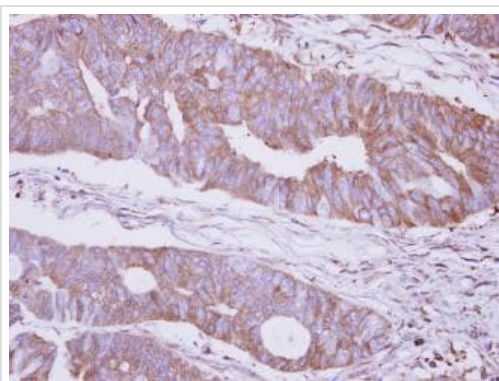
### Images



Anti-MAN2B2 antibody (ab127571) at 1/1000 dilution + A549 whole cell lysate at 30 µg

**Predicted band size:** 114 kDa

7.5% SDS PAGE



ab127571 at 1/250 dilution staining paraffin-embedded MAN2B2 in Human colon carcinoma tissue by Immunohistochemistry.

Immunohistochemistry (Formalin/PFA-fixed paraffin-embedded sections) - Anti-MAN2B2 antibody (ab127571)

**Please note:** All products are "FOR RESEARCH USE ONLY. NOT FOR USE IN DIAGNOSTIC PROCEDURES"

### Our Abpromise to you: Quality guaranteed and expert technical support

---

- Replacement or refund for products not performing as stated on the datasheet
- Valid for 12 months from date of delivery
- Response to your inquiry within 24 hours
  
- We provide support in Chinese, English, French, German, Japanese and Spanish
- Extensive multi-media technical resources to help you
- We investigate all quality concerns to ensure our products perform to the highest standards

If the product does not perform as described on this datasheet, we will offer a refund or replacement. For full details of the Abpromise, please visit <https://www.abcam.com/abpromise> or contact our technical team.

### Terms and conditions

---

- Guarantee only valid for products bought direct from Abcam or one of our authorized distributors