

Product datasheet

Anti-Mannose Receptor antibody [EPR6828(B)] ab125028

Recombinant RabMAb

★★★★☆ 4 Abreviews 6 References 5 Images

Overview

Product name	Anti-Mannose Receptor antibody [EPR6828(B)]
Description	Rabbit monoclonal [EPR6828(B)] to Mannose Receptor
Host species	Rabbit
Tested applications	Suitable for: WB, Flow Cyt, ICC/IF Unsuitable for: IHC-P or IP
Species reactivity	Reacts with: Mouse, Rat, Human
Immunogen	Synthetic peptide within Human Mannose Receptor aa 1400 to the C-terminus. The exact sequence is proprietary. Database link: P22897
Positive control	WB: HeLa membrane extract lysate (ab29547), BxPC3, Caco2, HepG2, Raw264.7 and 293T lysates, Human fetal liver tissue lysate, human, mouse and Rat brain. ICC/IF: MOLT-4 cells FC: Molt-4 cells
General notes	Our RabMAb [®] technology is a patented hybridoma-based technology for making rabbit monoclonal antibodies. For details on our patents, please refer to RabMab[®] patents . We are constantly working hard to ensure we provide our customers with best in class antibodies. As a result of this work we are pleased to now offer this antibody in purified format. We are in the process of updating our datasheets. The purified format is designated 'PUR' on our product labels. If you have any questions regarding this update, please contact our Scientific Support team. This product is a recombinant rabbit monoclonal antibody .

Properties

Form	Liquid
Storage instructions	Shipped at 4°C. Store at +4°C short term (1-2 weeks). Upon delivery aliquot. Store at -20°C. Stable for 12 months at -20°C.
Dissociation constant (K_D)	K _D = 1.75 x 10 ⁻¹⁰ M





[Learn more about K_D](#)

Storage buffer	pH: 7.40 Preservative: 0.01% Sodium azide Constituents: 40% Glycerol, PBS, 0.05% BSA
Purity	Protein A purified
Clonality	Monoclonal
Clone number	EPR6828(B)
Isotype	IgG

Applications

Our [Abpromise guarantee](#) covers the use of **ab125028** in the following tested applications.

The application notes include recommended starting dilutions; optimal dilutions/concentrations should be determined by the end user.

Application	Abreviews	Notes
WB	★★★★☆	1/1000 - 1/10000. Detects a band of approximately 170 kDa (predicted molecular weight: 166 kDa).
Flow Cyt		Use at an assay dependent concentration. ab172730 - Rabbit monoclonal IgG, is suitable for use as an isotype control with this antibody.
ICC/IF	★★★★★	Use a concentration of 1 µg/ml.

Application notes Is unsuitable for IHC-P or IP.

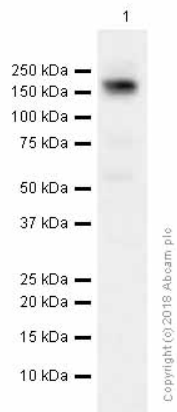
Target

Function Mediates the endocytosis of glycoproteins by macrophages. Binds both sulfated and non-sulfated polysaccharide chains. Acts as phagocytic receptor for bacteria, fungi and other pathogens.

Sequence similarities Contains 8 C-type lectin domains.
Contains 1 fibronectin type-II domain.
Contains 1 ricin B-type lectin domain.

Cellular localization Membrane.

Images



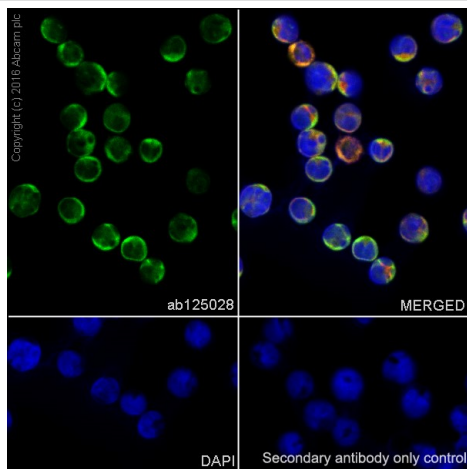
Western blot - Anti-Mannose Receptor antibody
[EPR6828(B)] (ab125028)

Anti-Mannose Receptor antibody [EPR6828(B)] (ab125028) at 1/1000 dilution + HEK-293 (Human embryonic kidney) whole cell lysates at 15 µg

Secondary

Goat Anti-Rabbit IgG H&L (HRP) (ab97051) at 1/20000 dilution

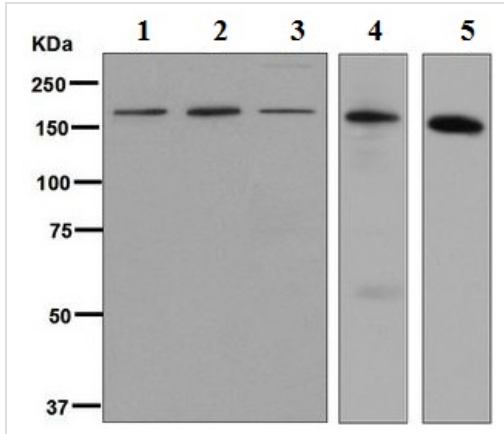
Predicted band size: 166 kDa



Immunocytochemistry/ Immunofluorescence - Anti-Mannose Receptor antibody [EPR6828(B)] (ab125028)

Immunocytochemistry/Immunofluorescence analysis MOLT-4 (Human lymphoblastic leukemia) cells labeling Mannose Receptor with ab125028 at 1 µg/mL. Cells were fixed with 100% methanol. ab150081, an AlexaFluor[®]488 Goat anti-Rabbit at 1/1000 was used as the secondary antibody. Cells were counter-stained with ab195889 Anti-Alpha Tubulin antibody [DM1A] (1/250) - Microtubule Marker (Alexa Fluor[®] 594). Nuclei were counterstained with DAPI (blue).

Confocal image showing membranous staining on MOLT-4 cell line.



Western blot - Anti-Mannose Receptor antibody [EPR6828(B)] (ab125028)

All lanes : Anti-Mannose Receptor antibody [EPR6828(B)] (ab125028) at 1/1000 dilution

Lane 1 : BxPC3 lysate

Lane 2 : Caco2 lysate

Lane 3 : HepG2 lysate

Lane 4 : Human fetal liver lysate

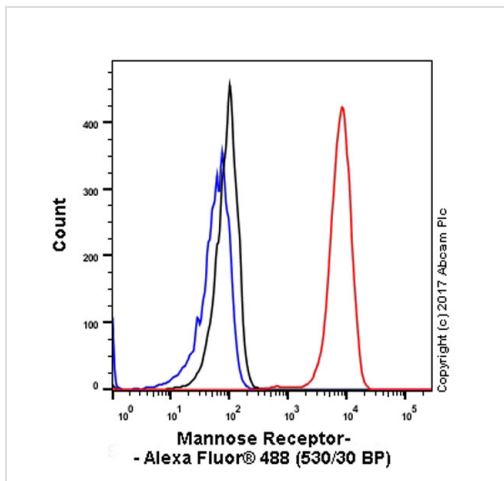
Lane 5 : 293T lysate

Lysates/proteins at 10 µg per lane.

Secondary

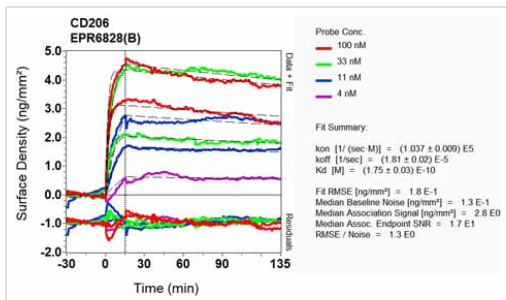
All lanes : HRP labelled goat anti rabbit at 1/2000 dilution

Predicted band size: 166 kDa



Flow Cytometry - Anti-Mannose Receptor antibody [EPR6828(B)] (ab125028)

Flow Cytometry analysis of Molt-4 (human acute lymphoblastic leukemia) cells labeling Mannose Receptor with unpurified ab125028 at 1/200 dilution (10ug/ml) (red). Cells were fixed with 4% paraformaldehyde and permeabilised with 90% methanol. A Goat anti rabbit IgG (Alexa Fluor® 488)(1/2000 dilution) was used as the secondary antibody. Rabbit monoclonal IgG (Black) was used as the isotype control, cells without incubation with primary antibody and secondary antibody (Blue) were used as the unlabeled control.



Other - Anti-Mannose Receptor antibody
 [EPR6828(B)] (ab125028)

Equilibrium dissociation constant (K_D)

Learn more about K_D

[Click here to learn more about \$K_D\$](#)

Please note: All products are "FOR RESEARCH USE ONLY. NOT FOR USE IN DIAGNOSTIC PROCEDURES"

Our Abpromise to you: Quality guaranteed and expert technical support

- Replacement or refund for products not performing as stated on the datasheet
- Valid for 12 months from date of delivery
- Response to your inquiry within 24 hours
- We provide support in Chinese, English, French, German, Japanese and Spanish
- Extensive multi-media technical resources to help you
- We investigate all quality concerns to ensure our products perform to the highest standards

If the product does not perform as described on this datasheet, we will offer a refund or replacement. For full details of the Abpromise, please visit <https://www.abcam.com/abpromise> or contact our technical team.

Terms and conditions

- Guarantee only valid for products bought direct from Abcam or one of our authorized distributors