

Product datasheet

Anti-MAP2 antibody [AP-20] ab11268

★★★★★ 6 Abreviews 20 References 2 Images

Overview

Product name	Anti-MAP2 antibody [AP-20]
Description	Mouse monoclonal [AP-20] to MAP2
Host species	Mouse
Tested applications	Suitable for: ICC/IF, IHC-P
Species reactivity	Reacts with: Mouse, Rat, Cow, Xenopus laevis, Zebrafish, Quail, Salamander
Immunogen	Full length native protein (purified) corresponding to Cow MAP2.
Positive control	ICC: Mouse Cell (Cortical neuron culture)
General notes	<p>This product was changed from ascites to tissue culture supernatant on 25th October 2016. The following lot(s) is/are from ascites and is still in stock as of 25th October 2016- GR143561. Lot numbers higher than GR143561 will be from tissue culture supernatant. Please note that the dilutions may need to be adjusted accordingly.</p> <p>Storage in frost-free freezers is not recommended. If slight turbidity occurs upon prolonged storage, clarify the solution by centrifugation before use.</p> <p>Reproducibility is key to advancing scientific discovery and accelerating scientists' next breakthrough.</p> <p>Abcam is leading the way with our range of recombinant antibodies, knockout-validated antibodies and knockout cell lines, all of which support improved reproducibility.</p> <p>We are also planning to innovate the way in which we present recommended applications and species on our product datasheets, so that only applications & species that have been tested in our own labs, our suppliers or by selected trusted collaborators are covered by our Abpromise™ guarantee.</p> <p>In preparation for this, we have started to update the applications & species that this product is Abpromise guaranteed for.</p> <p>We are also updating the applications & species that this product has been “predicted to work with,” however this information is not covered by our Abpromise guarantee.</p> <p>Applications & species from publications and Abreviews that have not been tested in our own labs or in those of our suppliers are not covered by the Abpromise guarantee.</p> <p>Please check that this product meets your needs before purchasing. If you have any questions, special requirements or concerns, please send us an inquiry and/or contact our Support team ahead of purchase. Recommended alternatives for this product can be found below, as well as customer reviews and Q&As.</p>

Properties

Form	Liquid
Storage instructions	Shipped at 4°C. Upon delivery aliquot and store at -20°C or -80°C. Avoid repeated freeze / thaw cycles.
Storage buffer	pH: 7.40 Preservative: 0.097% Sodium azide Constituent: PBS
Purity	Proprietary Purification
Purification notes	Purified from Tissue culture supernatant.
Clonality	Monoclonal
Clone number	AP-20
Isotype	IgG1

Applications

Our [Abpromise guarantee](#) covers the use of **ab11268** in the following tested applications.

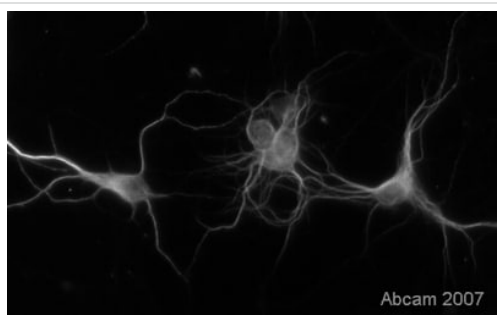
The application notes include recommended starting dilutions; optimal dilutions/concentrations should be determined by the end user.

Application	Abreviews	Notes
ICC/IF	★★★★★	Use at an assay dependent concentration.
IHC-P	★★★★☆	1/5000. Use at an assay dependent concentration.

Target

Function	The exact function of MAP2 is unknown but MAPs may stabilize the microtubules against depolymerization. They also seem to have a stiffening effect on microtubules.
Sequence similarities	Contains 3 Tau/MAP repeats.
Post-translational modifications	Phosphorylated at serine residues in K-X-G-S motifs by MAP/microtubule affinity-regulating kinase (MARK1 or MARK2), causing detachment from microtubules, and their disassembly (By similarity). Isoform 2 is probably phosphorylated by PKA at Ser-323, Ser-354 and Ser-386 and by FYN at Tyr-67.
Cellular localization	Cytoplasm, cytoskeleton.

Images



Immunocytochemistry/ Immunofluorescence - Anti-MAP2 antibody [AP-20] (ab11268)

This image is courtesy of Randal Moldrich, Queensland Brain Institute, Australia

Mouse monoclonal [AP-20] to MAP2 - Neuronal Marker (ab11268) used at a dilution of 1/500 in Immunocytochemistry/Immunofluorescence on Mouse Cell (Cortical neuron culture). Fixative: Paraformaldehyde. Blocking step: 2% Serum incubated for 1 hour at RT. Secondary Antibody: Goat anti-mouse AlexaFluor 594 Conjugation: Alexa Fluor® 594; 1/1000



Immunohistochemistry (Formalin/PFA-fixed paraffin-embedded sections) - Anti-MAP2 antibody [AP-20] (ab11268)

This image is courtesy of Randal Moldrich, Queensland Brain Institute, Australia

ab11268 staining MAP2 in E16 mouse brain neocortex (bottom is dorsal) by immunohistochemistry. Free-floating sections were incubated with ab11268 (1/5000) for 2 hours at 21°C. Bound antibody was detected using a biotinylated donkey anti-mouse IgG antibody. This image is courtesy of an Abreview submitted by Randal Moldrich, 6 March 2008.

Please note: All products are "FOR RESEARCH USE ONLY. NOT FOR USE IN DIAGNOSTIC PROCEDURES"

Our Abpromise to you: Quality guaranteed and expert technical support

- Replacement or refund for products not performing as stated on the datasheet
- Valid for 12 months from date of delivery
- Response to your inquiry within 24 hours
- We provide support in Chinese, English, French, German, Japanese and Spanish
- Extensive multi-media technical resources to help you
- We investigate all quality concerns to ensure our products perform to the highest standards

If the product does not perform as described on this datasheet, we will offer a refund or replacement. For full details of the Abpromise, please visit <https://www.abcam.com/abpromise> or contact our technical team.

Terms and conditions

- Guarantee only valid for products bought direct from Abcam or one of our authorized distributors