

Product datasheet

Anti-MARK1 (phospho T215) antibody [EPR5463]
 ab126731

Recombinant RabMAb

2 Images

Overview

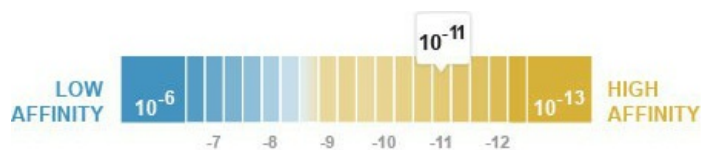
Product name	Anti-MARK1 (phospho T215) antibody [EPR5463]
Description	Rabbit monoclonal [EPR5463] to MARK1 (phospho T215)
Host species	Rabbit
Tested applications	Suitable for: WB Unsuitable for: Flow Cyt, ICC/IF, IHC-P or IP
Species reactivity	Reacts with: Mouse, Rat, Human
Immunogen	Synthetic phosphopeptide corresponding to residues surrounding Threonine 215 of Human MARK1 (UniProt Q9P0L2).
Positive control	SH-SY5Y cell lysates, treated with Okadaic acid and Calyculin A.
General notes	

Our RabMAb[®] technology is a patented hybridoma-based technology for making rabbit monoclonal antibodies. For details on our patents, please refer to [RabMAb[®] patents](#).

This product is a [recombinant rabbit monoclonal antibody](#).

Properties

Form	Liquid
Storage instructions	Shipped at 4°C. Store at -20°C. Stable for 12 months at -20°C.
Dissociation constant (K_D)	K _D = 1.62 x 10 ⁻¹¹ M



[Learn more about K_D](#)

Storage buffer	pH: 7.20 Preservative: 0.01% Sodium azide Constituents: 9% PBS, 40% Glycerol, 0.05% BSA, 50% Tissue culture supernatant
-----------------------	---

Purity	Tissue culture supernatant
Clonality	Monoclonal
Clone number	EPR5463
Isotype	IgG

Applications

Our [Abpromise guarantee](#) covers the use of **ab126731** in the following tested applications.

The application notes include recommended starting dilutions; optimal dilutions/concentrations should be determined by the end user.

Application	Abreviews	Notes
WB		1/10000 - 1/50000. Detects a band of approximately 110 kDa (predicted molecular weight: 89 kDa).

Application notes Is unsuitable for Flow Cyt, ICC/IF, IHC-P or IP.

Target

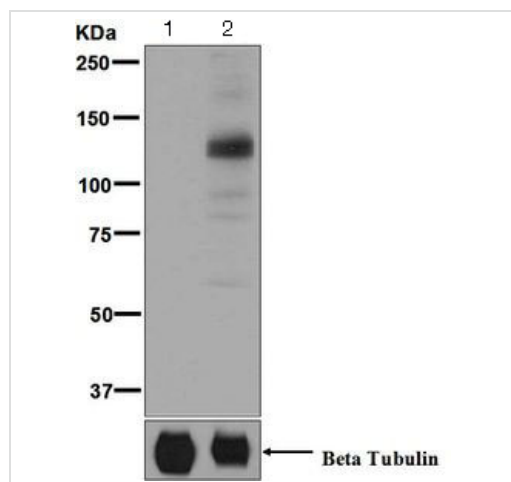
Function May play a role in cytoskeletal stability.

Tissue specificity Highly expressed in heart, skeletal muscle, brain, fetal brain and fetal kidney.

Sequence similarities Belongs to the protein kinase superfamily. CAMK Ser/Thr protein kinase family. MARK subfamily. Contains 1 KA1 (kinase-associated) domain. Contains 1 protein kinase domain. Contains 1 UBA domain.

Cellular localization Cytoplasm > cytoskeleton. Appears to localize to an intracellular network.

Images



Western blot - Anti-MARK1 (phospho T215) antibody [EPR5463] (ab126731)

All lanes : Anti-MARK1 (phospho T215) antibody [EPR5463] (ab126731) at 1/10000 dilution

Lane 1 : SH-SY5Y cell lysate, untreated

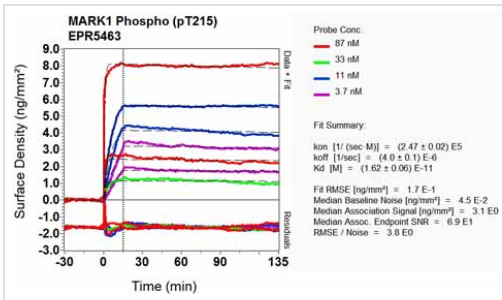
Lane 2 : SH-SY5Y cell lysate, treated with Okadaic acid and Calyculin A

Lysates/proteins at 10 µg per lane.

Secondary

All lanes : HRP labelled goat anti-rabbit at 1/2000 dilution

Predicted band size: 89 kDa



Other - Anti-MARK1 (phospho T215) antibody
[EPR5463] (ab126731)

Equilibrium disassociation constant (K_D)

Learn more about K_D

[Click here to learn more about \$K_D\$](#)

Please note: All products are "FOR RESEARCH USE ONLY. NOT FOR USE IN DIAGNOSTIC PROCEDURES"

Our Abpromise to you: Quality guaranteed and expert technical support

- Replacement or refund for products not performing as stated on the datasheet
- Valid for 12 months from date of delivery
- Response to your inquiry within 24 hours
- We provide support in Chinese, English, French, German, Japanese and Spanish
- Extensive multi-media technical resources to help you
- We investigate all quality concerns to ensure our products perform to the highest standards

If the product does not perform as described on this datasheet, we will offer a refund or replacement. For full details of the Abpromise, please visit <https://www.abcam.com/abpromise> or contact our technical team.

Terms and conditions

- Guarantee only valid for products bought direct from Abcam or one of our authorized distributors