

Product datasheet

Anti-MAT2A antibody - N-terminal ab186129

1 Image

Overview

Product name	Anti-MAT2A antibody - N-terminal
Description	Rabbit polyclonal to MAT2A - N-terminal
Host species	Rabbit
Tested applications	Suitable for: WB
Species reactivity	<p>Reacts with: Mouse, Human</p> <p>Predicted to work with: Rat, Chicken, Cat, Dog, Chimpanzee, Zebrafish, Cynomolgus monkey, Rhesus monkey, Gorilla, Orangutan </p>
Immunogen	<p>Synthetic peptide within Human MAT2A aa 1-50 (N terminal). The exact sequence is proprietary. (NP_005902.1).</p> <p>Sequence:</p> <p>MNGQLNGFHEAFIEEGTFLFTSESVGEGHPDKICDQISDA VLDAHLQQDP</p> <p>Database link: P31153</p> <p style="text-align: right;"> Run BLAST with Run BLAST with </p>
Positive control	HeLa, 293T, Jurkat and NIH 3T3 whole cell lysates.
General notes	<p>Reproducibility is key to advancing scientific discovery and accelerating scientists' next breakthrough.</p> <p>Abcam is leading the way with our range of recombinant antibodies, knockout-validated antibodies and knockout cell lines, all of which support improved reproducibility.</p> <p>We are also planning to innovate the way in which we present recommended applications and species on our product datasheets, so that only applications & species that have been tested in our own labs, our suppliers or by selected trusted collaborators are covered by our Abpromise™ guarantee.</p> <p>In preparation for this, we have started to update the applications & species that this product is Abpromise guaranteed for.</p> <p>We are also updating the applications & species that this product has been “predicted to work with,” however this information is not covered by our Abpromise guarantee.</p> <p>Applications & species from publications and Abreviews that have not been tested in our own labs or in those of our suppliers are not covered by the Abpromise guarantee.</p> <p>Please check that this product meets your needs before purchasing. If you have any questions, special requirements or concerns, please send us an inquiry and/or contact our Support team</p>

ahead of purchase. Recommended alternatives for this product can be found below, as well as customer reviews and Q&As.

Properties

Form	Liquid
Storage instructions	Shipped at 4°C. Store at +4°C short term (1-2 weeks). Upon delivery aliquot. Store at -20°C long term. Avoid freeze / thaw cycle.
Storage buffer	pH: 7 Preservative: 0.09% Sodium azide Constituent: 99% Tris citrate/phosphate
Purity	pH 7 to 8 Immunogen affinity purified
Purification notes	ab186129 was affinity purified using an epitope specific to MAT2A immobilized on solid support.
Clonality	Polyclonal
Isotype	IgG

Applications

Our [Abpromise guarantee](#) covers the use of **ab186129** in the following tested applications.

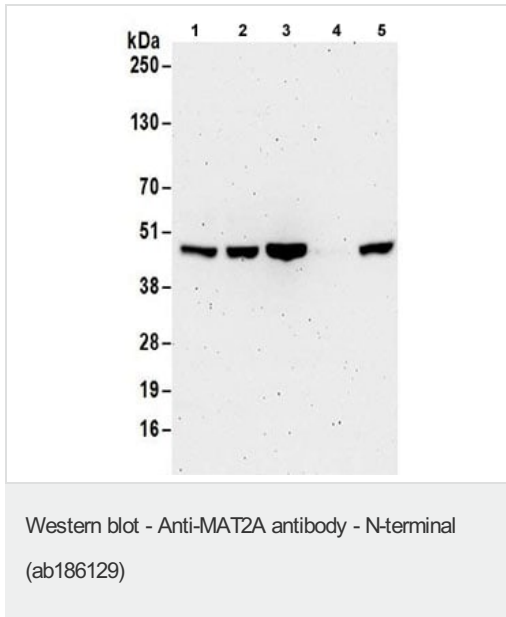
The application notes include recommended starting dilutions; optimal dilutions/concentrations should be determined by the end user.

Application	Abreviews	Notes
WB		1/2000 - 1/10000. Predicted molecular weight: 44 kDa.

Target

Function	Catalyzes the formation of S-adenosylmethionine from methionine and ATP.
Pathway	Amino-acid biosynthesis; S-adenosyl-L-methionine biosynthesis; S-adenosyl-L-methionine from L-methionine: step 1/1.
Sequence similarities	Belongs to the AdoMet synthase family.
Post-translational modifications	The alpha' subunit is a post-translationally modified version of MAT2A.

Images



All lanes : Anti-MAT2A antibody - N-terminal (ab186129) at 0.1 µg/ml

Lane 1 : HeLa whole cell lysate

Lane 2 : 293T whole cell lysate

Lane 3 : Jurkat whole cell lysate

Lane 4 : TCMK-1 whole cell lysate

Lane 5 : NIH 3T3 whole cell lysate

Lysates/proteins at 50 µg per lane.

Developed using the ECL technique.

Predicted band size: 44 kDa

Exposure time: 3 minutes

Please note: All products are "FOR RESEARCH USE ONLY. NOT FOR USE IN DIAGNOSTIC PROCEDURES"

Our Abpromise to you: Quality guaranteed and expert technical support

- Replacement or refund for products not performing as stated on the datasheet
- Valid for 12 months from date of delivery
- Response to your inquiry within 24 hours
- We provide support in Chinese, English, French, German, Japanese and Spanish
- Extensive multi-media technical resources to help you
- We investigate all quality concerns to ensure our products perform to the highest standards

If the product does not perform as described on this datasheet, we will offer a refund or replacement. For full details of the Abpromise, please visit <https://www.abcam.com/abpromise> or contact our technical team.

Terms and conditions

- Guarantee only valid for products bought direct from Abcam or one of our authorized distributors