

Product datasheet

Anti-MCEE antibody [OT11B5] ab236397

7 Images

Overview

Product name	Anti-MCEE antibody [OT11B5]
Description	Mouse monoclonal [OT11B5] to MCEE
Host species	Mouse
Tested applications	Suitable for: WB, IHC-P
Species reactivity	Reacts with: Human
Immunogen	Recombinant full length protein corresponding to Human MCEE. Produced in E.coli (NP_115990). Database link: Q96PE7
Positive control	WB: pCMV6-ENTRY MCEE cDNA transfected HEK-293T cell lysate. IHC-P: Human colon adenocarcinoma, pancreas carcinoma, endometrium adenocarcinoma, prostate, prostate adenocarcinoma and bladder tissue.
General notes	<p>Clone OT11B5 (formerly 1B5).</p> <p>Reproducibility is key to advancing scientific discovery and accelerating scientists' next breakthrough.</p> <p>Abcam is leading the way with our range of recombinant antibodies, knockout-validated antibodies and knockout cell lines, all of which support improved reproducibility.</p> <p>We are also planning to innovate the way in which we present recommended applications and species on our product datasheets, so that only applications & species that have been tested in our own labs, our suppliers or by selected trusted collaborators are covered by our Abpromise™ guarantee.</p> <p>In preparation for this, we have started to update the applications & species that this product is Abpromise guaranteed for.</p> <p>We are also updating the applications & species that this product has been "predicted to work with," however this information is not covered by our Abpromise guarantee.</p> <p>Applications & species from publications and Abreviews that have not been tested in our own labs or in those of our suppliers are not covered by the Abpromise guarantee.</p> <p>Please check that this product meets your needs before purchasing. If you have any questions, special requirements or concerns, please send us an inquiry and/or contact our Support team ahead of purchase. Recommended alternatives for this product can be found below, as well as customer reviews and Q&As.</p>

Properties

Form	Liquid
Storage instructions	Shipped at 4°C. Store at +4°C short term (1-2 weeks). Upon delivery aliquot. Store at -20°C long term. Avoid freeze / thaw cycle.
Storage buffer	pH: 7.30 Preservative: 0.02% Sodium azide Constituents: PBS, 1% BSA, 50% Glycerol
Purity	Affinity purified
Purification notes	Purified from cell culture supernatant.
Clonality	Monoclonal
Clone number	OT11B5
Isotype	IgG2b

Applications

Our [Abpromise guarantee](#) covers the use of **ab236397** in the following tested applications.

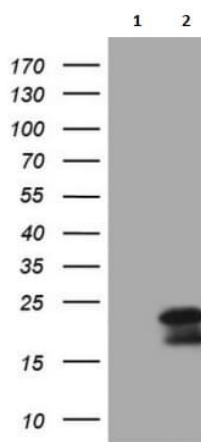
The application notes include recommended starting dilutions; optimal dilutions/concentrations should be determined by the end user.

Application	Abreviews	Notes
WB		1/2000. Predicted molecular weight: 19 kDa.
IHC-P		1/150. Heat-induced epitope retrieval by Tris-EDTA, pH 8.0.

Target

Involvement in disease	Defects in MCEE are a cause of methylmalonyl-CoA epimerase deficiency (MCEE deficiency) [MIM:251120]; also known as methylmalonyl-CoA racemase deficiency or methylmalonic aciduria type 3. MCEE deficiency is an autosomal recessive inborn error of amino acid metabolism, involving valine, threonine, isoleucine and methionine. This organic aciduria may present in the neonatal period with life-threatening metabolic acidosis, hyperammonemia, feeding difficulties, pancytopenia and coma.
Sequence similarities	Belongs to the glyoxalase I family.
Cellular localization	Mitochondrion.

Images



Western blot - Anti-MCEE antibody [OT11B5]
(ab236397)

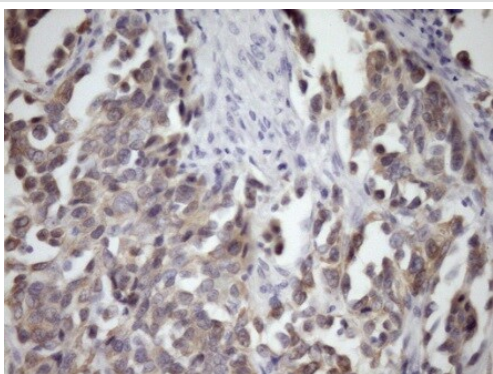
All lanes : Anti-MCEE antibody [OT11B5] (ab236397) at 1/2000 dilution

Lane 1 : pCMV6-ENTRY control cDNA transfected HEK-293T (human epithelial cell line from embryonic kidney transformed with large T antigen) cell lysate

Lane 2 : pCMV6-ENTRY MCEE cDNA transfected HEK-293T (human epithelial cell line from embryonic kidney transformed with large T antigen) cell lysate

Lysates/proteins at 5 µg per lane.

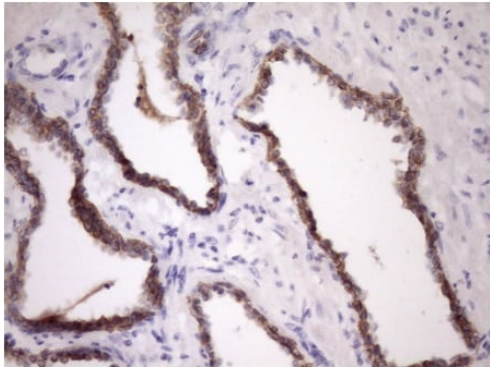
Predicted band size: 19 kDa



Immunohistochemistry (Formalin/PFA-fixed paraffin-embedded sections) - Anti-MCEE antibody [OT11B5]
(ab236397)

Paraffin-embedded human bladder tissue stained for MCEE using ab236397 at 1/150 dilution in immunohistochemical analysis.

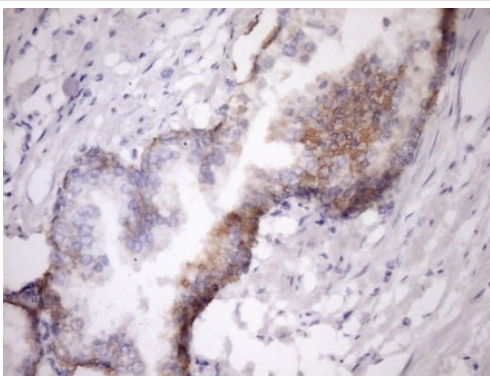
Heat-induced epitope retrieval was performed using Tris-EDTA, pH 8.0.



Immunohistochemistry (Formalin/PFA-fixed paraffin-embedded sections) - Anti-MCEE antibody [OT11B5] (ab236397)

Paraffin-embedded human prostate carcinoma tissue stained for MCEE using ab236397 at 1/150 dilution in immunohistochemical analysis.

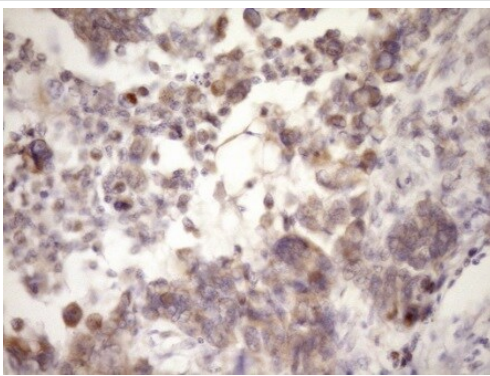
Heat-induced epitope retrieval was performed using Tris-EDTA, pH 8.0.



Immunohistochemistry (Formalin/PFA-fixed paraffin-embedded sections) - Anti-MCEE antibody [OT11B5] (ab236397)

Paraffin-embedded human prostate tissue stained for MCEE using ab236397 at 1/150 dilution in immunohistochemical analysis.

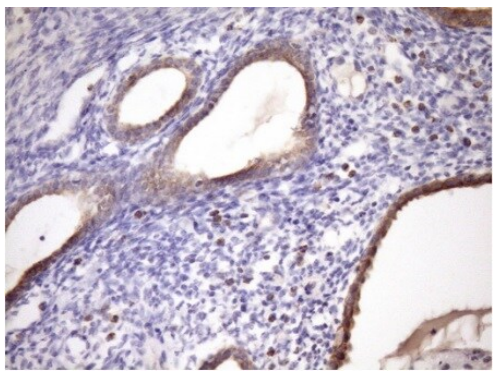
Heat-induced epitope retrieval was performed using Tris-EDTA, pH 8.0.



Immunohistochemistry (Formalin/PFA-fixed paraffin-embedded sections) - Anti-MCEE antibody [OT11B5] (ab236397)

Paraffin-embedded human endometrium adenocarcinoma tissue stained for MCEE using ab236397 at 1/150 dilution in immunohistochemical analysis.

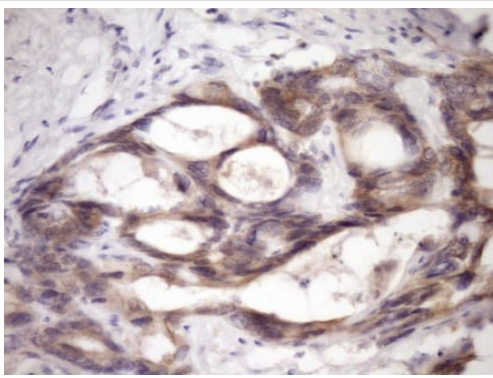
Heat-induced epitope retrieval was performed using Tris-EDTA, pH 8.0.



Immunohistochemistry (Formalin/PFA-fixed paraffin-embedded sections) - Anti-MCEE antibody [OT11B5] (ab236397)

Paraffin-embedded human pancreas carcinoma tissue stained for MCEE using ab236397 at 1/150 dilution in immunohistochemical analysis.

Heat-induced epitope retrieval was performed using Tris-EDTA, pH 8.0.



Immunohistochemistry (Formalin/PFA-fixed paraffin-embedded sections) - Anti-MCEE antibody [OT11B5] (ab236397)

Paraffin-embedded human colon adenocarcinoma tissue stained for MCEE using ab236397 at 1/150 dilution in immunohistochemical analysis.

Heat-induced epitope retrieval was performed using Tris-EDTA, pH 8.0.

Please note: All products are "FOR RESEARCH USE ONLY. NOT FOR USE IN DIAGNOSTIC PROCEDURES"

Our Abpromise to you: Quality guaranteed and expert technical support

- Replacement or refund for products not performing as stated on the datasheet
- Valid for 12 months from date of delivery
- Response to your inquiry within 24 hours

- We provide support in Chinese, English, French, German, Japanese and Spanish
- Extensive multi-media technical resources to help you
- We investigate all quality concerns to ensure our products perform to the highest standards

If the product does not perform as described on this datasheet, we will offer a refund or replacement. For full details of the Abpromise, please visit <https://www.abcam.com/abpromise> or contact our technical team.

Terms and conditions

- Guarantee only valid for products bought direct from Abcam or one of our authorized distributors