

## Product datasheet

# Anti-MCM5 antibody [EP2683Y] ab75975

Recombinant RabMAb

★★★★★ 1 Abreviews 4 References 10 Images

### Overview

<b>Product name</b>	Anti-MCM5 antibody [EP2683Y]
<b>Description</b>	Rabbit monoclonal [EP2683Y] to MCM5
<b>Host species</b>	Rabbit
<b>Tested applications</b>	<b>Suitable for:</b> WB, IP, IHC-P, Flow Cyt, ICC/IF
<b>Species reactivity</b>	<b>Reacts with:</b> Mouse, Human
<b>Immunogen</b>	Synthetic peptide within Human MCM5 aa 650 to the C-terminus (C terminal). The exact sequence is proprietary. Database link: <a href="#">P33992</a>
<b>Positive control</b>	HeLa and MCF7 cell lysates; human squamous cell cervical carcinoma tissue; HeLa cells.
<b>General notes</b>	Rat: We have preliminary internal testing data to indicate this antibody may not react with these species. Please contact us for more information.  Our RabMAb <sup>®</sup> technology is a patented hybridoma-based technology for making rabbit monoclonal antibodies. For details on our patents, please refer to <a href="#">RabMAb<sup>®</sup> patents</a> .  This product is a <a href="#">recombinant rabbit monoclonal antibody</a> .

### Properties

<b>Form</b>	Liquid
<b>Storage instructions</b>	Shipped at 4°C. Upon delivery aliquot and store at -20°C. Avoid freeze / thaw cycles.
<b>Storage buffer</b>	pH: 7.20 Preservative: 0.05% Sodium azide Constituents: 0.1% BSA, 40% Glycerol, 9.85% Tris glycine, 50% Tissue culture supernatant
<b>Purity</b>	Tissue culture supernatant
<b>Clonality</b>	Monoclonal
<b>Clone number</b>	EP2683Y
<b>Isotype</b>	IgG

### Applications

Our [Abpromise guarantee](#) covers the use of **ab75975** in the following tested applications.

The application notes include recommended starting dilutions; optimal dilutions/concentrations should be determined by the end user.

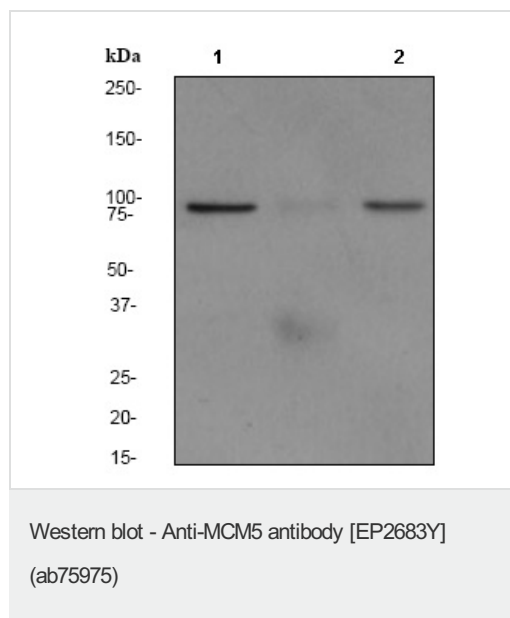
Application	Abreviews	Notes
WB		1/1000 - 1/10000. Detects a band of approximately 82 kDa (predicted molecular weight: 82 kDa).
IP		1/50.
IHC-P		1/250 - 1/500. Perform heat mediated antigen retrieval before commencing with IHC staining protocol.
Flow Cyt		1/40. <a href="#">ab172730</a> - Rabbit monoclonal IgG, is suitable for use as an isotype control with this antibody.
ICC/IF	★★★★★	1/100 - 1/250.

## Target

**Sequence similarities** Belongs to the MCM family.  
Contains 1 MCM domain.

**Cellular localization** Nucleus.

## Images



**All lanes** : Anti-MCM5 antibody [EP2683Y] (ab75975) at 1/10000 dilution

**Lane 1** : HeLa lysate

**Lane 2** : MCF7 cell lysate

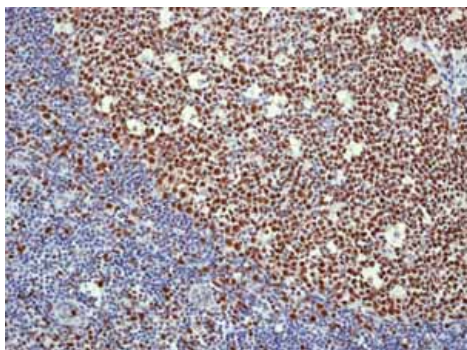
Lysates/proteins at 10 µg per lane.

### Secondary

**All lanes** : goat anti-rabbit HRP at 1/2000 dilution

**Predicted band size:** 82 kDa

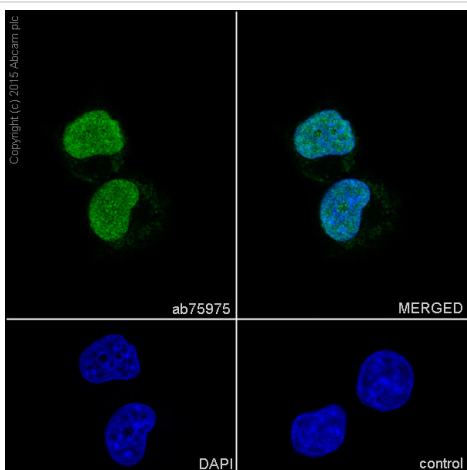
**Observed band size:** 82 kDa



Immunohistochemistry (Formalin/PFA-fixed paraffin-embedded sections) - Anti-MCM5 antibody [EP2683Y] (ab75975)

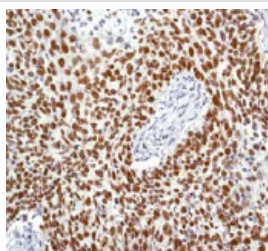
ab75975 showing positive staining in Normal tonsil tissue.

Perform heat mediated antigen retrieval before commencing with IHC staining protocol.



Immunocytochemistry/ Immunofluorescence - Anti-MCM5 antibody [EP2683Y] (ab75975)

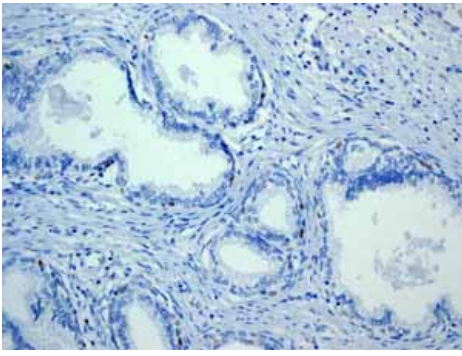
Immunofluorescence staining of MCF7 cells with purified ab75975 at a working dilution of 1/500, counter-stained with DAPI. The secondary antibody was an Alexa Fluor<sup>®</sup> 488 conjugated goat anti-rabbit (ab150077), used at a dilution of 1/1000. The cells were fixed in 4% PFA and permeabilized using 0.1% Triton X 100. The negative control is shown in bottom right hand panel - for the negative control, PBS was used instead of the primary antibody.



Immunohistochemistry (Formalin/PFA-fixed paraffin-embedded sections) - Anti-MCM5 antibody [EP2683Y] (ab75975)

ab75975 at 1/250 dilution staining MCM5 in human squamous cell cervical carcinoma by Immunohistochemistry, Paraffin-embedded tissue.

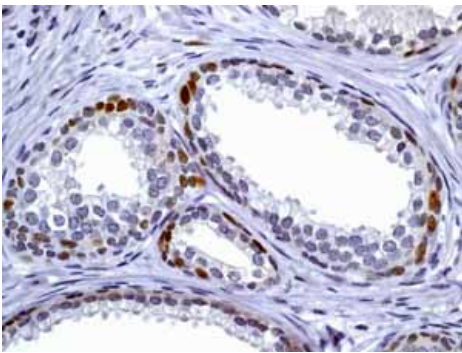
Perform heat mediated antigen retrieval before commencing with IHC staining protocol.



Immunohistochemistry (Formalin/PFA-fixed paraffin-embedded sections) - Anti-MCM5 antibody [EP2683Y] (ab75975)

ab75975 showing negative staining in human Normal prostate tissue.

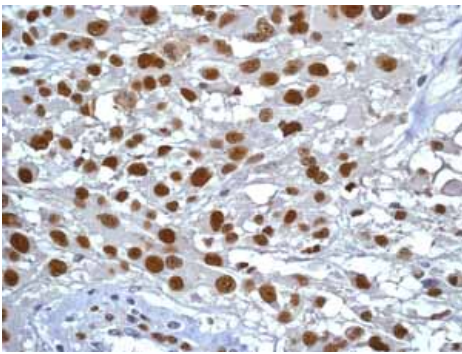
Perform heat mediated antigen retrieval before commencing with IHC staining protocol.



Immunohistochemistry (Formalin/PFA-fixed paraffin-embedded sections) - Anti-MCM5 antibody [EP2683Y] (ab75975)

ab75975 showing positive staining in human Prostatic carcinoma tissue.

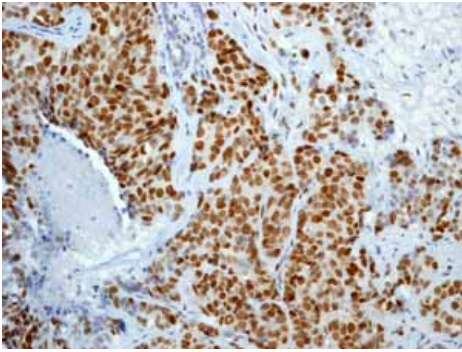
Perform heat mediated antigen retrieval before commencing with IHC staining protocol.



Immunohistochemistry (Formalin/PFA-fixed paraffin-embedded sections) - Anti-MCM5 antibody [EP2683Y] (ab75975)

ab75975 showing positive staining in human Glioma tissue.

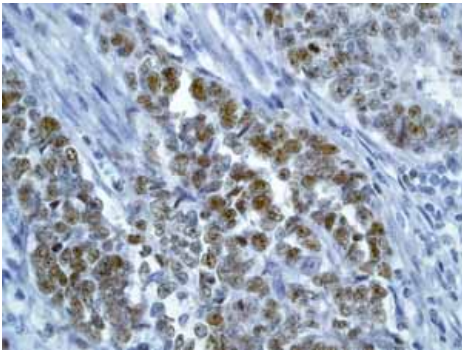
Perform heat mediated antigen retrieval before commencing with IHC staining protocol.



Immunohistochemistry (Formalin/PFA-fixed paraffin-embedded sections) - Anti-MCM5 antibody [EP2683Y] (ab75975)

ab75975 showing positive staining in human Breast carcinoma tissue.

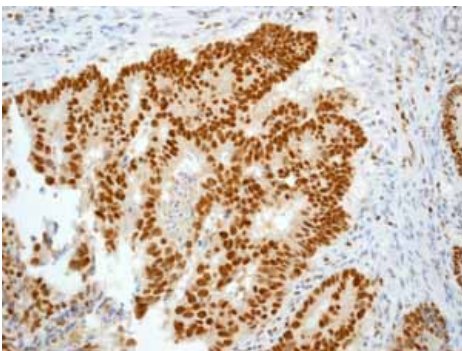
Perform heat mediated antigen retrieval before commencing with IHC staining protocol.



Immunohistochemistry (Formalin/PFA-fixed paraffin-embedded sections) - Anti-MCM5 antibody [EP2683Y] (ab75975)

ab75975 showing positive staining in human Endometrial carcinoma tissue.

Perform heat mediated antigen retrieval before commencing with IHC staining protocol.



Immunohistochemistry (Formalin/PFA-fixed paraffin-embedded sections) - Anti-MCM5 antibody [EP2683Y] (ab75975)

ab75975 showing positive staining in human Colonic adenocarcinoma tissue.

Perform heat mediated antigen retrieval before commencing with IHC staining protocol.

**Please note:** All products are "FOR RESEARCH USE ONLY. NOT FOR USE IN DIAGNOSTIC PROCEDURES"

### **Our Abpromise to you: Quality guaranteed and expert technical support**

---

- Replacement or refund for products not performing as stated on the datasheet
- Valid for 12 months from date of delivery
- Response to your inquiry within 24 hours
  
- We provide support in Chinese, English, French, German, Japanese and Spanish
- Extensive multi-media technical resources to help you
- We investigate all quality concerns to ensure our products perform to the highest standards

If the product does not perform as described on this datasheet, we will offer a refund or replacement. For full details of the Abpromise, please visit <https://www.abcam.com/abpromise> or contact our technical team.

### **Terms and conditions**

---

- Guarantee only valid for products bought direct from Abcam or one of our authorized distributors