


Product datasheet

Anti-MCPIP1 antibody ab70681

1 Image

Overview

---

<b>Product name</b>	Anti-MCPIP1 antibody
<b>Description</b>	Rabbit polyclonal to MCPIP1
<b>Host species</b>	Rabbit
<b>Tested applications</b>	<b>Suitable for:</b> WB
<b>Species reactivity</b>	<b>Reacts with:</b> Human <b>Predicted to work with:</b> Chimpanzee, Macaque monkey, Gorilla, Orangutan 
<b>Immunogen</b>	Synthetic peptide corresponding to Human MCPIP1 aa 400-500 conjugated to keyhole limpet haemocyanin. Database link: <a href="#">Q5D1E8</a>
<b>Positive control</b>	This antibody gave a positive signal in the following Human tissue lysates: Heart; Spleen; Lung.
<b>General notes</b>	<p>Reproducibility is key to advancing scientific discovery and accelerating scientists' next breakthrough.</p> <p>Abcam is leading the way with our range of recombinant antibodies, knockout-validated antibodies and knockout cell lines, all of which support improved reproducibility.</p> <p>We are also planning to innovate the way in which we present recommended applications and species on our product datasheets, so that only applications &amp; species that have been tested in our own labs, our suppliers or by selected trusted collaborators are covered by our Abpromise™ guarantee.</p> <p>In preparation for this, we have started to update the applications &amp; species that this product is Abpromise guaranteed for.</p> <p>We are also updating the applications &amp; species that this product has been “predicted to work with,” however this information is not covered by our Abpromise guarantee.</p> <p>Applications &amp; species from publications and Abreviews that have not been tested in our own labs or in those of our suppliers are not covered by the Abpromise guarantee.</p> <p>Please check that this product meets your needs before purchasing. If you have any questions, special requirements or concerns, please send us an inquiry and/or contact our Support team ahead of purchase. Recommended alternatives for this product can be found below, as well as customer reviews and Q&amp;As.</p>

Properties

---

<b>Form</b>	Liquid
<b>Storage instructions</b>	Shipped at 4°C. Store at +4°C short term (1-2 weeks). Upon delivery aliquot. Store at -20°C or -80°C. Avoid freeze / thaw cycle.
<b>Storage buffer</b>	pH: 7.40 Preservative: 0.02% Sodium azide Constituent: PBS
	Batches of this product that have a concentration < 1mg/ml may have BSA added as a stabilising agent. If you would like information about the formulation of a specific lot, please contact our scientific support team who will be happy to help.
<b>Purity</b>	Immunogen affinity purified
<b>Clonality</b>	Polyclonal
<b>Isotype</b>	IgG

## Applications

Our [Abpromise guarantee](#) covers the use of **ab70681** in the following tested applications.

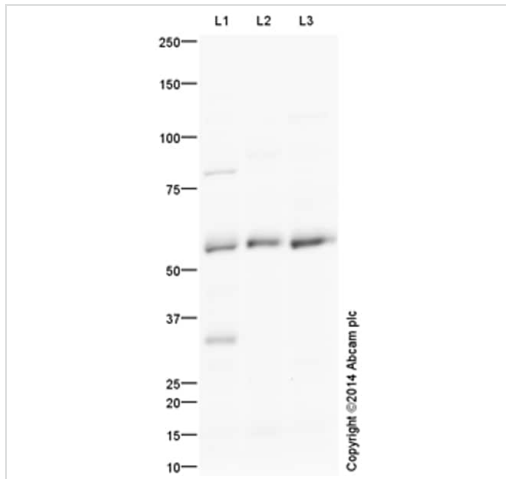
The application notes include recommended starting dilutions; optimal dilutions/concentrations should be determined by the end user.

Application	Abreviews	Notes
WB		Use a concentration of 1 µg/ml. Detects a band of approximately 65 kDa (predicted molecular weight: 65 kDa).

## Target

<b>Function</b>	Has RNase activity and selectively degrades specific target mRNA species. Modulates the immune response and inflammation by regulating the decay of specific mRNA molecules. Recognizes the 3'-untranslated region (UTR) of the mRNA for IL6, CALCR and IL12B. Required for normal decay of IL6 mRNA (By similarity). Triggers apoptosis and promotes angiogenesis in response to the binding of CCL2 to CCR2. Regulates expression of CDH12 and CHD19.
<b>Sequence similarities</b>	Belongs to the ZC3H12 family. Contains 1 C3H1-type zinc finger.
<b>Cellular localization</b>	Cytoplasm. Nucleus.

## Images



Western blot - Anti-MCPIP1 antibody (ab70681)

**All lanes :** Anti-MCPIP1 antibody (ab70681) at 1 µg/ml

**Lane 1 :** Human heart tissue lysate - total protein (ab29431)

**Lane 2 :** Human spleen tissue lysate - total protein (ab29699)

**Lane 3 :** Lung (Human) Tissue Lysate (ab4014)

Lysates/proteins at 20 µg per lane.

### Secondary

**All lanes :** Goat Anti-Rabbit IgG H&L (HRP) (ab97051) at 1/50000 dilution

Developed using the ECL technique.

Performed under reducing conditions.

**Predicted band size:** 65 kDa

**Observed band size:** 60 kDa

[why is the actual band size different from the predicted?](#)

**Additional bands at:** 33 kDa (possible non-specific binding), 80 kDa (possible non-specific binding)

**Exposure time:** 2 minutes

This blot was produced using a 4-12% Bis-tris gel under the MOPS buffer system. The gel was run at 200V for 50 minutes before being transferred onto a Nitrocellulose membrane at 30V for 70 minutes. The membrane was then blocked for an hour using 2% Bovine Serum Albumin before being incubated with ab70681 overnight at 4°C. Antibody binding was detected using an anti-rabbit antibody conjugated to HRP, and visualised using ECL development solution.

## **Our Abpromise to you: Quality guaranteed and expert technical support**

---

- Replacement or refund for products not performing as stated on the datasheet
- Valid for 12 months from date of delivery
- Response to your inquiry within 24 hours
  
- We provide support in Chinese, English, French, German, Japanese and Spanish
- Extensive multi-media technical resources to help you
- We investigate all quality concerns to ensure our products perform to the highest standards

If the product does not perform as described on this datasheet, we will offer a refund or replacement. For full details of the Abpromise, please visit <https://www.abcam.com/abpromise> or contact our technical team.

## **Terms and conditions**

---

- Guarantee only valid for products bought direct from Abcam or one of our authorized distributors