




Product datasheet

Anti-CSF-1-R antibody ab223642

1 Image

Overview

Product name	Anti-CSF-1-R antibody
Description	Goat polyclonal to CSF-1-R
Host species	Goat
Tested applications	Suitable for: WB
Species reactivity	Reacts with: Human Predicted to work with: Mouse, Rat, Cat 
Immunogen	Synthetic peptide corresponding to Human CSF-1-R aa 700-710 (internal sequence) (Cysteine residue). (NP_005202.2). Sequence: C-KNIHLEKKYVR Database link: P07333  Run BLAST with  Run BLAST with
Positive control	WB: HEK-293 lysate overexpressing human CSF-1-R with C-terminal MYC tag.

Properties

Form	Liquid
Storage instructions	Shipped at 4°C. Store at +4°C short term (1-2 weeks). Upon delivery aliquot. Store at -20°C long term. Avoid freeze / thaw cycle.
Storage buffer	pH: 7.30 Preservative: 0.02% Sodium azide Constituents: 0.5% BSA, Tris buffered saline
Purity	Immunogen affinity purified
Purification notes	ab223642 was purified from goat serum by ammonium sulphate precipitation followed by antigen affinity chromatography using the immunizing peptide.
Clonality	Polyclonal
Isotype	IgG

Applications

Our [Abpromise guarantee](#) covers the use of **ab223642** in the following tested applications.

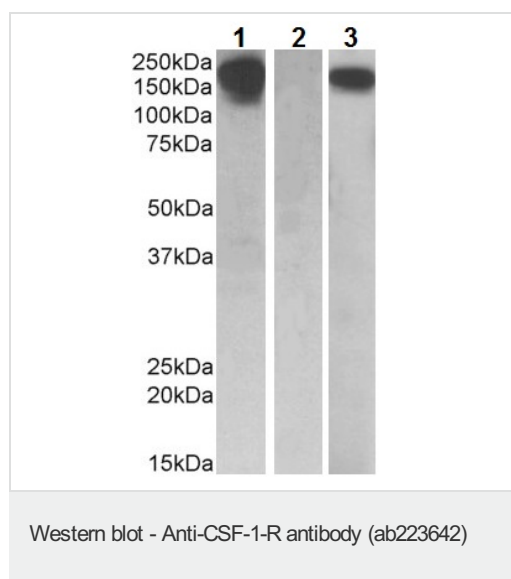
The application notes include recommended starting dilutions; optimal dilutions/concentrations should be determined by the end user.

Application	Abreviews	Notes
WB		Use a concentration of 0.1 - 0.5 µg/ml. Predicted molecular weight: 108 kDa.

Target

Function	Protein tyrosine-kinase transmembrane receptor for CSF1 and IL34.
Tissue specificity	Expressed in bone marrow and in differentiated blood mononuclear cells.
Sequence similarities	Belongs to the protein kinase superfamily. Tyr protein kinase family. CSF-1/PDGF receptor subfamily. Contains 5 Ig-like C2-type (immunoglobulin-like) domains. Contains 1 protein kinase domain.
Cellular localization	Membrane.

Images



Lane 1 : Anti-CSF-1-R antibody (ab223642) at 0.5 µg/ml

Lane 2 : Anti-CSF-1-R antibody (ab223642) at 1 mg/ml

Lane 3 : Anti-MYC tag at 1/1000 dilution

Lanes 1 & 3 : HEK-293 (human epithelial cell line from embryonic kidney) lysate overexpressing human CSF-1-R with C-terminal MYC tag (in RIPA buffer)

Lane 2 : Mock transfected HEK-293 (human epithelial cell line from embryonic kidney) lysate (in RIPA buffer)

Lysates/proteins at 10 µg per lane.

Developed using the ECL technique.

Predicted band size: 108 kDa

Observed band size: 200 kDa

[why is the actual band size different from the predicted?](#)

Primary incubations were for 1 hour.

Please note: All products are "FOR RESEARCH USE ONLY. NOT FOR USE IN DIAGNOSTIC PROCEDURES"

Our Abpromise to you: Quality guaranteed and expert technical support

- Replacement or refund for products not performing as stated on the datasheet
- Valid for 12 months from date of delivery
- Response to your inquiry within 24 hours

- We provide support in Chinese, English, French, German, Japanese and Spanish
- Extensive multi-media technical resources to help you
- We investigate all quality concerns to ensure our products perform to the highest standards

If the product does not perform as described on this datasheet, we will offer a refund or replacement. For full details of the Abpromise, please visit <https://www.abcam.com/abpromise> or contact our technical team.

Terms and conditions

- Guarantee only valid for products bought direct from Abcam or one of our authorized distributors